

# Component Procedures: Power Steering Pump

## Table of Contents

1. Parts and Labor (itype\_189)
2. Components (itype\_392)
3. Power Steering Pump Flow Control Valve Replacement (Article 2044549)
4. Power Steering Pump Initial Operation (Article 2029535)
5. Power Steering Pump Pulley Replacement (Article 2044550)
6. Power Steering Pump Removal and Installation (Article 2044551)
7. Power Steering Pump (Article 2048106)
8. Pressure, Vacuum and Temperature (itype\_29)
9. All Technical Service Bulletins (itype\_100)
10. Repair Tips (itype\_110)
11. Leakage Diagnosis (Article 2044535)
12. Power Steering System Analyzer 6815 (Article 2044504)
13. Power Steering Flow/Pressure Tester Adapters 6893 (Article 2044505)
14. Power Steering Pump Pulley Puller C-4333 (Article 2044506)
15. Power Steering Pump Pulley Installer C-4063B (Article 2044507)

# Component Procedures: Power Steering Pump

## Parts and Labor (itype\_189)

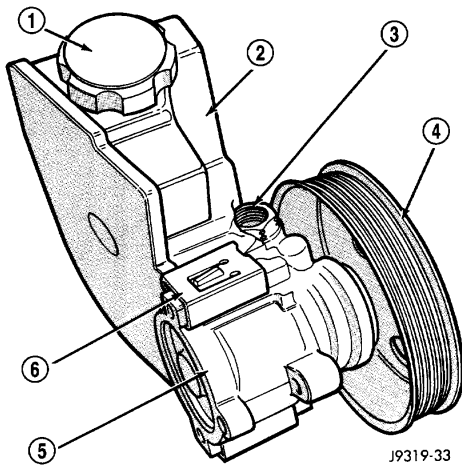
### Parts

Qualifier	Part #	Name	Price	Note
Power > P/S Pump	52088018	P/s Pump	0.00	Order By Description.

### Labor

Operation	Qualifier Path	Skill	Std Hrs	Wty Hrs
Replace	P/s Pump, R&R	B	1.6	1.1

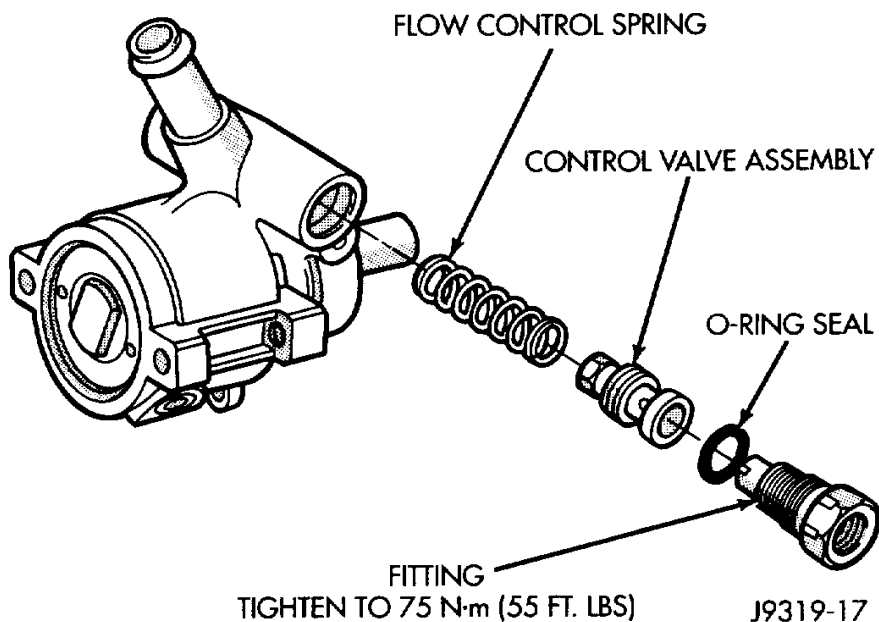
## Components (itype\_392)



**Fig. 1 Pump With Integral Reservoir**

- 1 - CAP
- 2 - FLUID RESERVOIR (TYPICAL)
- 3 - HIGH-PRESSURE FITTING
- 4 - DRIVE PULLEY
- 5 - PUMP BODY
- 6 - RESERVOIR CLIP

## Power Steering Pump Flow Control Valve Replacement (Article 2044549)



## Power Steering Pump Initial Operation (Article 2029535)

WARNING: THE FLUID LEVEL SHOULD BE CHECKED WITH ENGINE OFF TO PREVENT INJURY FROM MOVING COMPONENTS.

CAUTION:

Use MOPAR

Power Steering Fluid

or equivalent. Do not use automatic transmission fluid and do not overfill.

Wipe filler cap clean, then check the fluid level. The dipstick should indicate COLD when the fluid is at normal temperature.

1. Fill the pump

fluid reservoir

to the proper level and let the fluid settle for at least two minutes.

2. Start the engine and let run for a few seconds then turn engine off.

3. Add fluid if necessary. Repeat the above procedure until the fluid level remains constant after running the engine.

4. Raise the front

wheels

off the ground.

5. Slowly turn the

steering wheel

right and left, lightly contacting the

wheel

stops at least 20 times.

6. Check the fluid level add if necessary.

7. Lower the vehicle, start the engine and turn the

steering

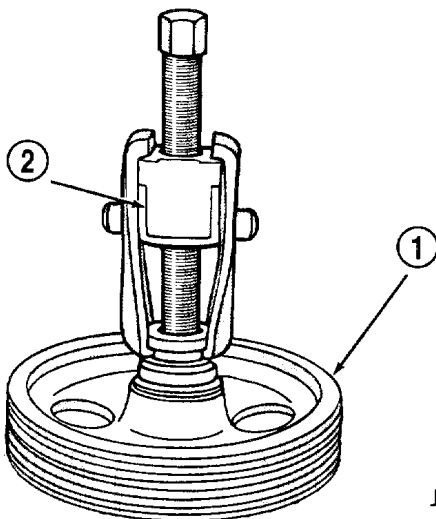
wheel slowly from lock to lock.

8. Stop the engine and check the fluid level and refill as required.

9. If the fluid is extremely foamy or milky looking, allow the vehicle to stand a few minutes and repeat the procedure.

Do not run a vehicle with foamy fluid for an extended period. This may cause pump damage.

## Power Steering Pump Pulley Replacement (Article 2044550)

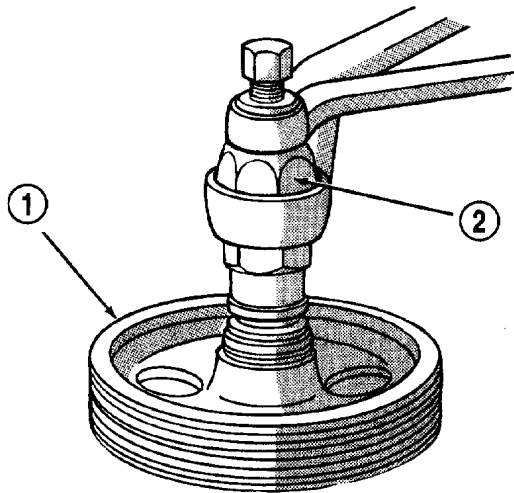


J9319-45

**Fig. 9 Pulley Removal**

1 – POWER STEERING PUMP DRIVE PULLEY

2 – SPECIAL TOOL C-4333

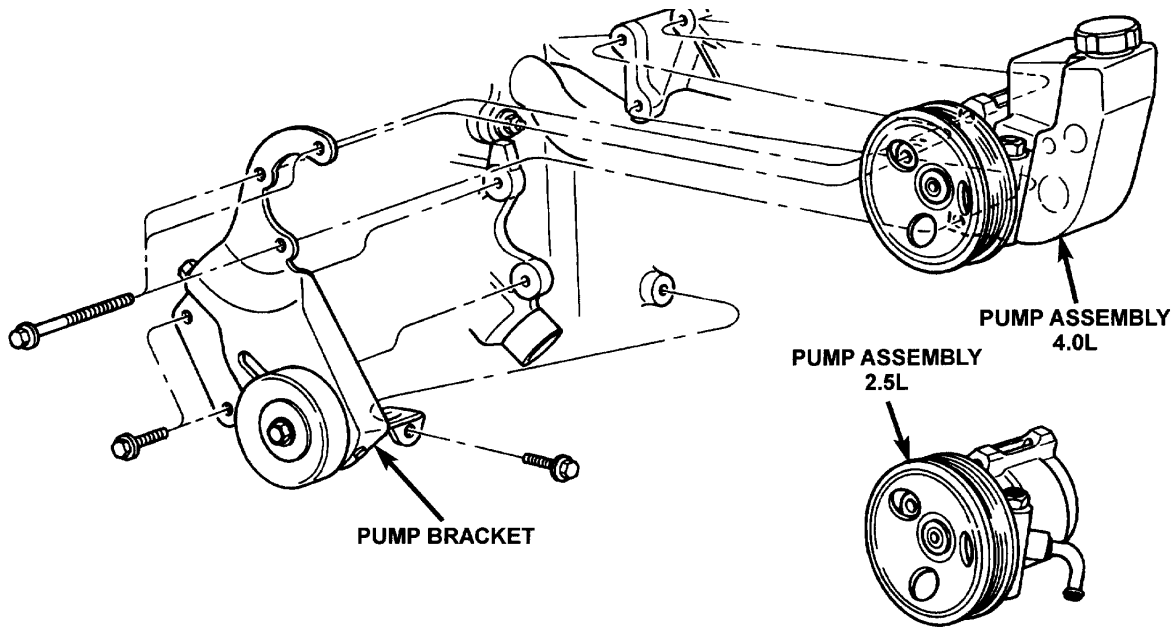


J9519-1

**Fig. 6 Pulley Installation**

- 1 - POWER STEERING PUMP DRIVE PULLEY
- 2 - SPECIAL TOOL C-4063-B

**Power Steering Pump Removal and Installation (Article 2044551)**



**Power Steering Pump (Article 2048106)**

- Power Steering Pump Pressure Hose Nut 38 ft.lb
- Power Steering Pump /Tensioner Bracket Bolts (To Intake) 21 ft.lb
- Bolts (To Water Pump) 35 ft.lb

**Pressure, Vacuum and Temperature (itype\_29)**

- Relief Pressure  $\pm$  50 ..... 9653 kPa (1400 psi)
- Flow Rate At 1500 RPM ..... 2.4 - 2.8 GPM

**All Technical Service Bulletins (itype\_100)**

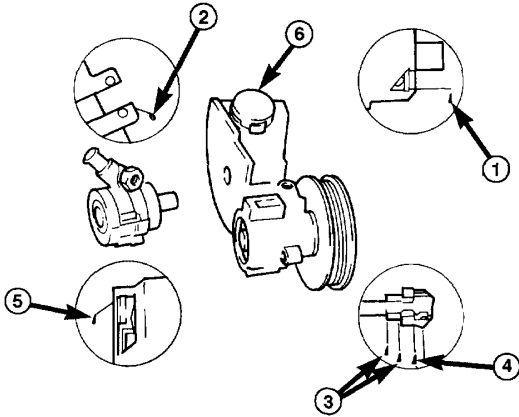
- Tsbs
- Steering - Power Steering Fluid Usage (19-005-03, 2003/08/29)

## Repair Tips (itype\_110)

Tsbs

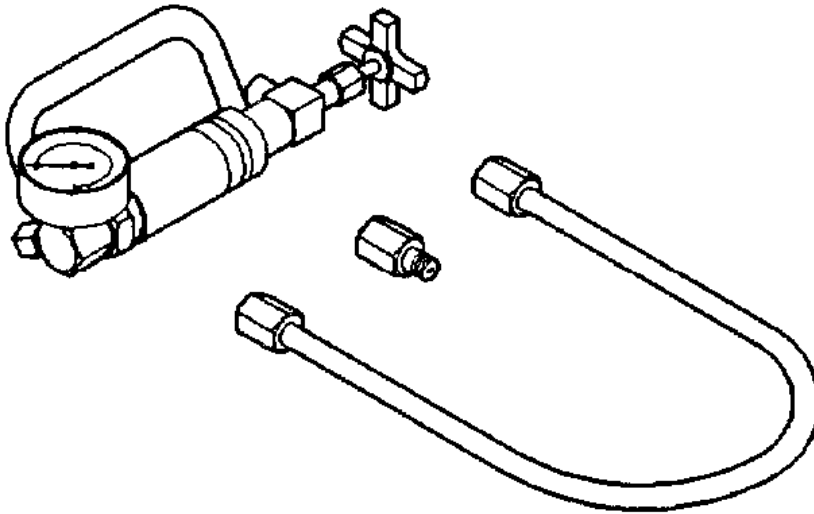
- Steering - Power Steering Fluid Usage (19-005-03, 2003/08/29)

### Leakage Diagnosis (Article 2044535)



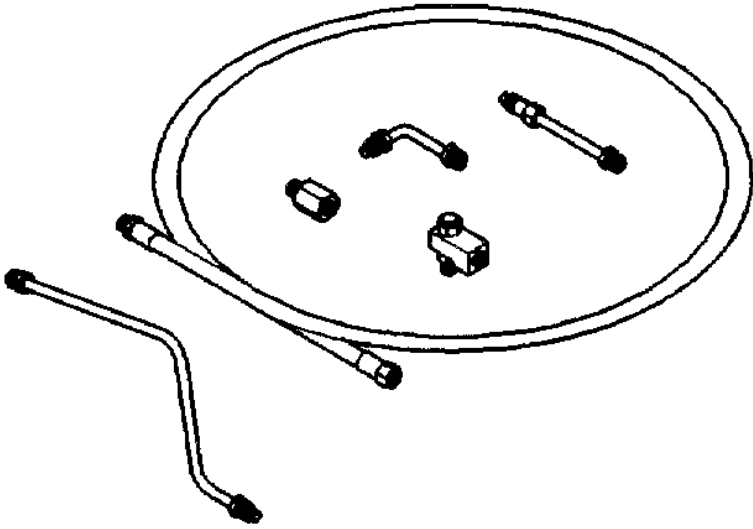
1. BUSHING (BEARING) WORN, SEAL WORN. REPLACE PUMP.
2. REPLACE RESERVOIR O-RING SEAL.
3. TORQUE HOSE FITTING NUT TO SPECIFICATIONS. IF LEAKAGE PERSISTS, REPLACE O-RING SEAL.
4. TORQUE FITTING TO SPECIFICATIONS. IF LEAKAGE PERSISTS, REPLACE O-RING SEAL.
5. REPLACE PUMP.
6. CHECK OIL LEVEL: IF LEAKAGE PERSISTS WITH THE LEVEL CORRECT AND CAP TIGHT, REPLACE THE CAP.

### Power Steering System Analyzer 6815 (Article 2044504)

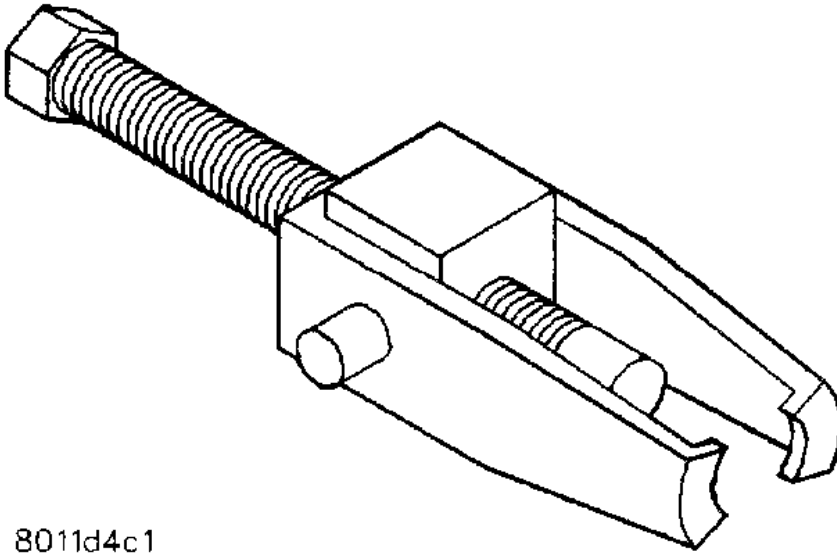


8011c958

### Power Steering Flow/Pressure Tester Adapters 6893 (Article 2044505)



**Power Steering Pump Pulley Puller C-4333 (Article 2044506)**



8011d4c1

**Power Steering Pump Pulley Installer C-4063B (Article 2044507)**

