

Component Procedures: Brake Shoe

Table of Contents

1. Parts and Labor (itype_189)
2. Procedures (itype_376)
3. Mechanical (including Torque) (itype_28)

Component Procedures: Brake Shoe

Parts and Labor (itype_189)

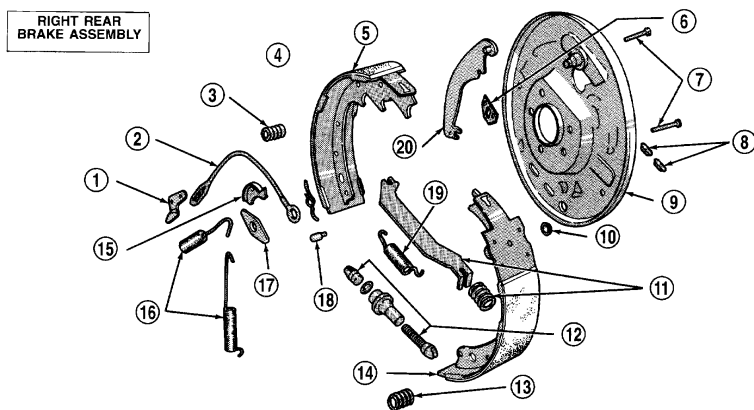
Parts

Qualifier	Part #	Name	Price	Note
Rear Shoes	4723367AB	Rear Shoes	138.00	

Labor

Operation	Qualifier Path	Skill	Std Hrs	Wty Hrs
Replace	Rear Shoes	B	1.1	0.7
Replace	Rear Shoes > NOTE > To Adjust Parking Brake, ?	B	0.3	0.0
Replace	Rear Shoes > NOTE > To Overhaul Wheel Cylinde?	B	0.1	0.0
Replace	Rear Shoes > NOTE > To R&R Brake Hose, Add > ?	B	0.1	0.0
Replace	Rear Shoes > NOTE > To R&R Rear Parking Brake?	B	0.3	0.0
Replace	Rear Shoes > NOTE > To R&R Wheel Cylinder, Ad?	B	0.1	0.0
Replace	Rear Shoes > NOTE > To Reface Drum, Add > Each	B	0.3	0.0

Procedures (itype_376)



J9005-13

Fig. 4 Brake Components

- | | |
|-----------------------------------|------------------------------------|
| 1 - ADJUSTER LEVER | 11 - PARK BRAKE STRUT AND SPRING |
| 2 - ADJUSTER CABLE | 12 - ADJUSTER SCREW ASSEMBLY |
| 3 - HOLDDOWN SPRING AND RETAINERS | 13 - HOLDDOWN SPRING AND RETAINERS |
| 4 - ADJUSTER LEVER SPRING | 14 - LEADING SHOE |
| 5 - TRAILING SHOE | 15 - CABLE GUIDE |
| 6 - CYLINDER-TO-SUPPORT SEAL | 16 - SHOE RETURN SPRINGS |
| 7 - HOLDDOWN PINS | 17 - SHOE GUIDE PLATE |
| 8 - ACCESS PLUGS | 18 - PIN |
| 9 - SUPPORT PLATE | 19 - SHOE SPRING |
| 10 - CABLE HOLE PLUG | 20 - PARK BRAKE LEVER |

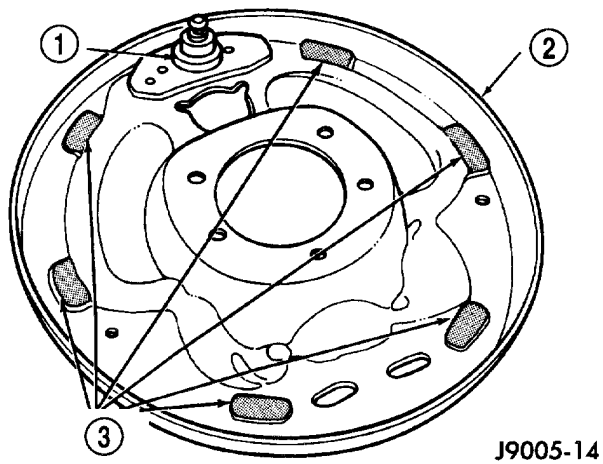


Fig. 35 Shoe Contact Surfaces

- 1 - ANCHOR PIN
- 2 - SUPPORT PLATE
- 3 - SHOE CONTACT SURFACES

Mechanical (including Torque) (itype_28)

As a general rule, riveted brake shoes should be replaced when worn to within 0.78 mm (1/32 inch) of the rivet heads. Bonded linings should be replaced when worn to a thickness of 1.6 mm (1/16 inch).