

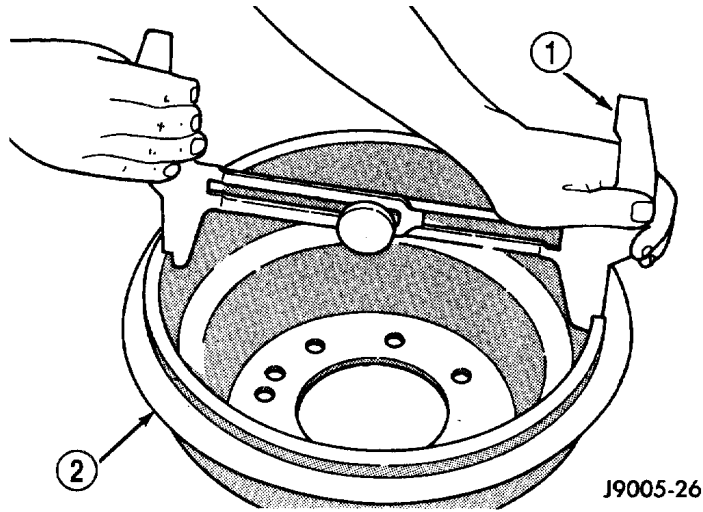
Component Procedures: Drum Brake System

Table of Contents

1. Adjustments (itype_5)
2. Components (itype_392)
3. Cleaning and Inspection (Article 2030359)

Component Procedures: Drum Brake System

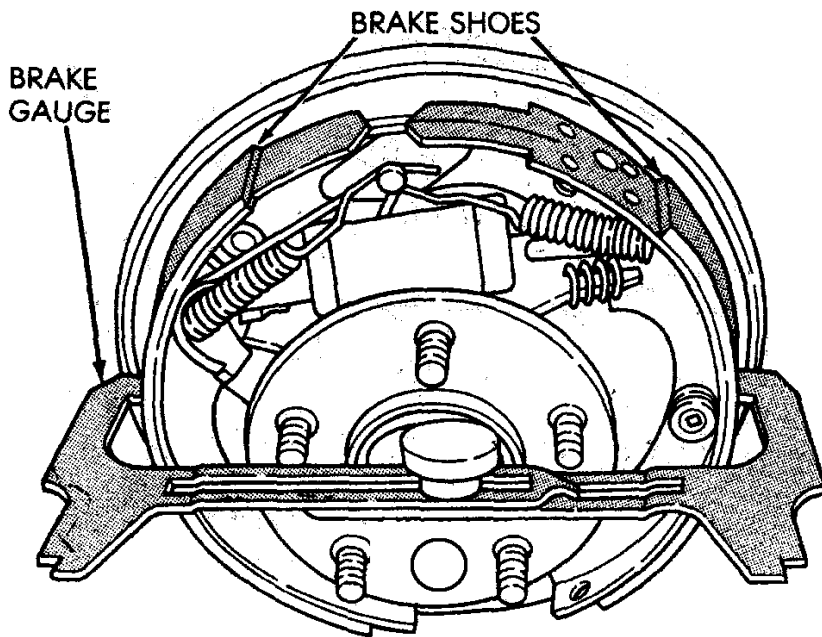
Adjustments (itype_5)

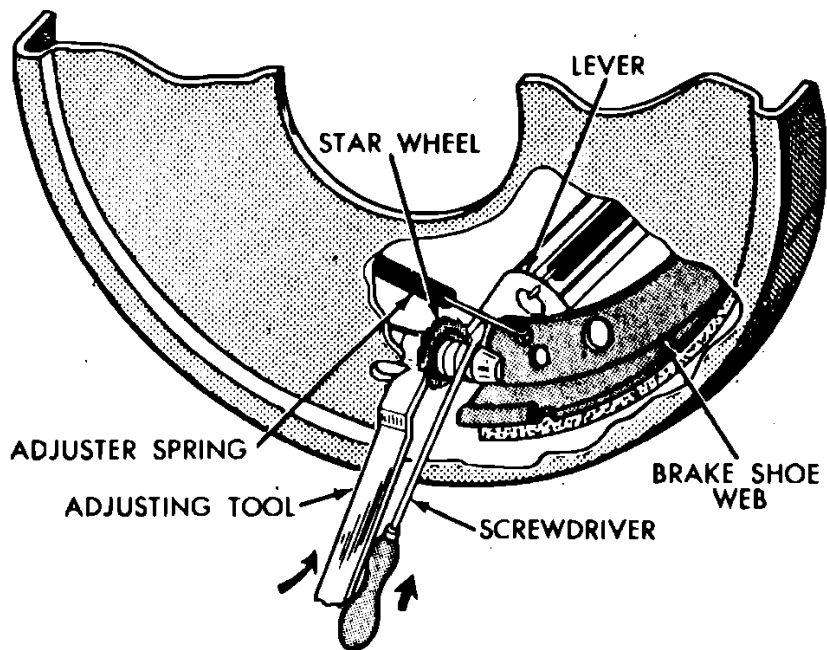


J9005-26

Fig. 58 Adjusting Gauge On Drum

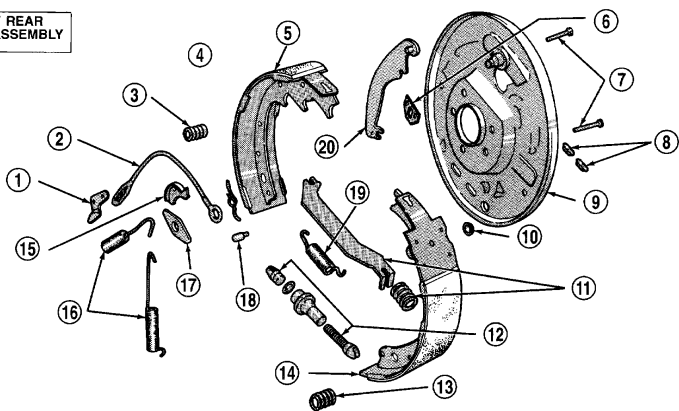
- 1 - BRAKE GAUGE
- 2 - BRAKE DRUM





Components (itype_392)

RIGHT REAR
BRAKE ASSEMBLY

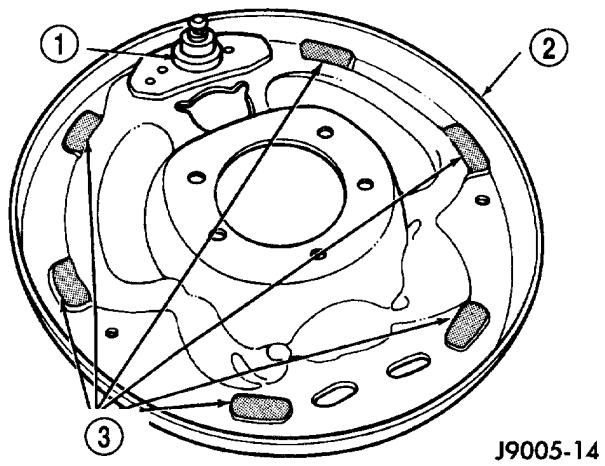


J9005-13

Fig. 4 Brake Components

- | | |
|-----------------------------------|------------------------------------|
| 1 - ADJUSTER LEVER | 11 - PARK BRAKE STRUT AND SPRING |
| 2 - ADJUSTER CABLE | 12 - ADJUSTER SCREW ASSEMBLY |
| 3 - HOLDDOWN SPRING AND RETAINERS | 13 - HOLDDOWN SPRING AND RETAINERS |
| 4 - ADJUSTER LEVER SPRING | 14 - LEADING SHOE |
| 5 - TRAILING SHOE | 15 - CABLE GUIDE |
| 6 - CYLINDER-TO-SUPPORT SEAL | 16 - SHOE RETURN SPRINGS |
| 7 - HOLDDOWN PINS | 17 - SHOE GUIDE PLATE |
| 8 - ACCESS PLUGS | 18 - PIN |
| 9 - SUPPORT PLATE | 19 - SHOE SPRING |
| 10 - CABLE HOLE PLUG | 20 - PARK BRAKE LEVER |

Cleaning and Inspection (Article 2030359)



J9005-14

Fig. 35 Shoe Contact Surfaces

- 1 - ANCHOR PIN
- 2 - SUPPORT PLATE
- 3 - SHOE CONTACT SURFACES