

Component Procedures: Leak Detection Pump

Table of Contents

1. Parts and Labor (itype_189)
2. Components (itype_392)
3. Connector Views (itype_47)
4. Components (itype_32)
5. Procedures (itype_376)
6. Mechanical (including Torque) (itype_28)
7. All Technical Service Bulletins (itype_100)
8. Repair Tips (itype_110)
9. Component Tests and General Diagnostics (itype_383)

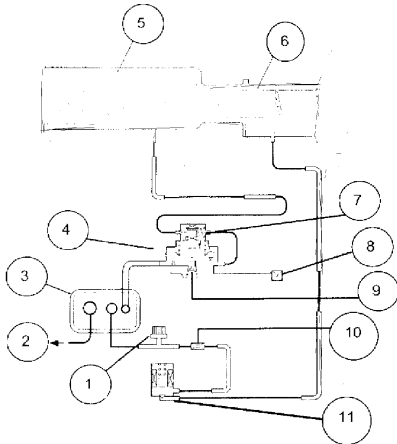
Component Procedures: Leak Detection Pump

Parts and Labor (itype_189)

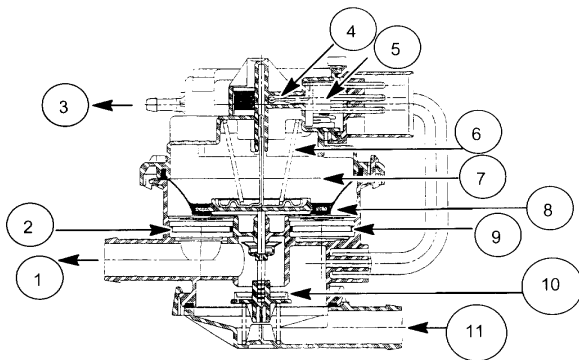
Labor

Operation	Qualifier Path	Skill	Std Hrs	Wty Hrs
Replace	Detection Pump, R&R	B	0.7	0.6

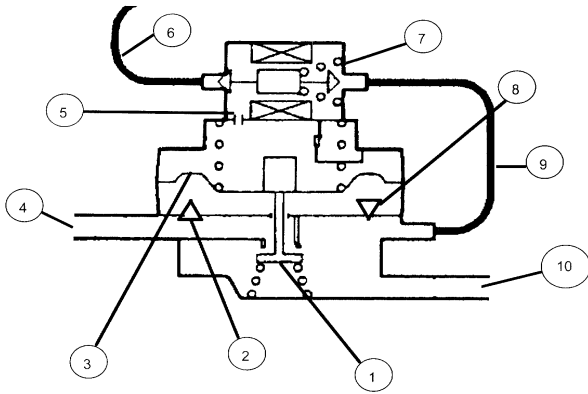
Components (itype_392)



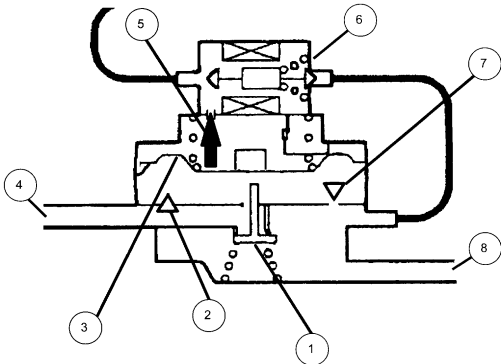
- 1-SERVICE PORT
- 2-TO FUEL TANK
- 3-EVAPORATIVE CANISTER
- 4-LEAK DETECTION PUMP (LDP)
- 5-INTAKE AIR PLENUM
- 6-THROTTLE BODY
- 7-LDP SOLENOID
- 8-EVAPORATIVE SYSTEM AIR FILTER
- 9-LDP VENT VALVE
- 10-EVAPORATIVE PURGE ORIFICE (model specific)
- 11-EVAPORATIVE PURGE SOLENOID



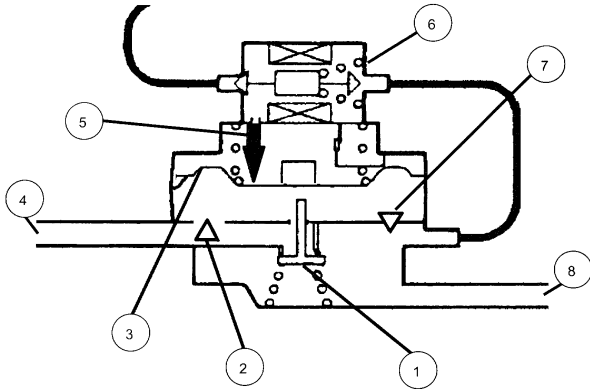
- 1-TO CANISTER
- 2-ONE-WAY CHECK VALVE (OUTLET)
- 3-VACUUM FROM INTAKE MANIFOLD
- 4-REED SWITCH
- 5-PRESSURE/VACUUM SOLENOID
- 6-DIAPHRAGM SPRING
- 7-PUMP CAVITY
- 8-DIAPHRAGM
- 9-ONE-WAY CHECK VALVE (INLET)
- 10-VENT VALVE
- 11-TO AIR FILTER



- 1-VENT VALVE (PUSHED OPEN BY DIAPHRAGM)
- 2-OUTLET CHECK VALVE (CLOSED)
- 3-DIAPHRAGM (FULLY DOWN/PUSHES VENT VALVE OPEN)
- 4-TO CANISTER
- 5-DIAPHRAGM PORT TO SOLENOID
- 6-VACUUM LINE
- 7-SOLENOID (CLOSES VACUUM PORT/OPENS ATMOSPHERIC PORT TO FILTER)
- 8-INLET CHECK VALVE (CLOSED)
- 9-ATMOSPHERIC PRESSURE LINE
- 10-TO AIR FILTER (ATMOSPHERIC PRESSURE)

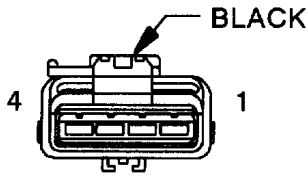


- 1-VENT VALVE (CLOSED BY UPWARD MOVEMENT OF DIAPHRAGM)
- 2-OUTLET CHECK VALVE (CLOSED)
- 3-DIAPHRAGM (MOVES UPWARD/CLOSES VENT VALVE)
- 4-TO CANISTER
- 5-VACUUM ABOVE DIAPHRAGM (MOVES DIAPHRAGM UPWARD)
- 6-SOLENOID (OPENS VACUUM PORT TO DIAPHRAGM/CLOSES ATMOSPHERIC PORT TO FILTER)
- 7-INLET CHECK VALVE (OPEN)
- 8-TO AIR FILTER



- 1-VENT VALVE (CLOSED)
- 2-OUTLET CHECK VALVE OPEN
- 3-DIAPHRAGM (MOVING DOWNWARD BY SPRING PRESSURE - VACUUM BLOCKED)
- 4-TO CANISTER
- 5-ATMOSPHERIC PRESSURE ABOVE DIAPHRAGM (SPRING PUSHES DIAPHRAGM DOWNWARD)
- 6-SOLENOID (CLOSES VACUUM PORT/OPENS ATMOSPHERIC PORT TO FILTER)
- 7-INLET CHECK VALVE (CLOSED)
- 8-FROM AIR FILTER

Connector Views (itype_47)

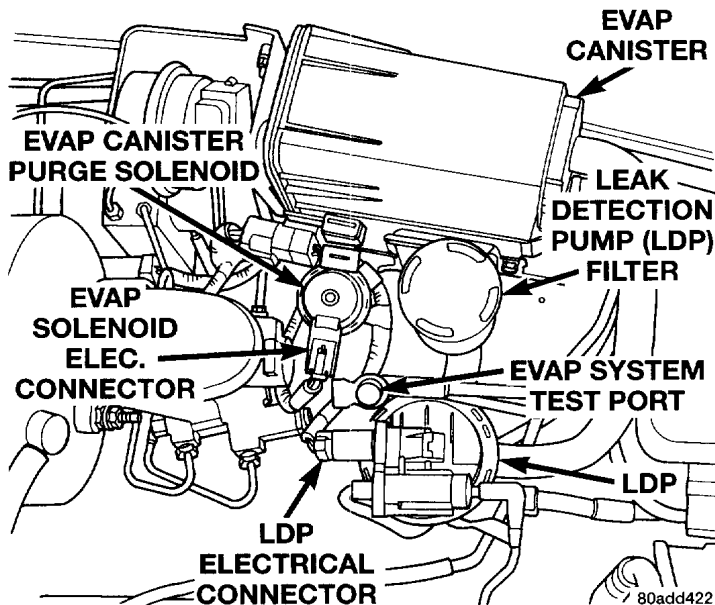


**LEAK
DETECTION PUMP**

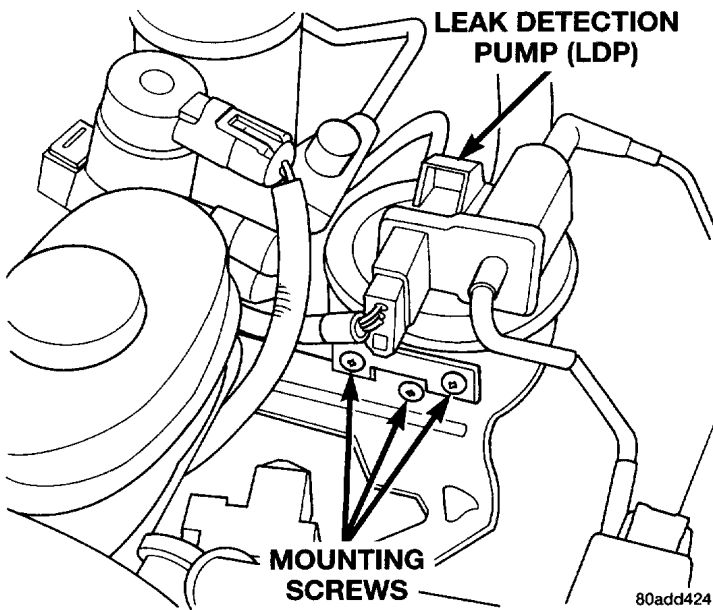
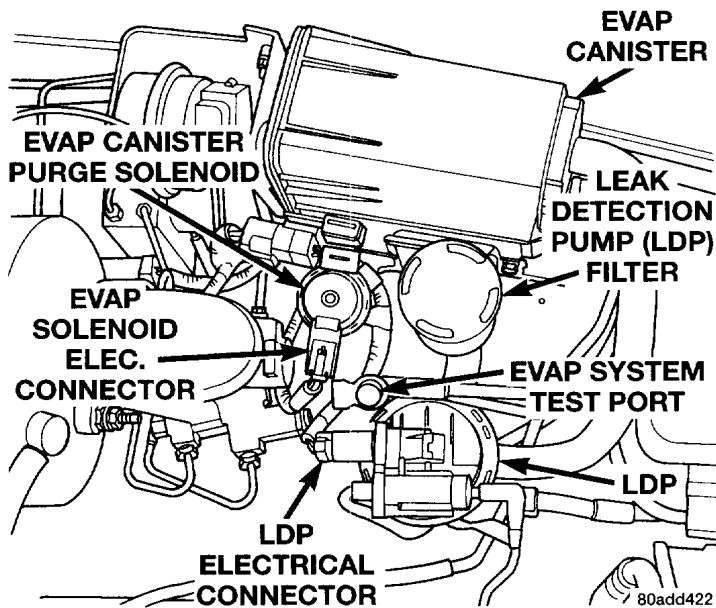
LEAK DETECTION PUMP - BLACK 4 WAY

CAV	CIRCUIT	FUNCTION
1	-	-
2	F142 200R/DG	FUSED AUTOMATIC SHUTDOWN RELAY OUTPUT
3	K106 20WT/DG	LEAK DETECTION PUMP SOLENOID CONTROL
4	K105 20WT/OR	LEAK DETECTION PUMP SWITCH SENSE

Components (itype_32)



Procedures (itype_376)



Mechanical (including Torque) (itype_28)

LDP Filter Mounting Bracket Bolt 7 Nm
LDP Filter Mounting Bracket Screws 1 Nm

All Technical Service Bulletins (itype_100)

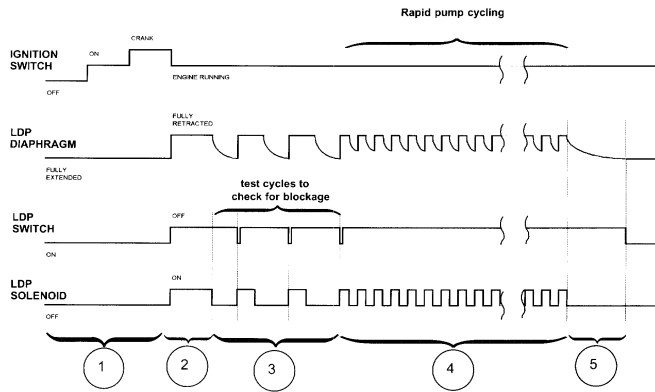
Tsbs
- EVAP System - Leak Detection Pump Misdiagnosis (18-01-00, 2000/02/04)

Repair Tips (itype_110)

Tsbs
- EVAP System - Leak Detection Pump Misdiagnosis (18-01-00, 2000/02/04)

Component Tests and General Diagnostics (itype_383)

EVAP LEAK DETECTION TEST SEQUENCE



- 1-P1495 LEAK DETECTION PUMP SOLENOID CIRCUIT can set (key "ON")
- 2-P1494 LEAK DETECTION PUMP SW OR MECH FAULT can set
- 3-P1486 EVAP LEAK MON PINCHED HOSE FOUND can set
- 4-No DTC can set during this time
- 5-P0456 EVAP LEAK MONITOR 0.020 LEAK DETECTED/P0442 - EVAP LEAK MONITOR 0.040 LEAK DETECTED/P0455 - EVAP LEAK MONITOR LARGE LEAK DETECTED can set - times will vary