

Component Procedures: Intake Manifold

Table of Contents

1. Parts and Labor (itype_189)
2. Components (itype_32)
3. Removal and Replacement (itype_401)
4. All Technical Service Bulletins (itype_100)
5. Customer Interest Bulletins (itype_109)
6. New / Updated Parts (itype_117)

Component Procedures: Intake Manifold

Parts and Labor (itype_189)

Parts

Qualifier	Part #	Name	Price	Note
Intake Manifold	L37313100D	Intake Manifold	581.41	

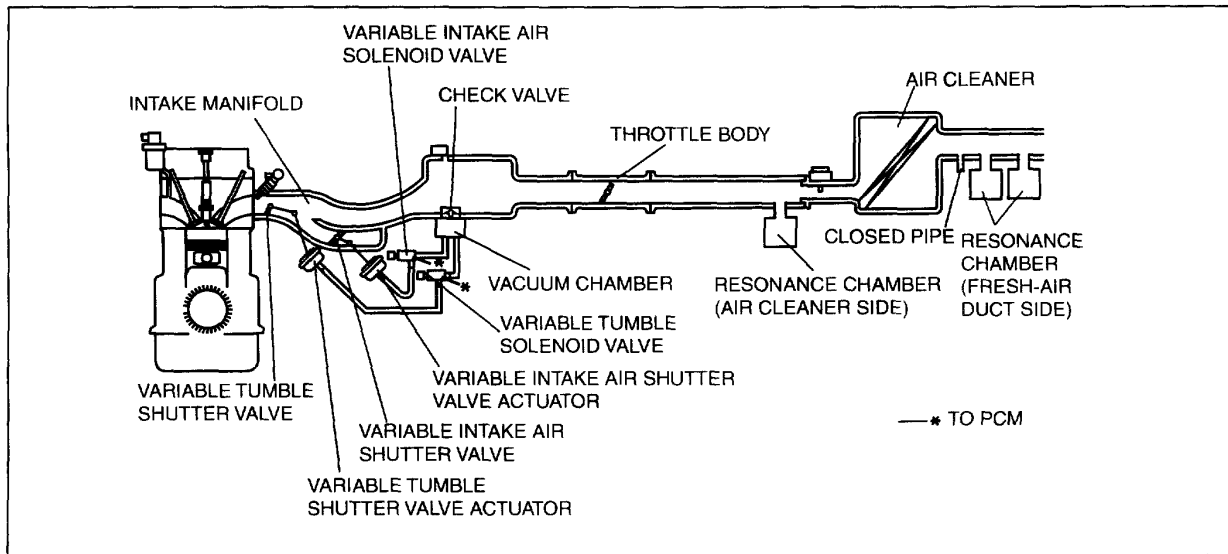
Labor

Operation	Qualifier Path	Skill	Std Hrs	Wty Hrs
Replace	Intake Manifold	B	2.3	1.9

Components (itype_32)

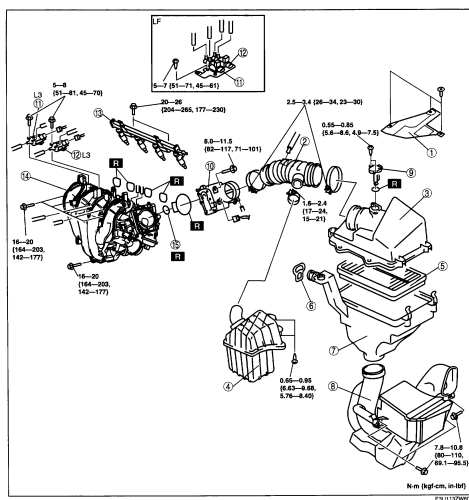
INTAKE AIR SYSTEM DIAGRAM[LF, L3]

id0113a5804000

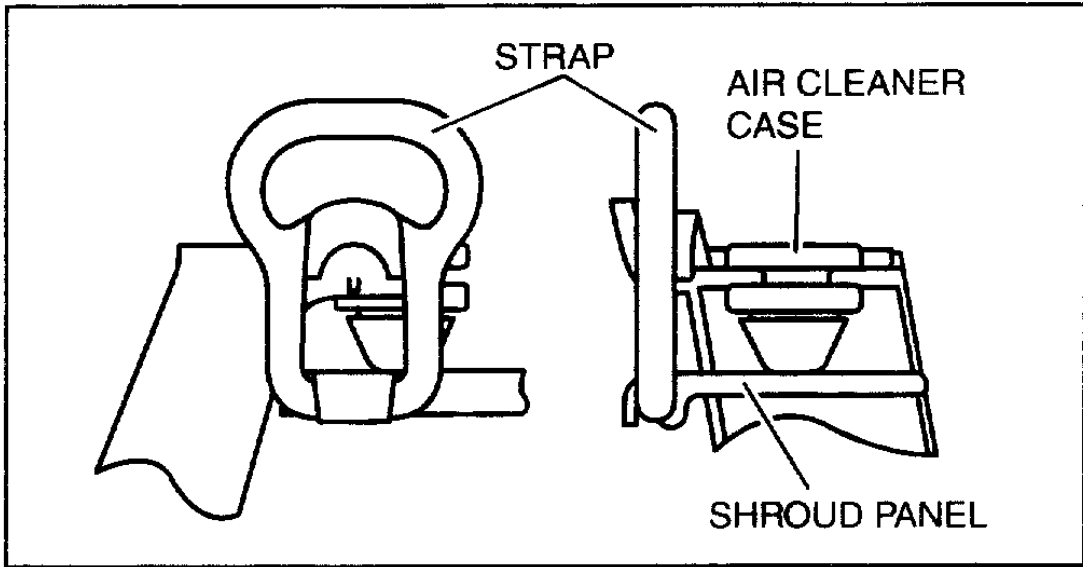


E3U113ZW6002

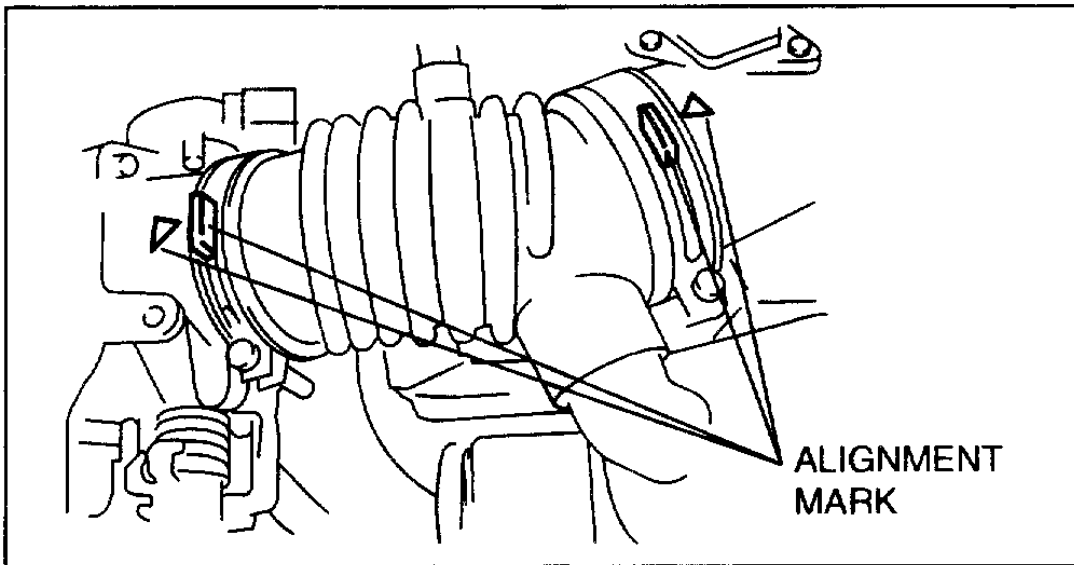
Removal and Replacement (itype_401)



1 Intake air cover	9 MAF/IAT sensor
2 Air hose	10 Throttle body
3 Air cleaner cover	11 Variable intake air solenoid valve
4 Resonance chamber (Air cleaner side)	12 Variable tumble solenoid valve
5 Air cleaner element	13 Fuel distributor
6 Strap	14 Intake manifold
7 Air cleaner case	15 EGR pipe gasket
8 Fresh-air duct	



C3U0113W006



C3U0113W007

All Technical Service Bulletins (itype_100)

Tsbs
- Engine - MIL ON/DTC P2004 Set (0101209, 2009/04/09)

Customer Interest Bulletins (itype_109)

Tsbs
- Engine - MIL ON/DTC P2004 Set (0101209, 2009/04/09)

New / Updated Parts (itype_117)

Tsbs
- Engine - MIL ON/DTC P2004 Set (0101209, 2009/04/09)