

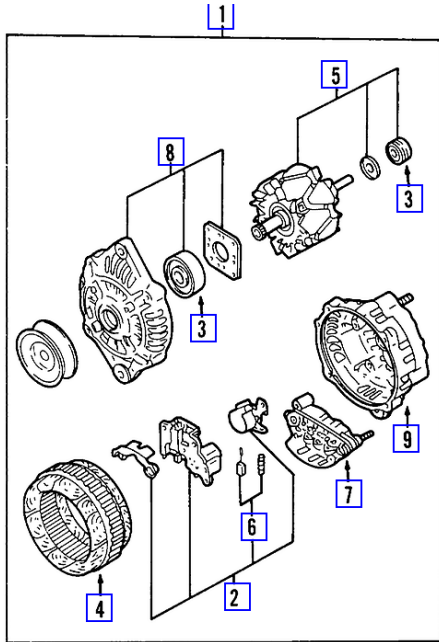
# Component Procedures: Charging System

## Table of Contents

1. Exploded Parts Diagram (itype\_83)
2. Parts and Labor (itype\_189)
3. Electrical (OE) (itype\_21)
4. Components (itype\_32)
5. Electrical (itype\_27)

# Component Procedures: Charging System

## Exploded Parts Diagram (itype\_83)



## Parts and Labor (itype\_189)

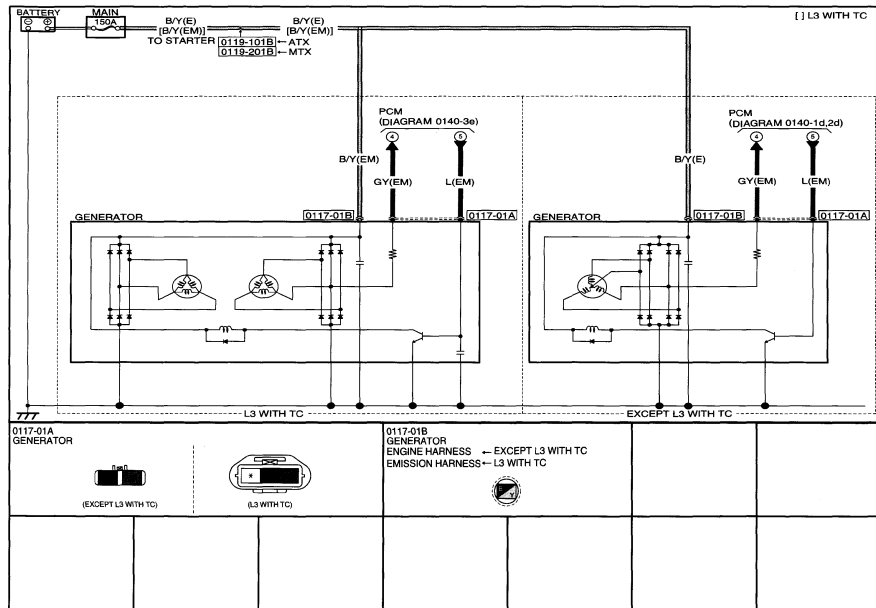
### Labor

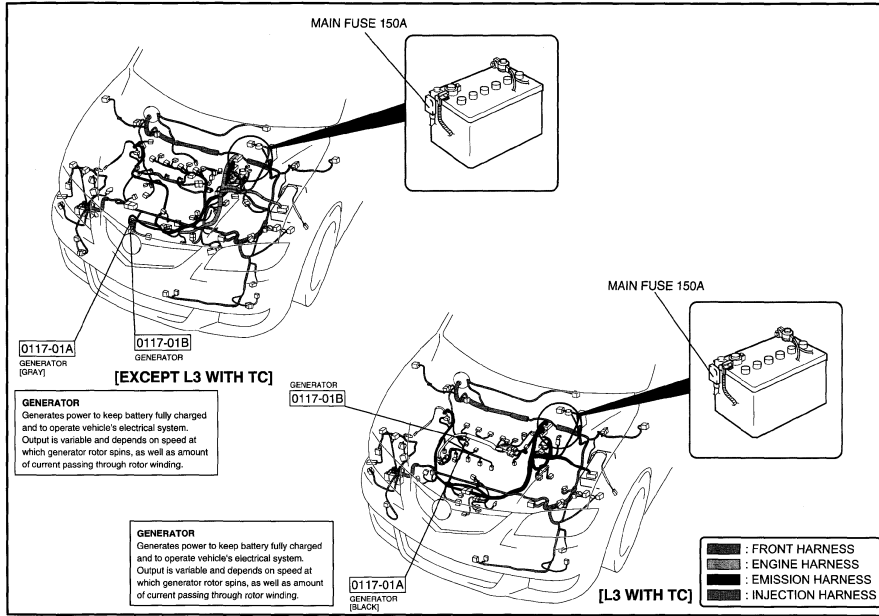
Operation	Qualifier Path	Skill	Std Hrs	Wty Hrs
Inspect	Charging Circuit, Inspect	B	0.5	0.0

## Electrical (OE) (itype\_21)

### CHARGING SYSTEM

0117

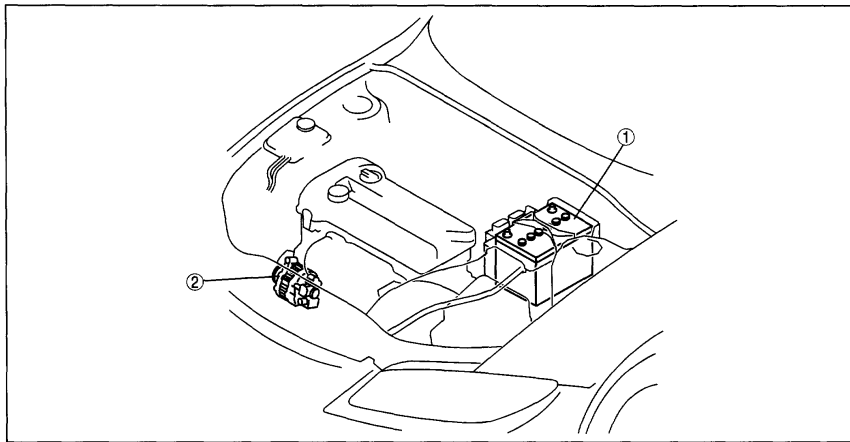




## Components (itype\_32)

### CHARGING SYSTEM LOCATION INDEX[L3, L3]

id0117a4800100



e3u117zw6001

1	Battery
---	---------

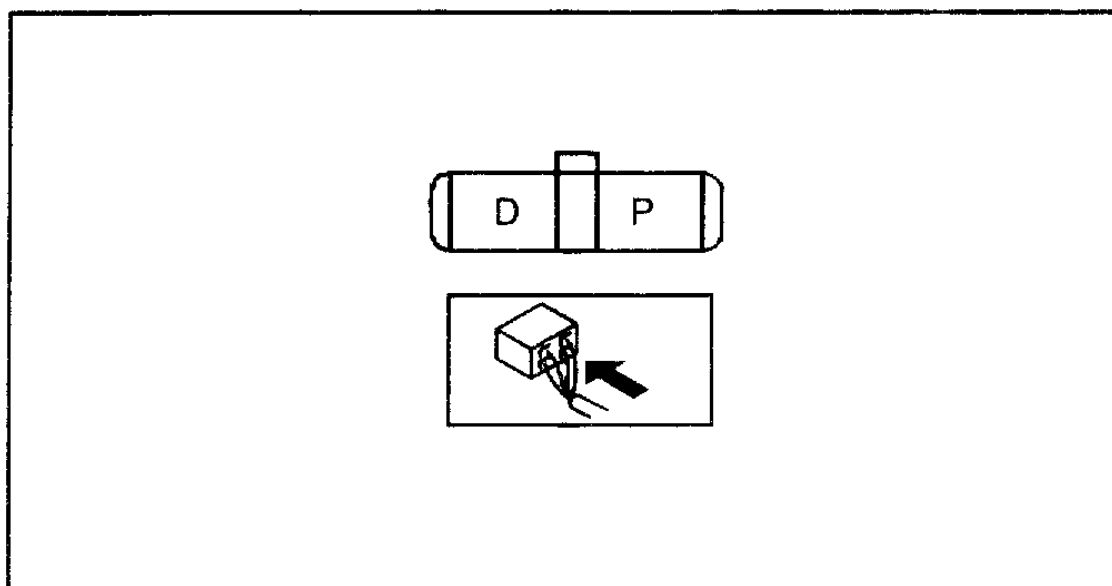
2	Generator
---	-----------

## Electrical (itype\_27)

## Standard specification

Terminal	IG-ON (V)	Idle (V) [20°C {68 °F}]
B	B+	13.0—15.0
P	Approx. 1.0 or less	Approx. 3.0—8.0
D	Approx. 0	*

\* : Turn the following electrical loads on and verify that the voltage reading increases.



am3uuw000095