

Component Procedures: Backup Lamp

Table of Contents

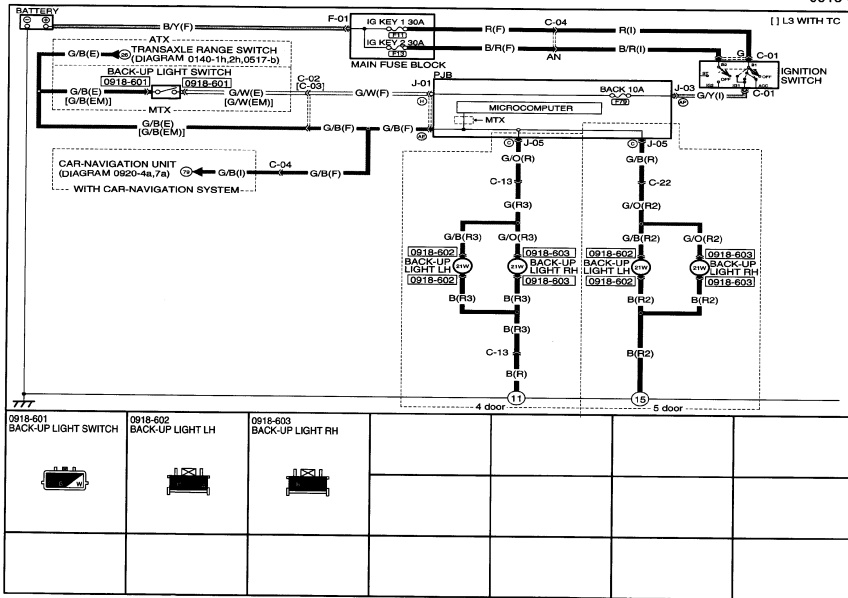
1. Electrical (OE) (itype_21)
2. Removal and Replacement (itype_401)
3. Component Tests and General Diagnostics (itype_383)

Component Procedures: Backup Lamp

Electrical (OE) (itype_21)

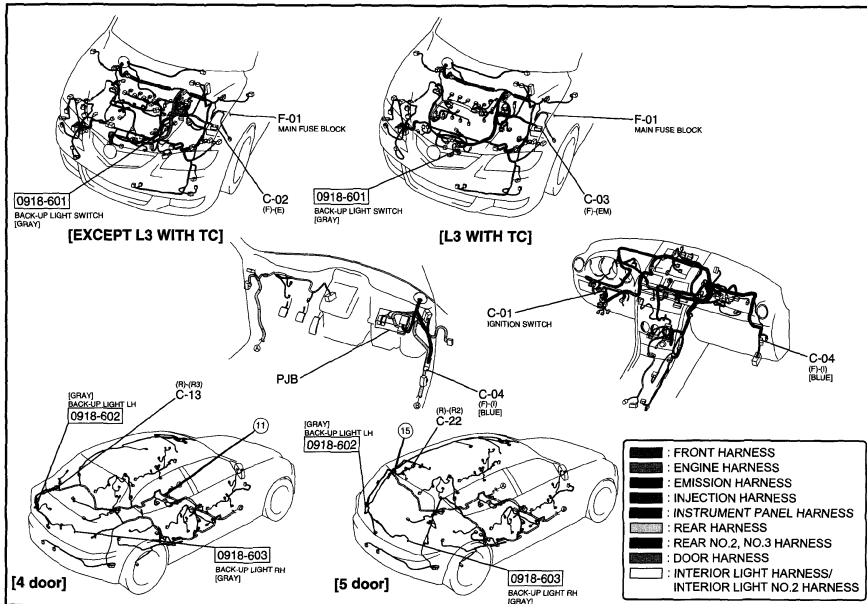
BACK-UP LIGHT

0918-6

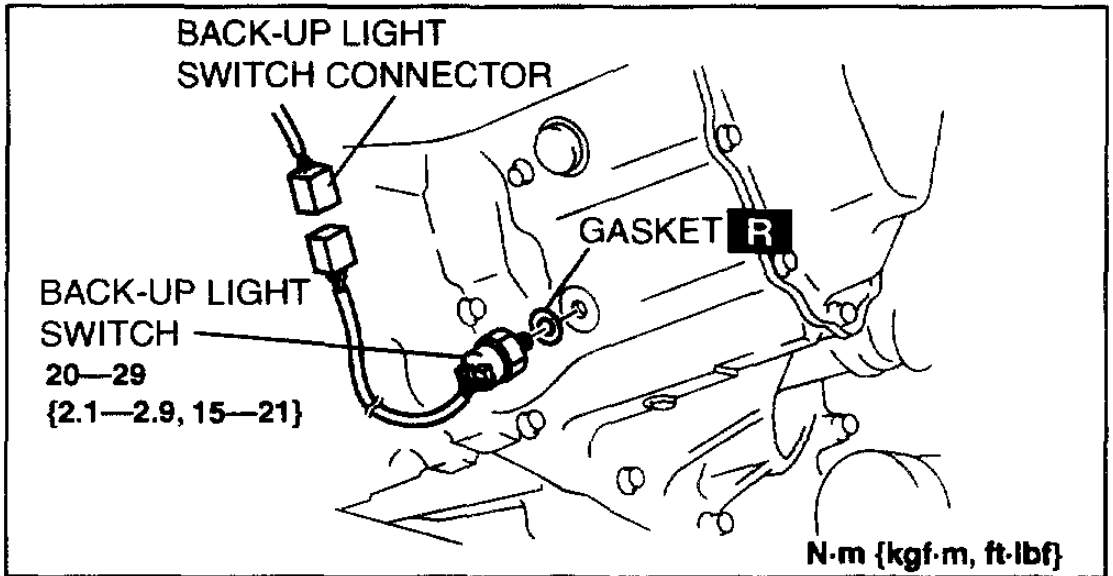


BACK-UP LIGHT

0918-6



Removal and Replacement (itype_401)



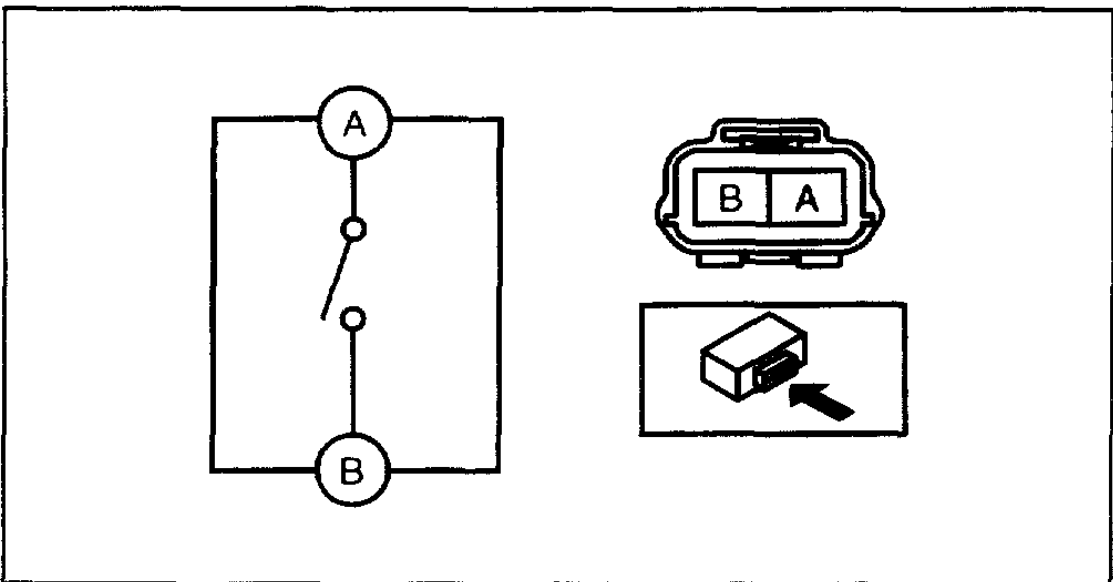
B3E0918W124

Component Tests and General Diagnostics (itype_383)

○ — ○ : Continuity

Shift lever position	Terminal	
	A	B
Reverse	○ — ○	○ — ○
Except above		

B3E0918W164



ADJ8112W031