

Component Procedures: Driver/Vehicle Information Display

Table of Contents

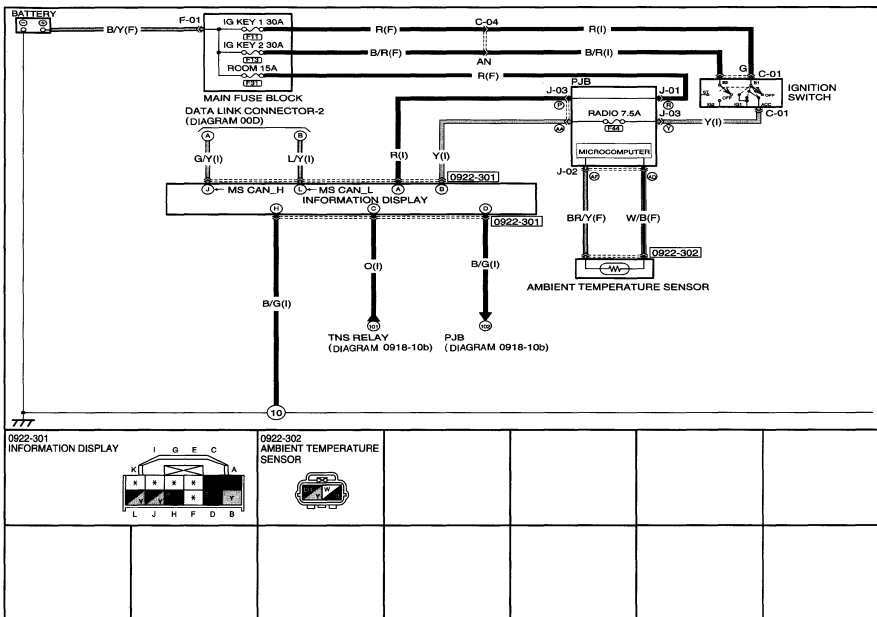
1. Electrical (OE) (itype_21)
2. Removal and Replacement (itype_401)
3. Without Manufacturer's Scan Tool (Article 1409738)

Component Procedures: Driver/Vehicle Information Display

Electrical (OE) (itype_21)

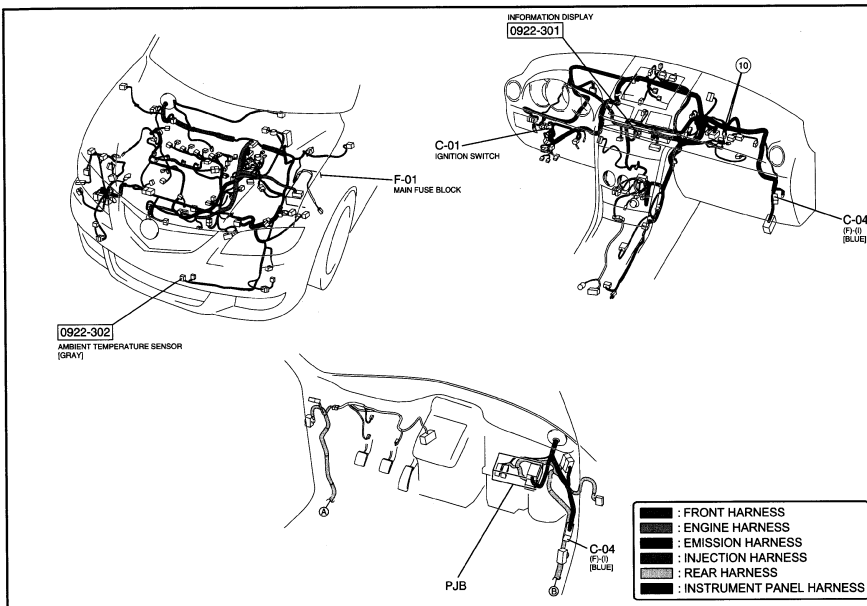
INFORMATION DISPLAY

0922-3



INFORMATION DISPLAY

0922-3



Removal and Replacement (itype_401)

INFORMATION DISPLAY

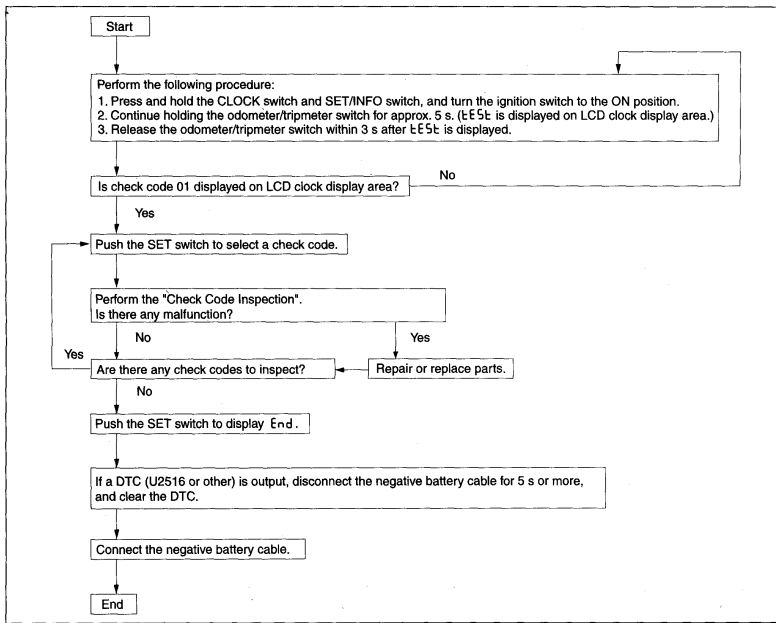
REMOVAL/INSTALLATION

(See CENTER PANEL UNIT DISASSEMBLY/ASSEMBLY.)

Without Manufacturer's Scan Tool (Article 1409738)

Check Code Table

Check code	Check item	Related items
01	Information display	CAN system • DTC U2516: CAN system communication error
02	<ul style="list-style-type: none"> • Audio unit • Climate control unit • Instrument cluster 	CAN system • DTCU0184: Communication error to audio unit • DTCU0164: Communication error to climate control unit • DTCU0181: Communication error to instrument cluster
04	TNS relay	<ul style="list-style-type: none"> • TNS relay • PJB • TNS signal wiring harness
—	LCD	LCD



am3uuv000049