

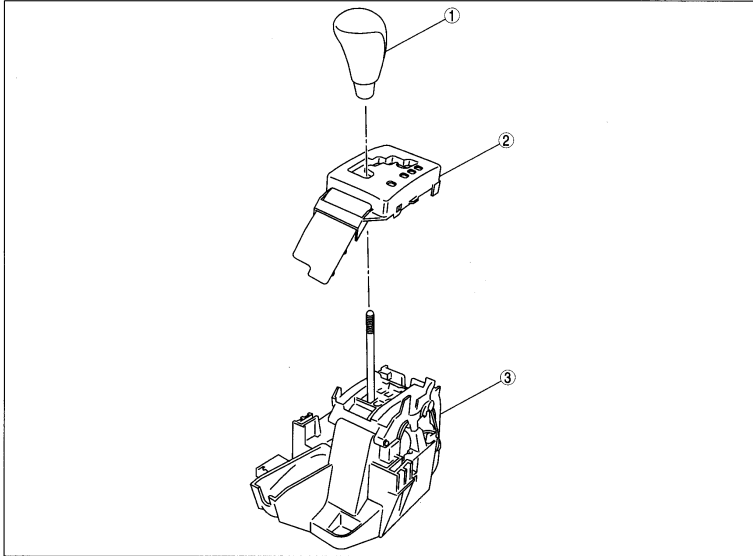
Component Procedures: Shifter A/T

Table of Contents

1. Selector Lever Disassembly/Assembly (Article 1371803)
2. Selector Lever Component Removal/Installation (Article 1369880)

Component Procedures: Shifter A/T

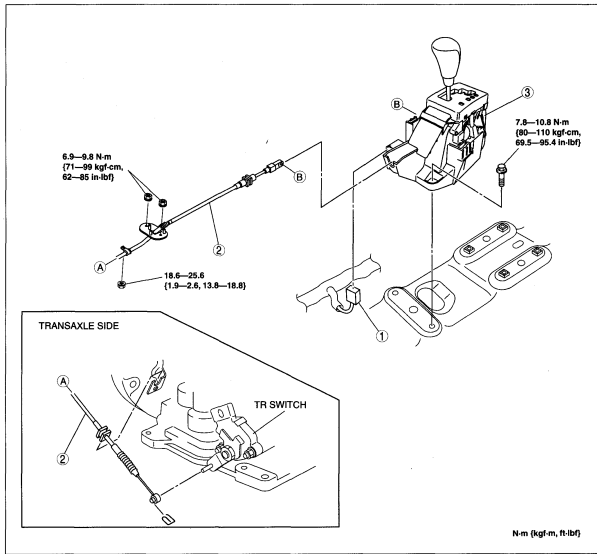
Selector Lever Disassembly/Assembly (Article 1371803)



B3E0518W011

1	Selector lever knob	3	Selector lever component
2	Indicator panel		

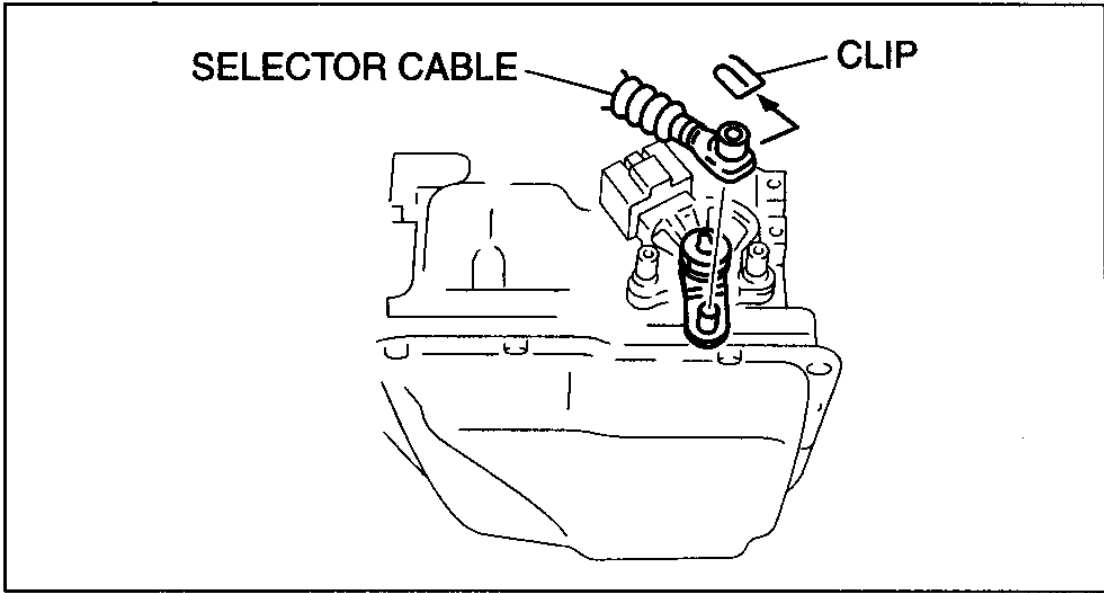
Selector Lever Component Removal/Installation (Article 1369880)



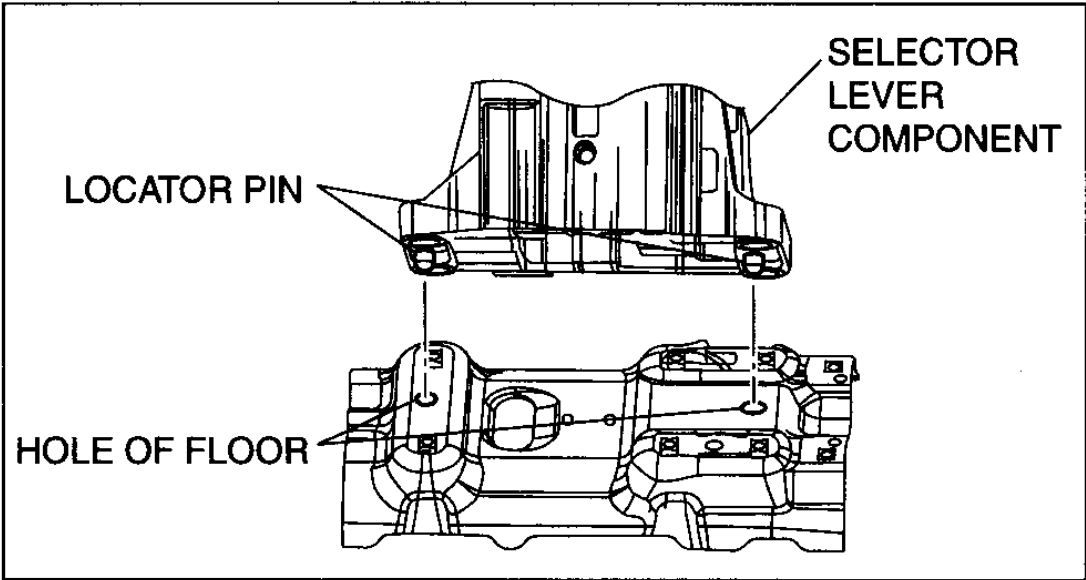
N·m (kgf·m, ft·lb)

anr3jauw0000104

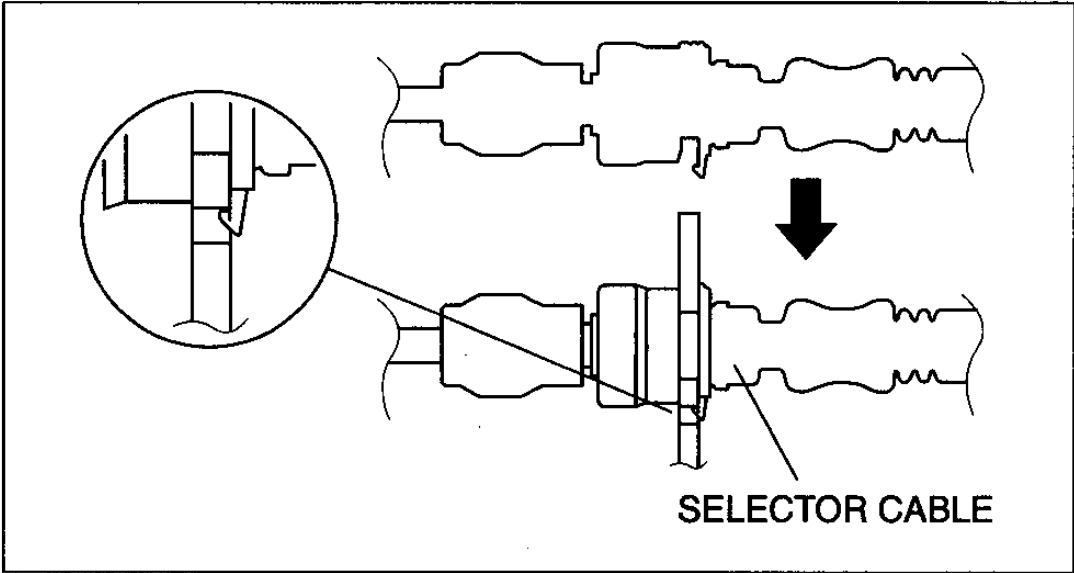
1	Selector lever component connector	3	Selector lever component (See Selector Lever Component Installation Note.)
2	Selector cable (See Selector Cable Removal Note.) (See Selector Cable Installation Note.)		



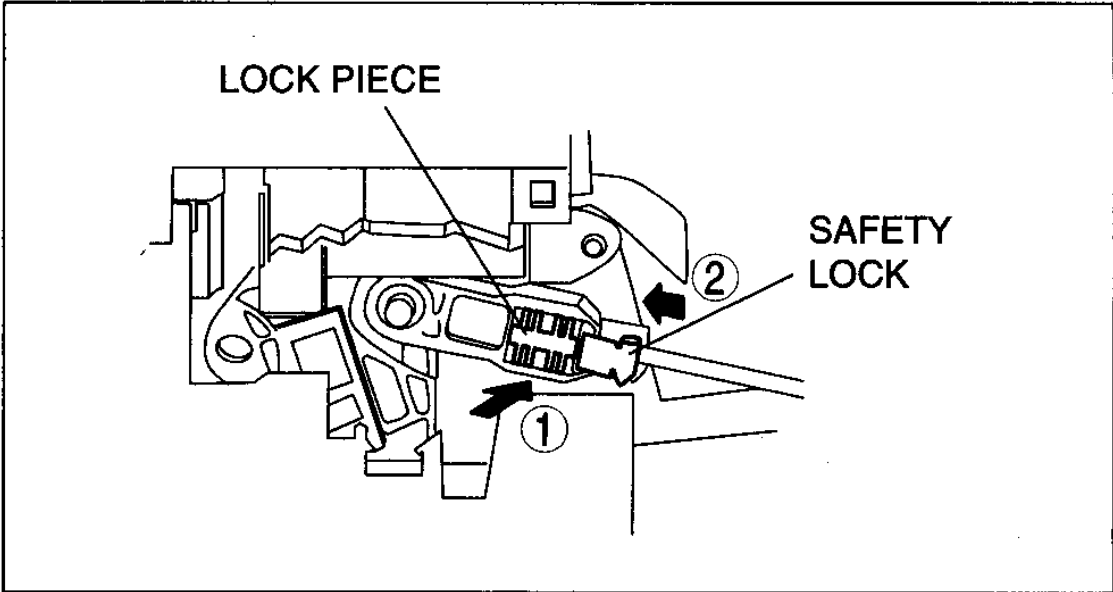
am3uuw0000104



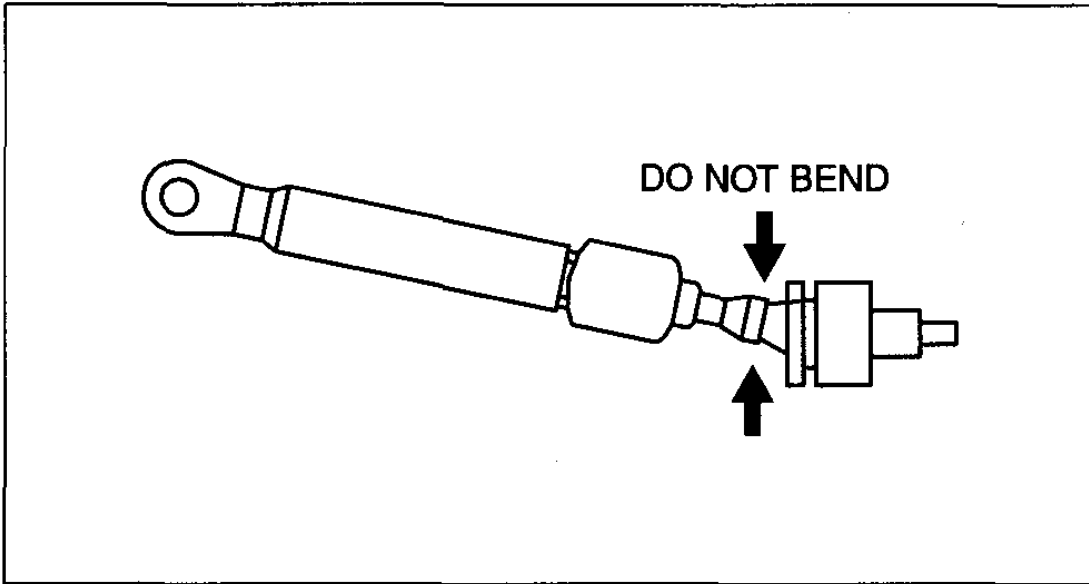
am3uuw0000104



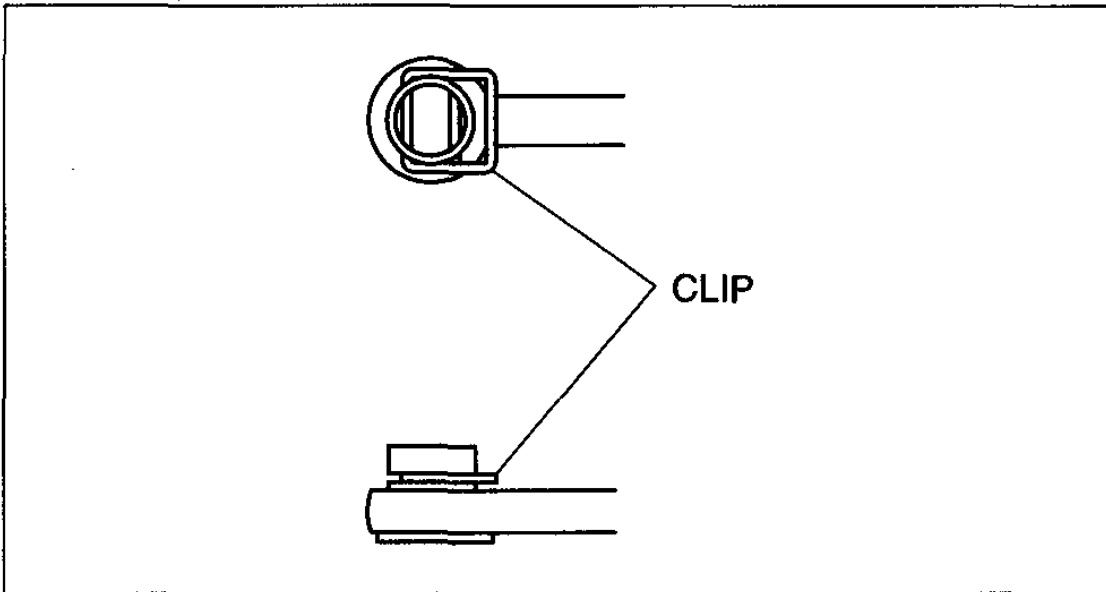
am3uuw0000104



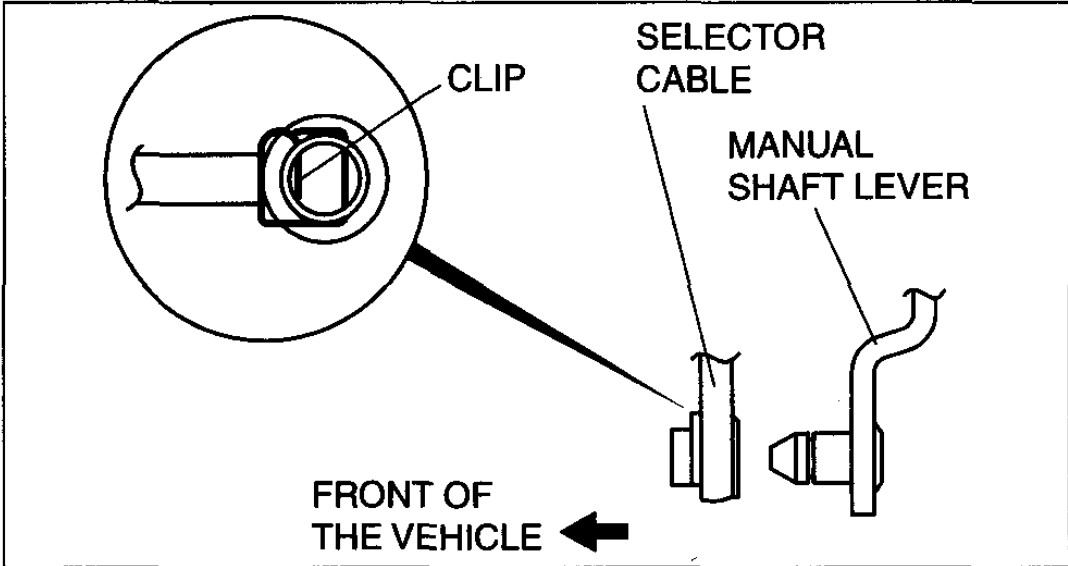
b3e0518w006



am3uuw0000104



am3uuw0000104



am3uuw0000104