

Component Procedures: Brake Master Cylinder

Table of Contents

1. Parts and Labor (itype_189)
2. Master Cylinder Removal/Installation (Article 1361844)

Component Procedures: Brake Master Cylinder

Parts and Labor (itype_189)

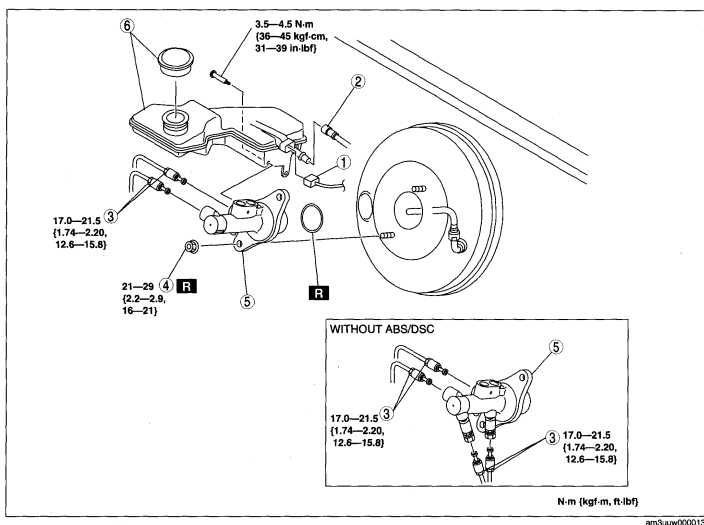
Parts

Qualifier	Part #	Name	Price	Note
Master Cylinder > With ABS	BPYS4340ZA	Master Cylinder	196.56	
Master Cylinder > Without ABS	BNYR4340ZA	Master Cylinder	324.39	
Master Cylinder Reservoir	BPYL4355Z	Master Cylinder Reserv?	56.65	

Labor

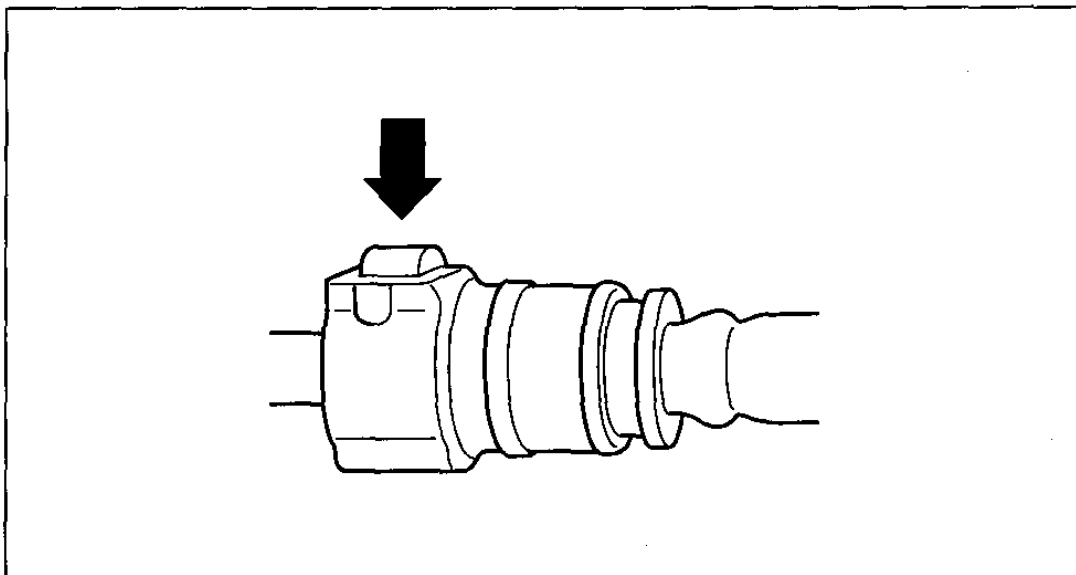
Operation	Qualifier Path	Skill	Std Hrs	Wty Hrs
Replace	Master Cylinder, R&R	B	1.2	0.9
Overhaul/Rebuild	Master Cylinder, Overhaul	B	1.6	0.0

Master Cylinder Removal/Installation (Article 1361844)



1	Brake fluid level sensor connector
2	Reserve hose (MTX) (See Reserve Hose (MTX) Removal Note.) (See Reserve Hose (MTX) Installation Note.)
3	Brake pipe

4	Nut
5	Master cylinder
6	Reserve tank, cap



am3uuw0000026