

Component Procedures: Battery

Table of Contents

1. Parts and Labor (itype_189)
2. Procedures (itype_376)
3. Removal and Replacement (itype_401)
4. Electrical (itype_27)
5. All Technical Service Bulletins (itype_100)
6. Repair Tips (itype_110)
7. Component Tests and General Diagnostics (itype_383)
8. OEM Policies and Procedures (itype_120)
9. Tools and Equipment (itype_113)

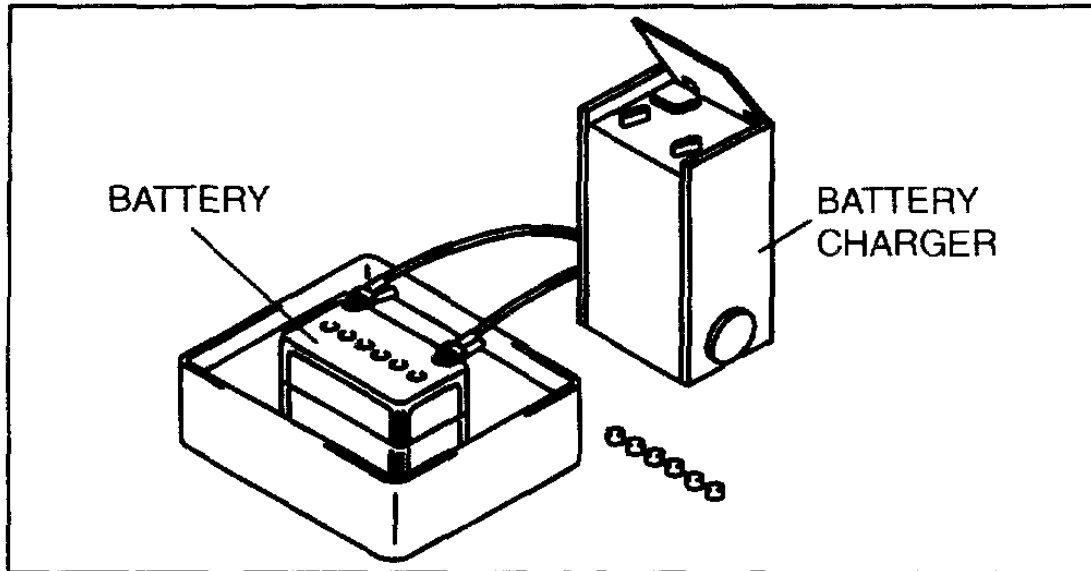
Component Procedures: Battery

Parts and Labor (itype_189)

Labor

Operation	Qualifier Path	Skill	Std Hrs	Wty Hrs
Service or Charge	Battery, Charge/Test	B	0.4	0.0
Replace	Battery, R&R	B	0.3	0.2
Clean	Battery Terminals, Clean	B	0.3	0.2
Clean	Battery Terminals, Clean > Each	B	0.2	0.0

Procedures (itype_376)



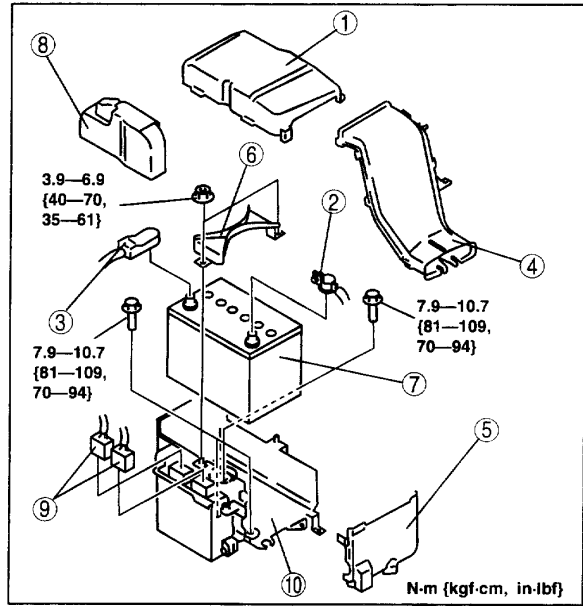
CHU0117W004

Standard specification

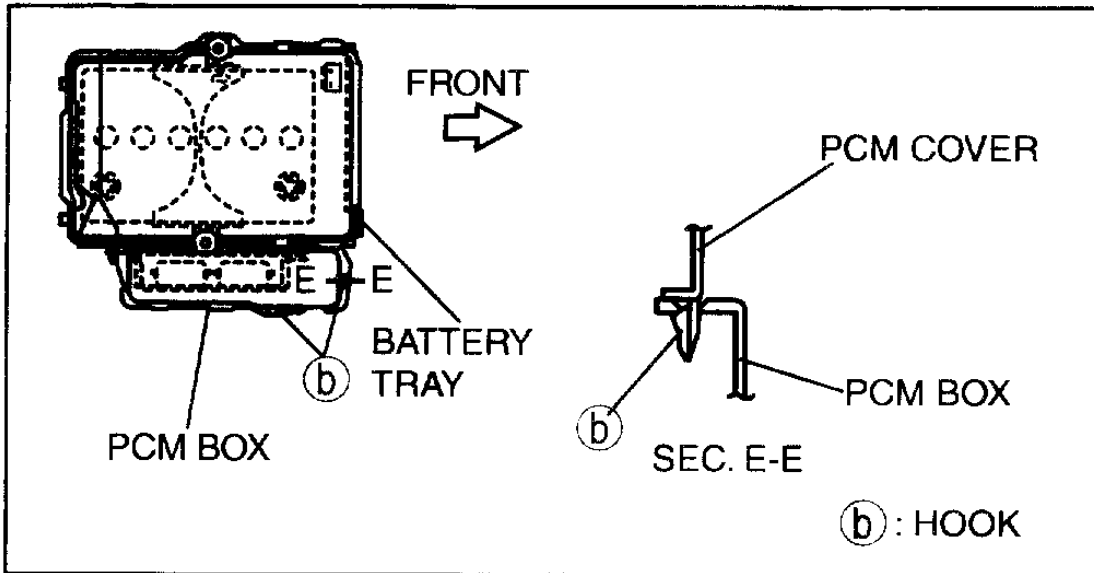
Battery type (5-h rate)	Recharge current (A)	Quick charge (A/30 min)
50D20L (40)	4.0—5.0	25
75D23L (52)	5.0—6.0	35
80D26L (55)	5.5—6.5	35

Removal and Replacement (itype_401)

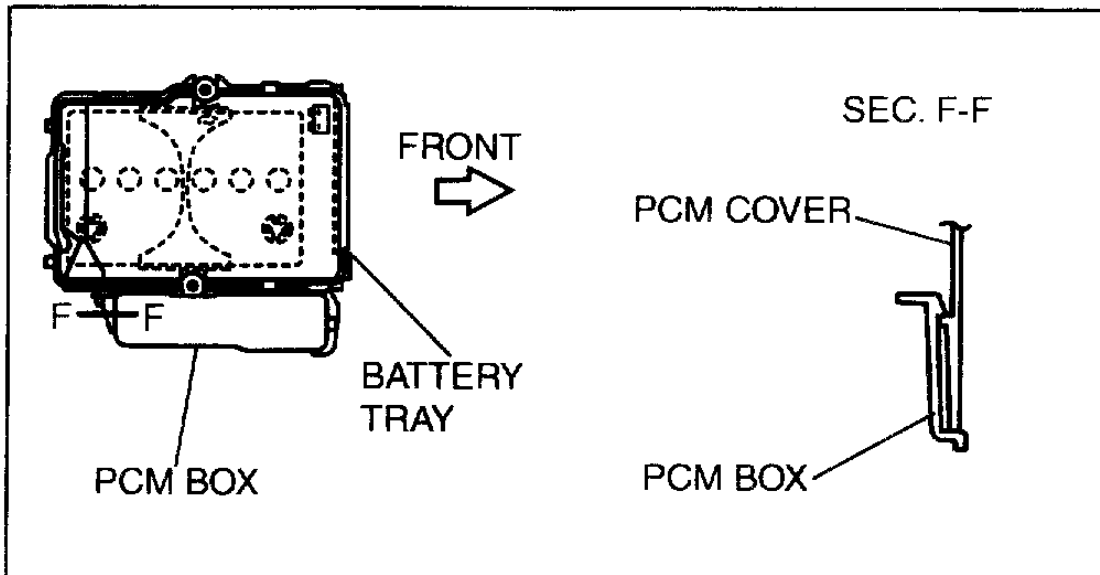
1	Battery cover
2	Negative battery cable
3	Positive battery cable
4	Battery duct
5	Battery box
6	Battery clamp
7	Battery
8	PCM cover
9	PCM connectors
10	Battery tray and PCM component



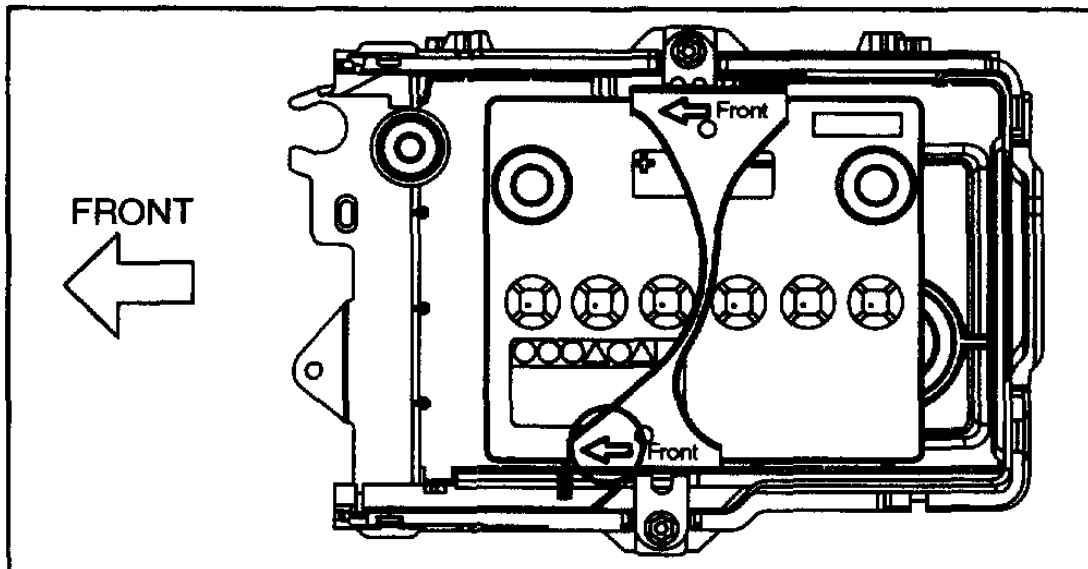
b3e0117w004



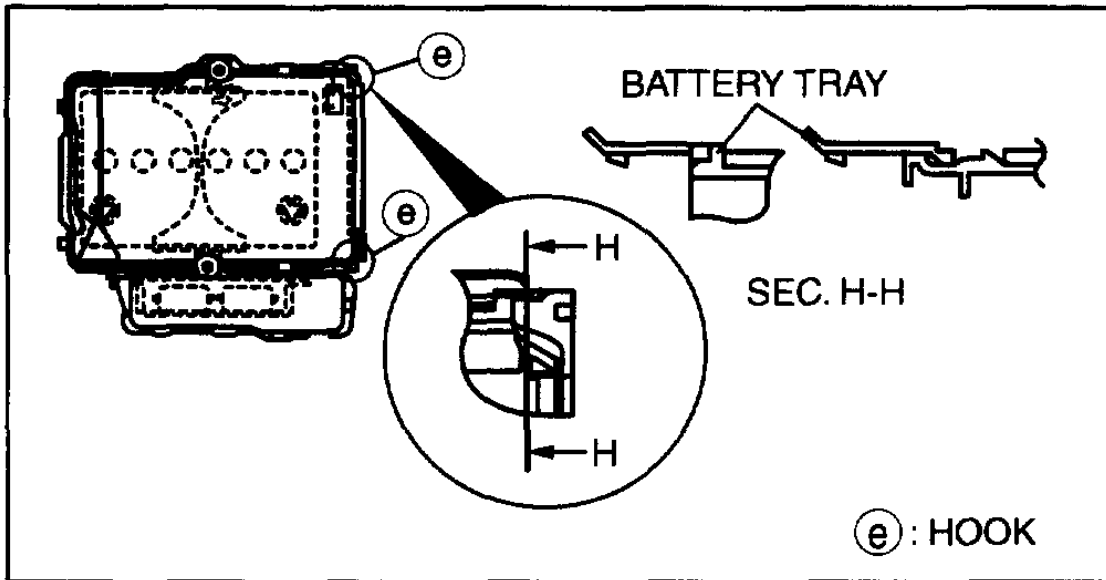
B3E0117W012



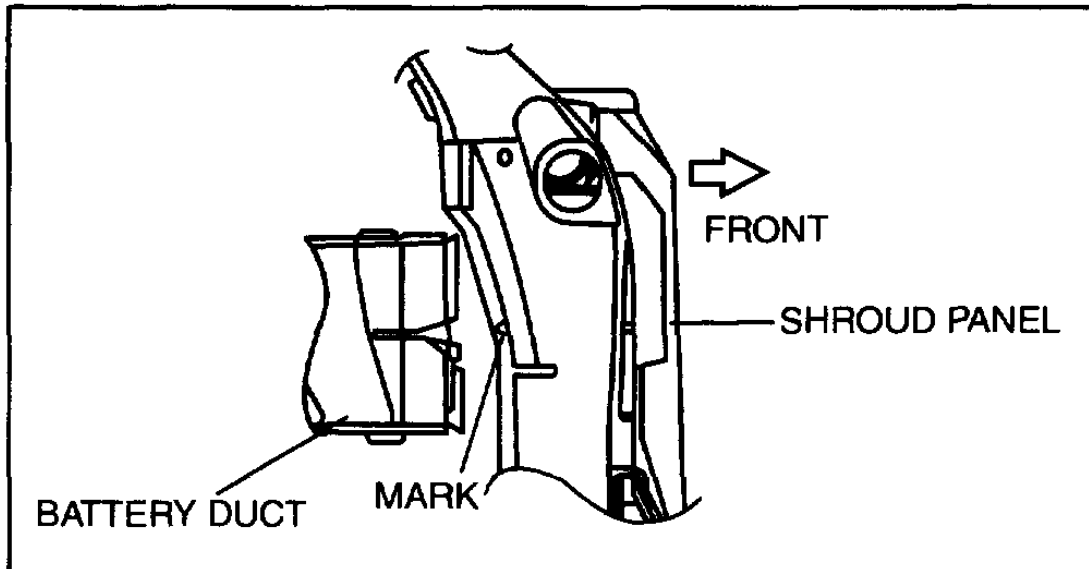
B3E0117W010



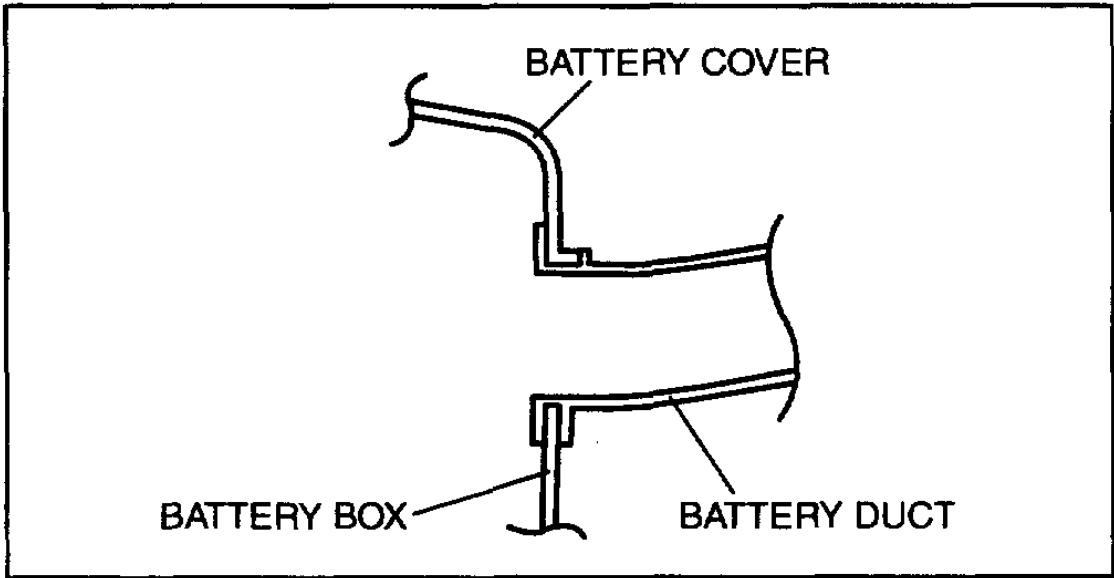
dpe117aw1003



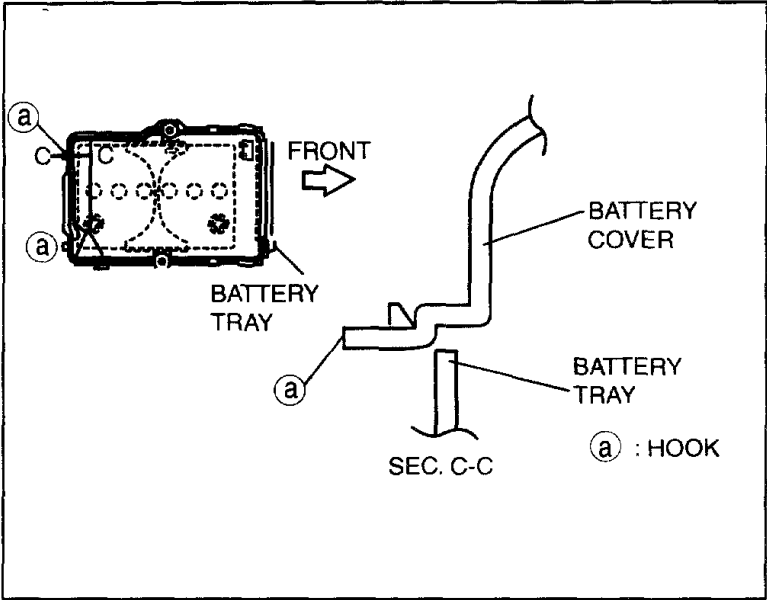
B3E0117W015



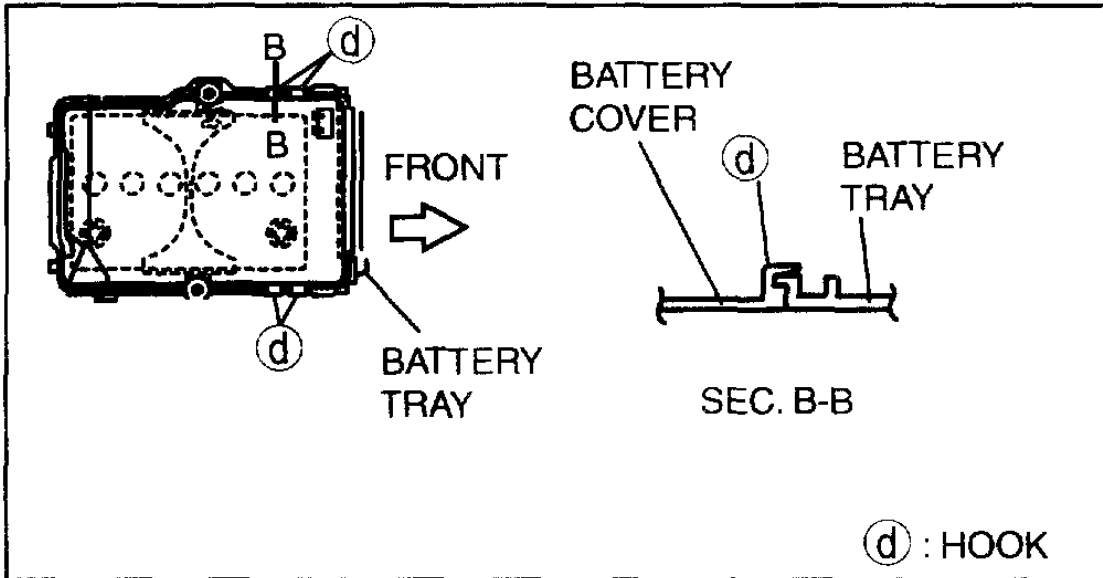
B3E0117W008



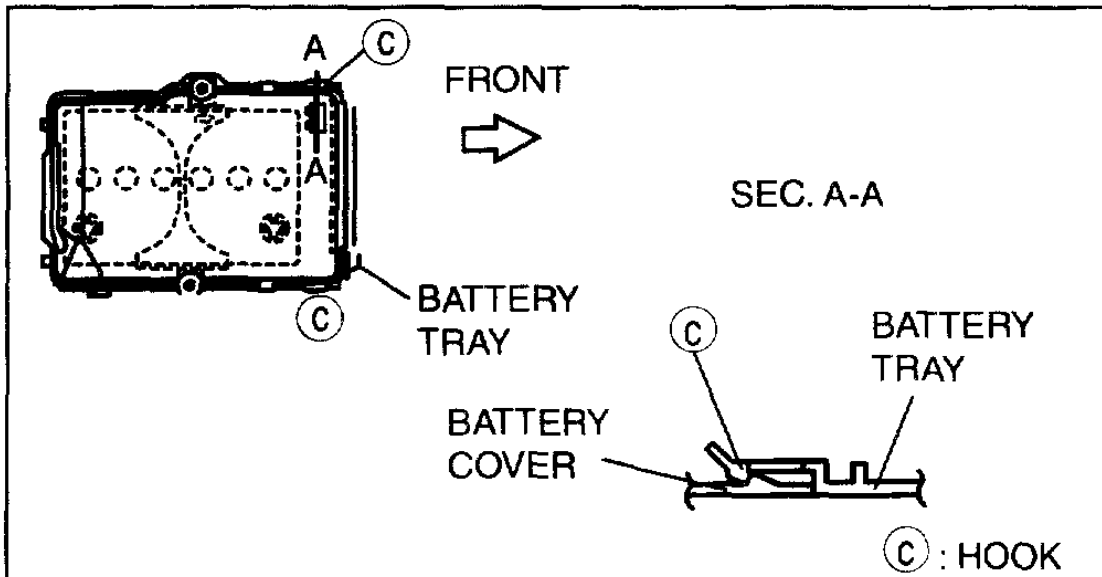
B3E0118W003



b3e0118w004



dpe117aw1005



B3E0117W013

Electrical (itype_27)

Load test chart

Battery	Current load (A)
50D20L	150
75D23L	195
80D26L	195

Standard specification

Battery temp. (°C {°F})	Minimum voltage (V)
4 {39}	9.3
10 {50}	9.4
16 {61}	9.5
21 {70}	9.6

All Technical Service Bulletins (itype_100)

Tsbs

- Electrical - Battery Maintenance (0100311, 2011/01/12)
- Battery Maintenance (01-006/22, 2022/06/22)
- Electrical - Battery Cover Removal Precaution (0102909, 2009/07/10)
- Battery - Testing Information (0101010, 2010/02/02)

Repair Tips (itype_110)

Tsbs

- Electrical - Battery Maintenance (0100311, 2011/01/12)
- Electrical - Battery Cover Removal Precaution (0102909, 2009/07/10)
- Battery - Testing Information (0101010, 2010/02/02)

Component Tests and General Diagnostics (itype_383)

Step	Inspection		Action
1	Measure the battery positive voltage.	12.4 V or more	Go to Step 3.
		Less than 12.4 V	Go to the next step.
2	Quick charge for 30 min and recheck voltage.	12.4 V or more	Go to the next step.
		Less than 12.4 V	Replace the battery.
3	Using the battery load tester, apply load current (see load test chart) and record battery voltage after 15 s. Is voltage more than the specification?	Yes	Normal
		No	Replace the battery.

Load test chart

Battery	Current load (A)
50D20L	150
75D23L	195
80D26L	195

Standard specification

Battery temp. (°C {°F})	Minimum voltage (V)
4 {39}	9.3
10 {50}	9.4
16 {61}	9.5
21 {70}	9.6

OEM Policies and Procedures (itype_120)

Tsbs

- Battery Maintenance (01-006/22, 2022/06/22)

Tools and Equipment (itype_113)

Tsbs

- Battery - Testing Information (0101010, 2010/02/02)