

Component Procedures: Daytime Running Lamp

Table of Contents

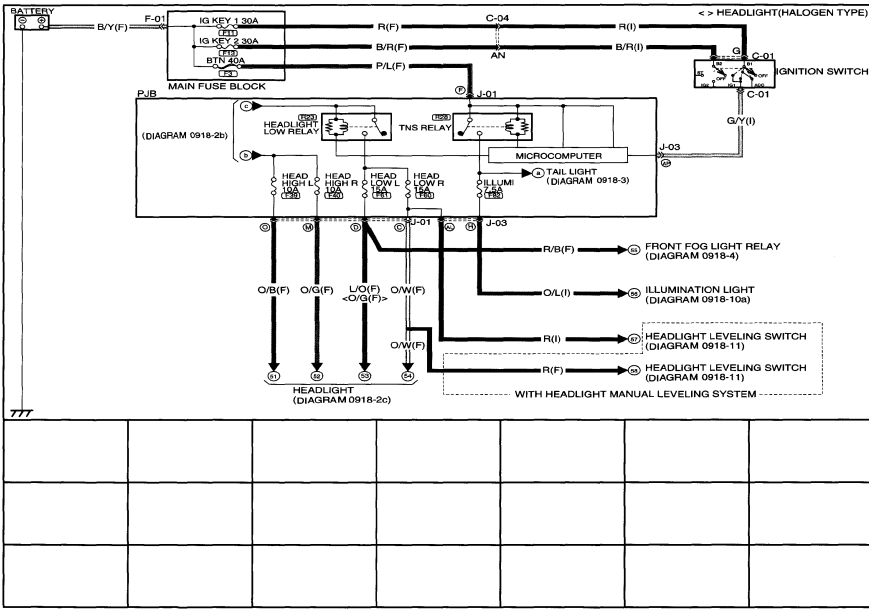
1. Electrical (OE) (itype_21)

Component Procedures: Daytime Running Lamp

Electrical (OE) (itype_21)

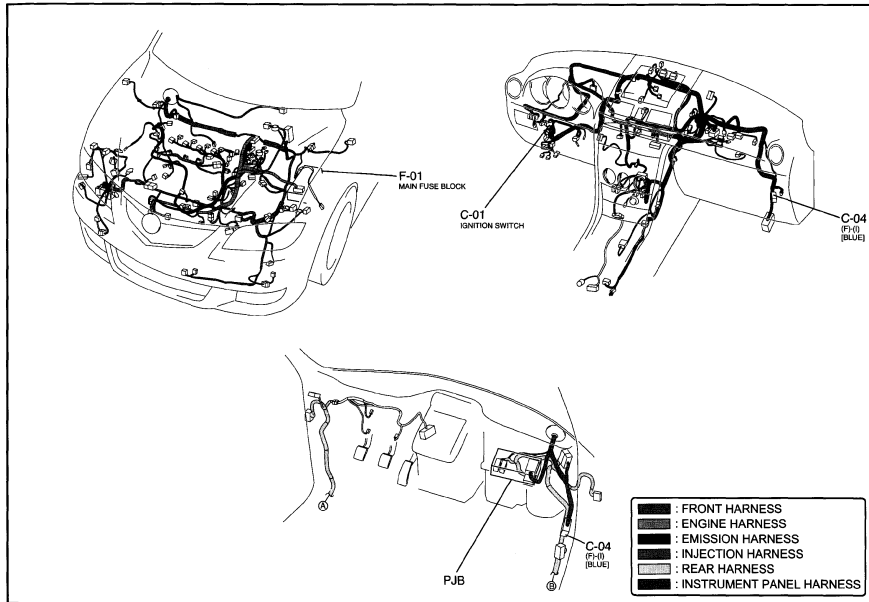
HEADLIGHT (WITH DRL)

0918-2a



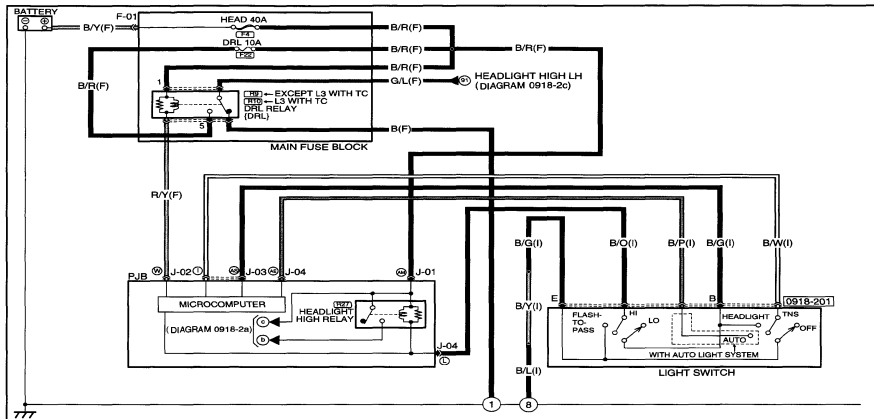
HEADLIGHT (WITH DRL)

0918-2a

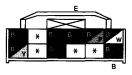


HEADLIGHT (WITH DRL)

0918-2b

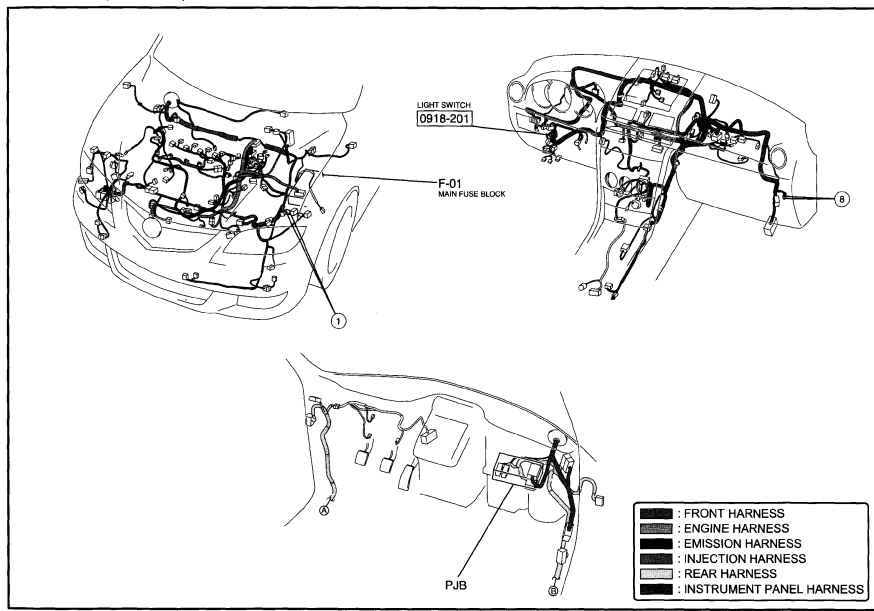


0918-201 LIGHT SWITCH



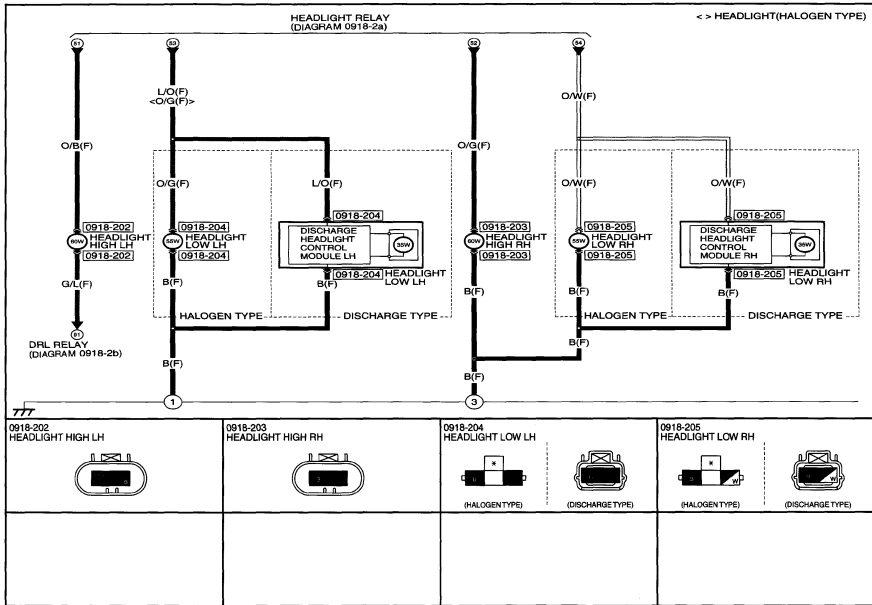
HEADLIGHT (WITH DRL)

0918-2b



HEADLIGHT (WITH DRL)

0918-2c



HEADLIGHT (WITH DRL)

0918-2c

