

Component Procedures: Fuel Tank

Table of Contents

1. Parts and Labor (itype_189)
2. Components (itype_32)
3. Fuel Tank Removal and Installation (Article 1371646)
4. Technician Safety Information (itype_15)
5. Fuel Tank Inspection (Article 1366774)

Component Procedures: Fuel Tank

Parts and Labor (itype_189)

Parts

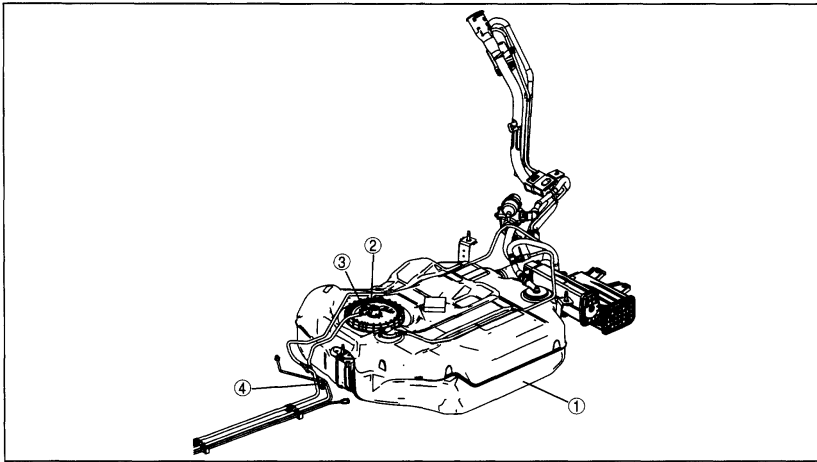
Qualifier	Part #	Name	Price	Note
Fuel Tank > Federal	BN8F42110	Fuel Tank	737.02	
Fuel Tank > California	BN8B42100G	Fuel Tank	2146.71	

Labor

Operation	Qualifier Path	Skill	Std Hrs	Wty Hrs
Replace	Fuel Tank, R&R	B	2.5	1.8

Components (itype_32)

Except for California emission regulation applicable model

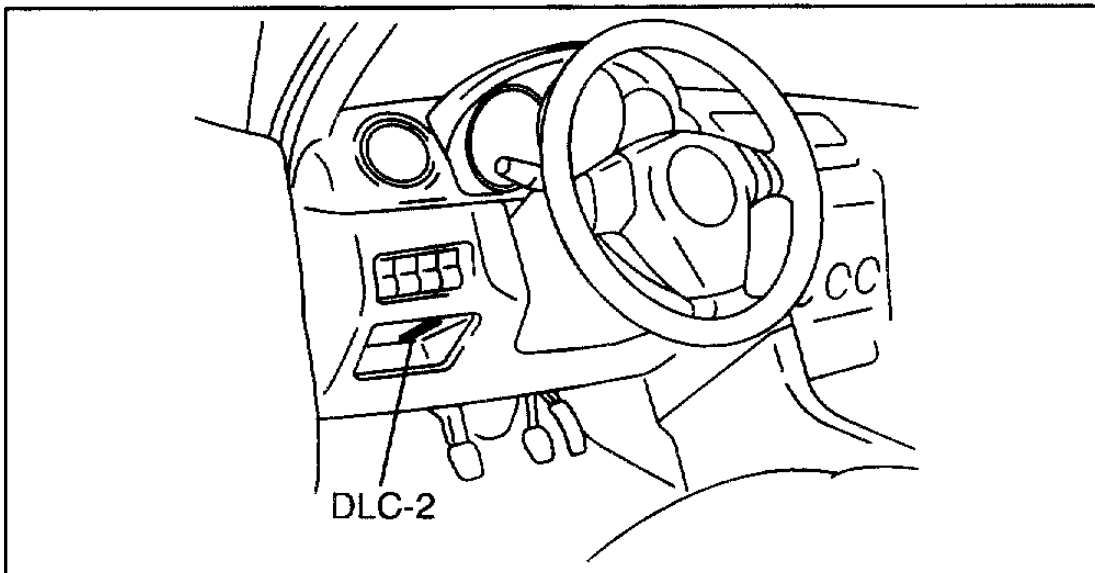


c3u0114w010

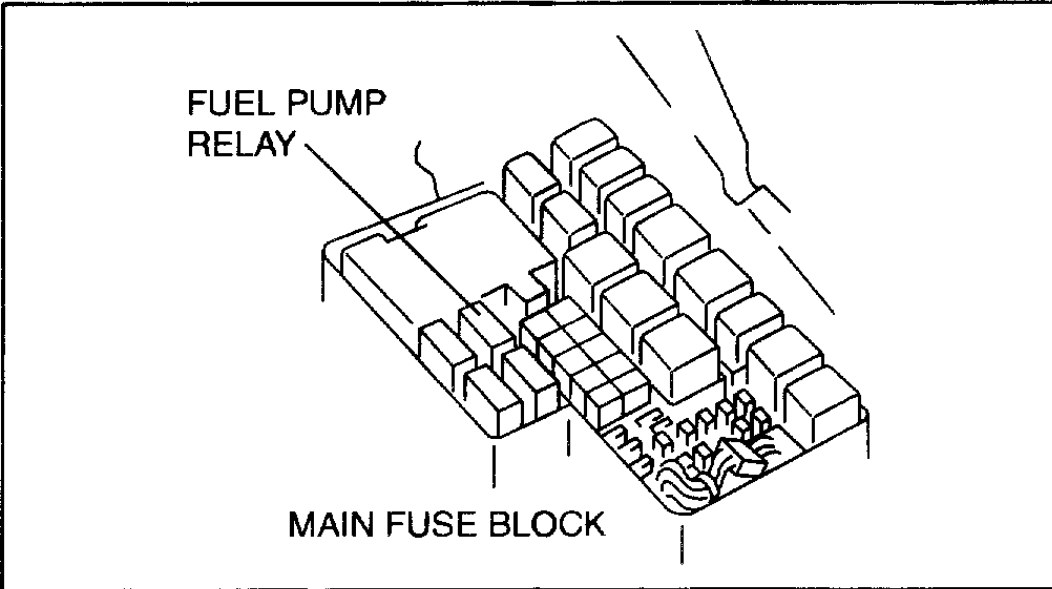
1	Fuel tank
---	-----------

2	Fuel pump unit
---	----------------

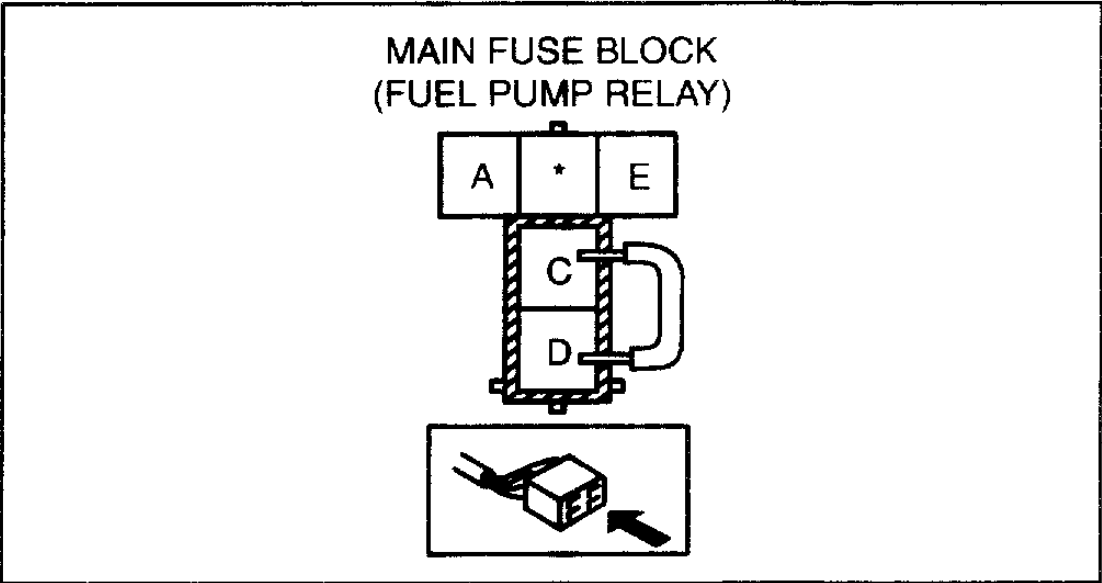
Fuel Tank Removal and Installation (Article 1371646)



am3uuw0000013

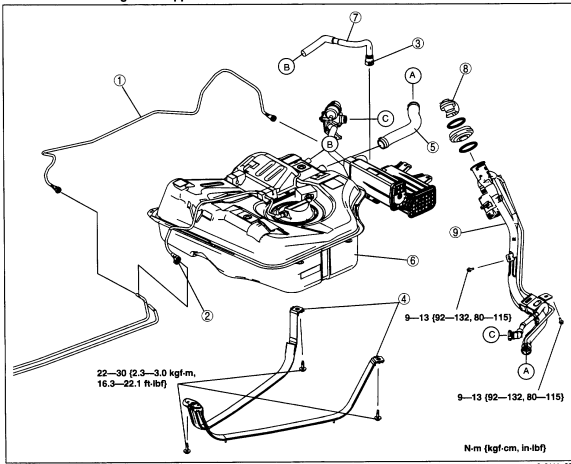


am3uuw0000013



ada3912w333

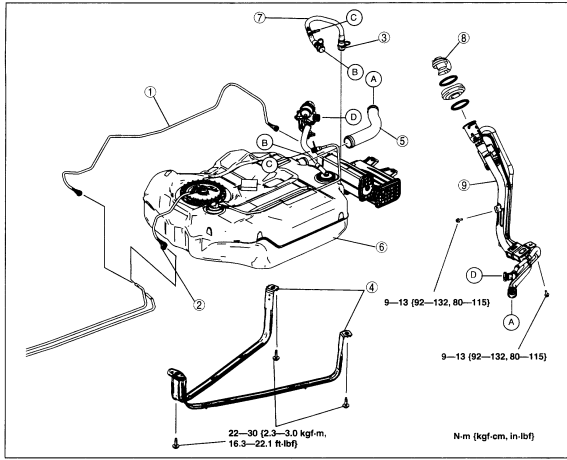
California emission regulation applicable model



1	Evaporative hose
2	Quick release connector (on fuel line)
3	Quick release connector (on charcoal canister)

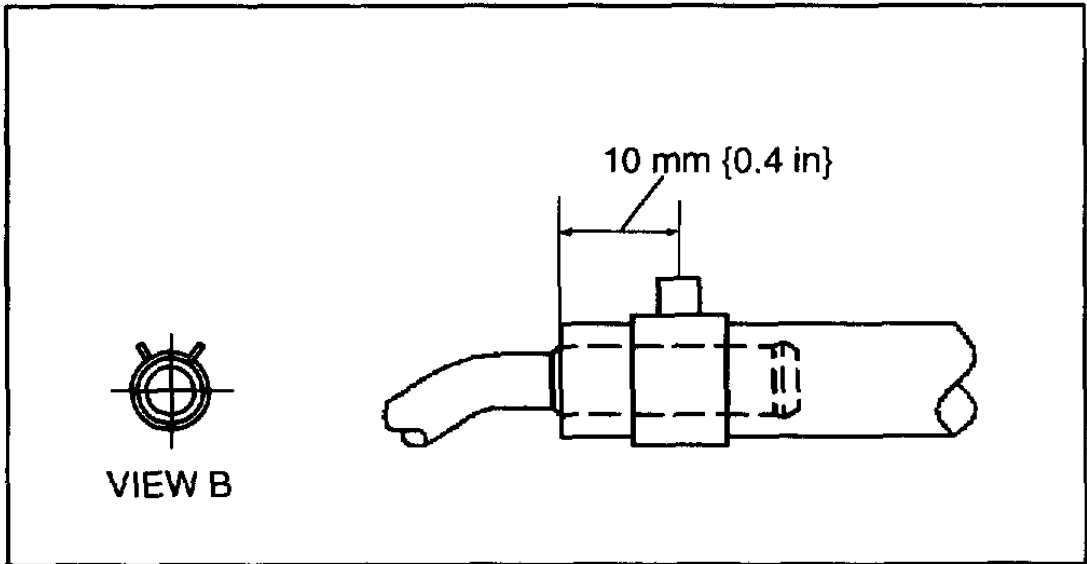
4	Strap
5	Joint hose
6	Fuel tank
7	Breather hose
8	Fuel-filler cap
9	Fuel-filler pipe

Except for California emission regulation applicable model

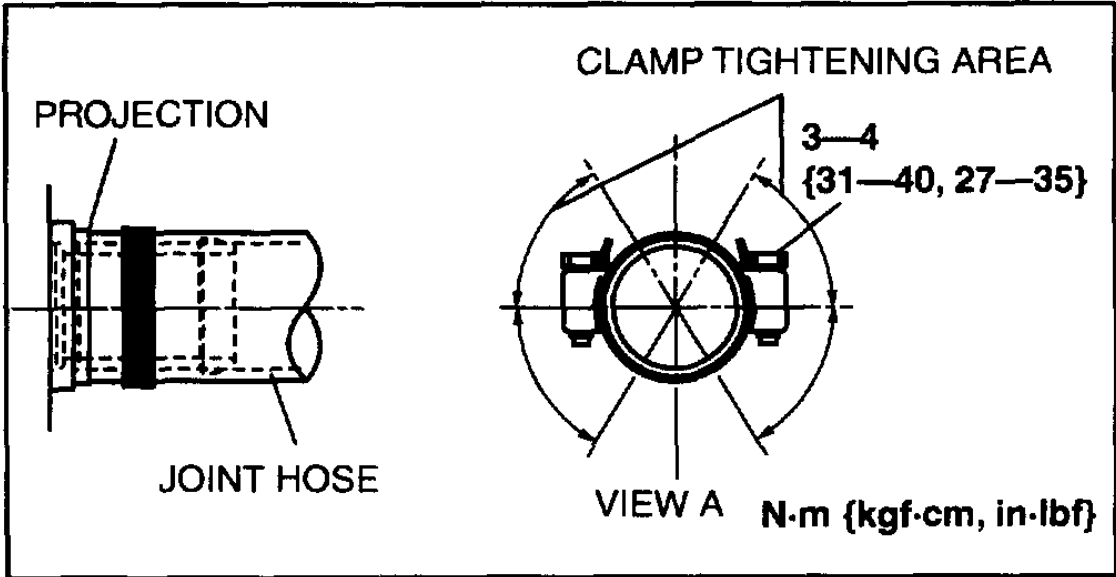


1	Evaporative hose
2	Quick release connector (on fuel line)
3	Quick release connector (on charcoal canister)

4	Strap
5	Joint hose
6	Fuel tank
7	Breather hose
8	Fuel-filler cap
9	Fuel-filler pipe



am3uuw0000013



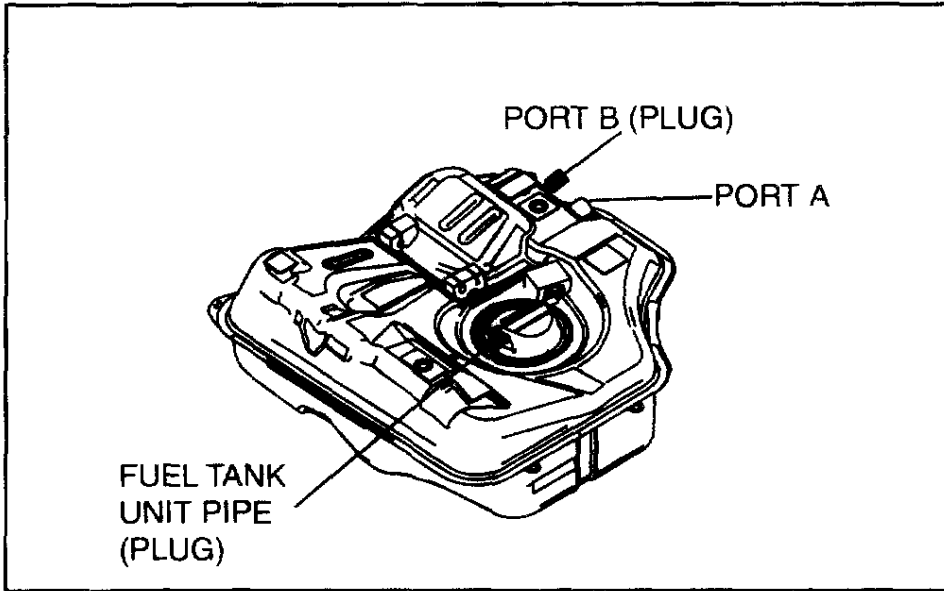
am3uuw0000013

Technician Safety Information (itype_15)

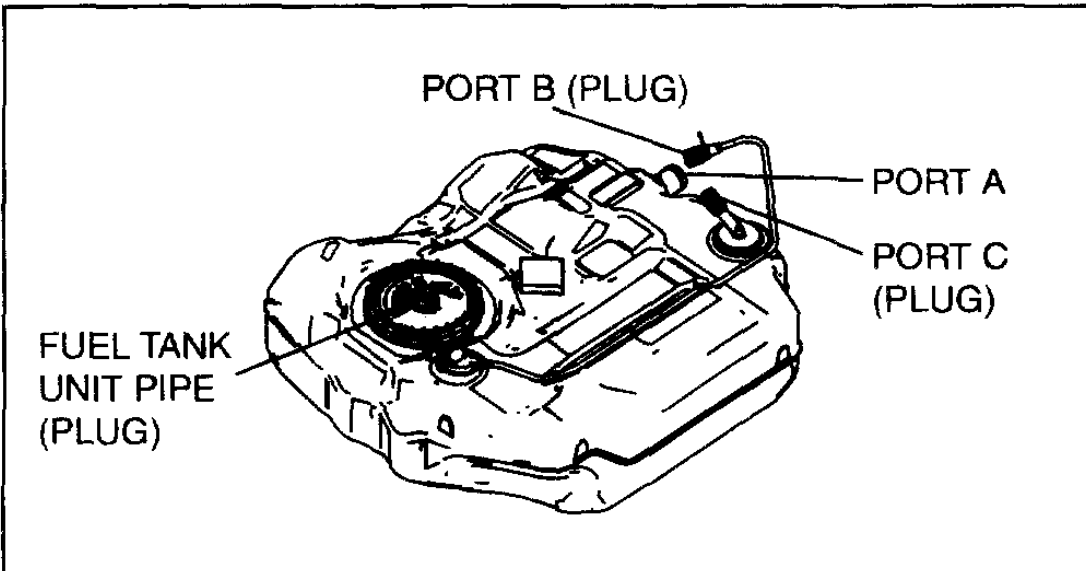
- WARNING: Adhere to the following procedures any time the fuel system is being worked on in order to reduce the risk of fire and personal injury:
- Keep a dry chemical (Class B) fire extinguisher near the work area.
 - Place a "CAUTION FLAMMABLE" sign in the work area.
 - Work in a well-ventilated area. Do not smoke, and keep sparks and open flames away.
 - Wear eye protection.
 - Use caution when working near the catalytic converter to prevent the possibility of burns or fire. (The temperatures within the converter can exceed 537 degrees C (1000 degrees F).)
 - Relieve the fuel system pressure prior to disconnecting fuel system components.
 - Disconnect the negative battery cable except for tests where battery voltage is required.

- Use a suitable container to store or catch fuel.
- Do not replace fuel pipe with fuel hose.
- Plug all disconnected fuel line fittings and hoses.
- After making any fuel system repairs ALWAYS inspect for fuel leaks.

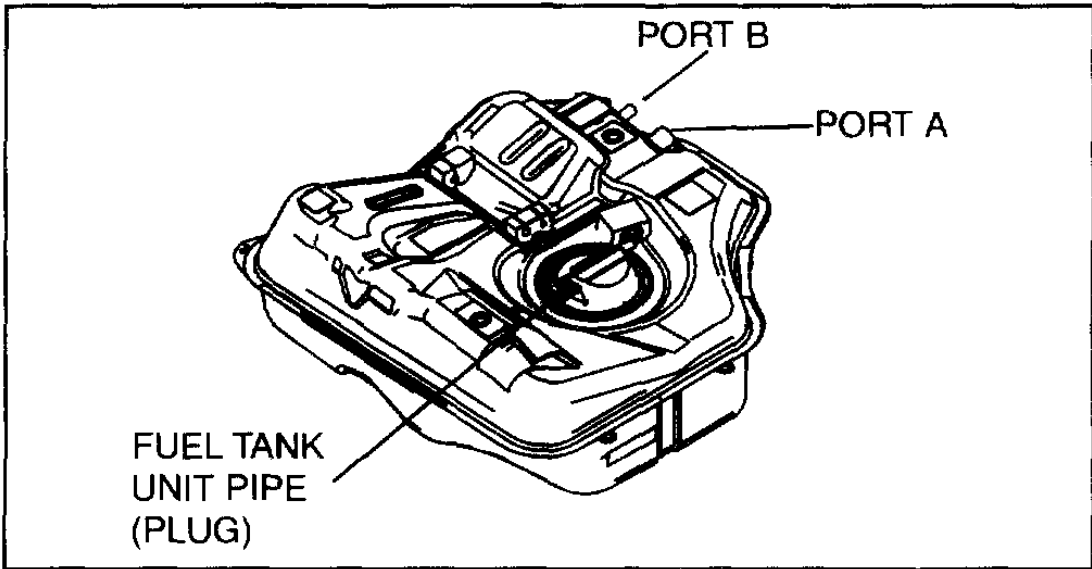
Fuel Tank Inspection (Article 1366774)



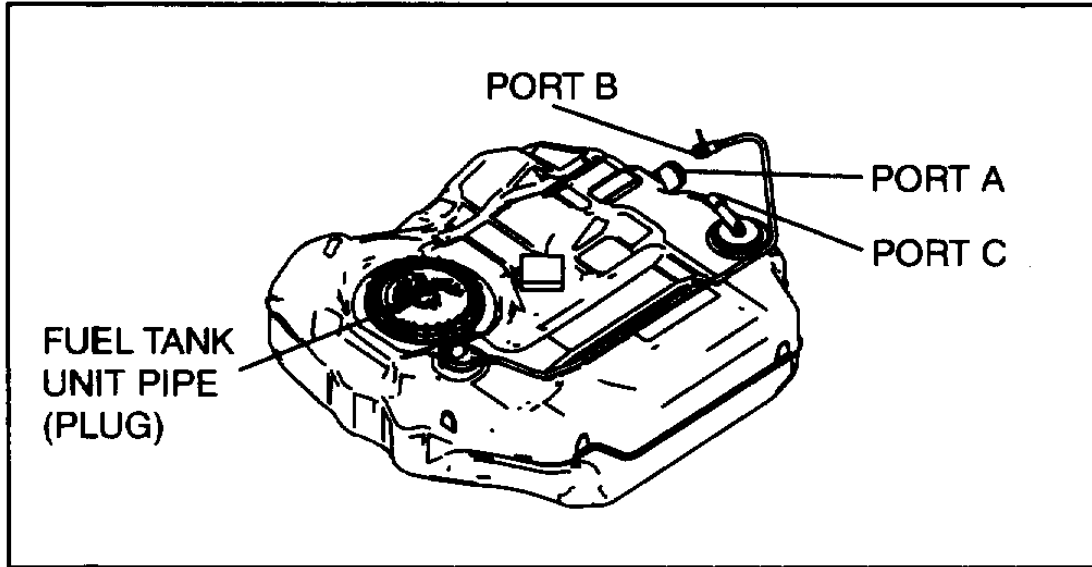
c3u114zw6h01



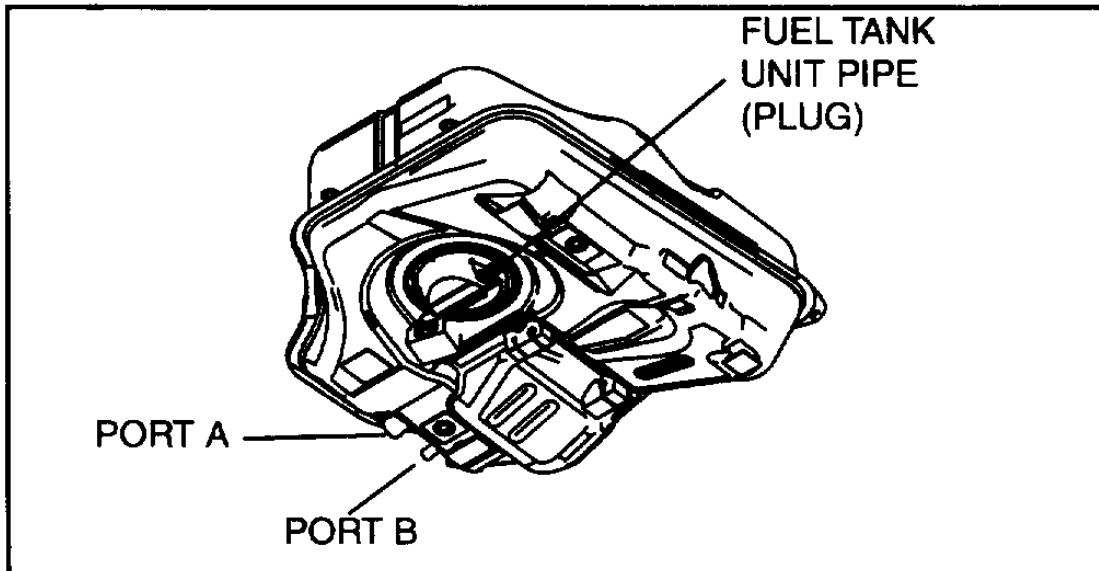
c3u114zw6h02



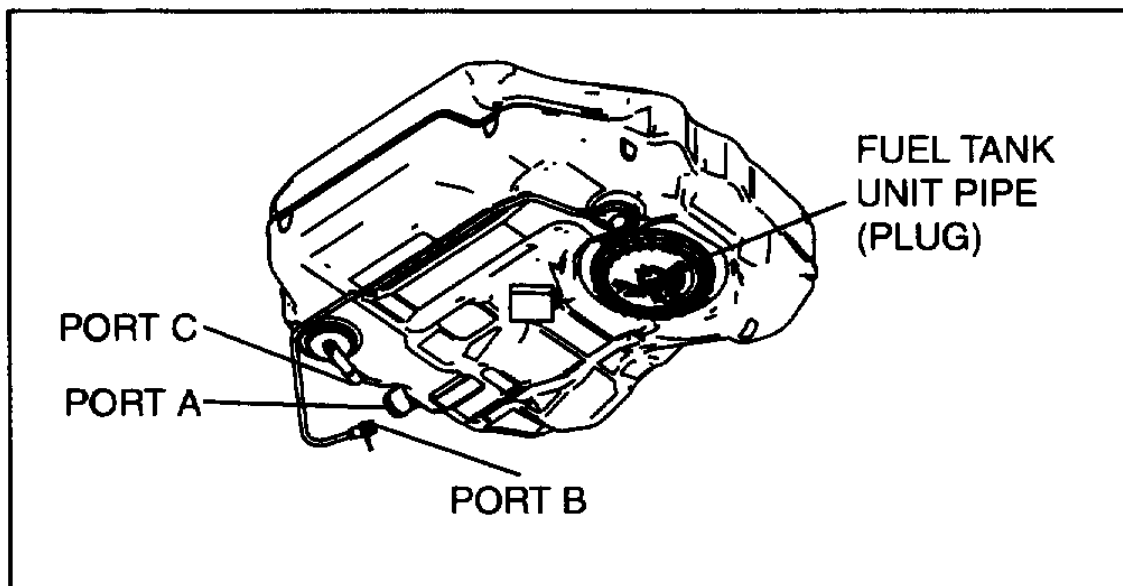
c3u114zw6h03



c3u114zw6h04



c3u114zw6h05



c3u114zw6h06