

Component Procedures: Drive Belt

Table of Contents

1. Parts and Labor (itype_189)
2. Mechanical (itype_22)
3. Drive Belt Replacement (Article 1359097)
4. All Technical Service Bulletins (itype_100)
5. Repair Tips (itype_110)
6. Drive Belt Inspection (Article 1359355)

Component Procedures: Drive Belt

Parts and Labor (itype_189)

Parts

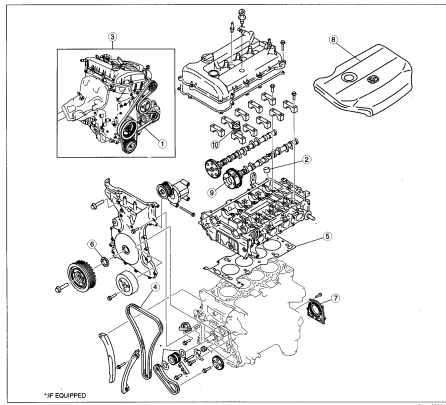
Qualifier	Part #	Name	Price	Note
Serpentine Belt > Manual Tra?	L373159099U	Serpentine Belt	42.29	
Serpentine Belt > Auto Trans	L37215909A9U	Serpentine Belt	39.09	
AC Belt > From 1/1/07	LFY115908	Ac Belt	19.95	

Labor

Operation	Qualifier Path	Skill	Std Hrs	Wty Hrs
Replace	AC Belt	C	0.5	0.0
Replace	Serpentine Belt	C	0.6	0.4

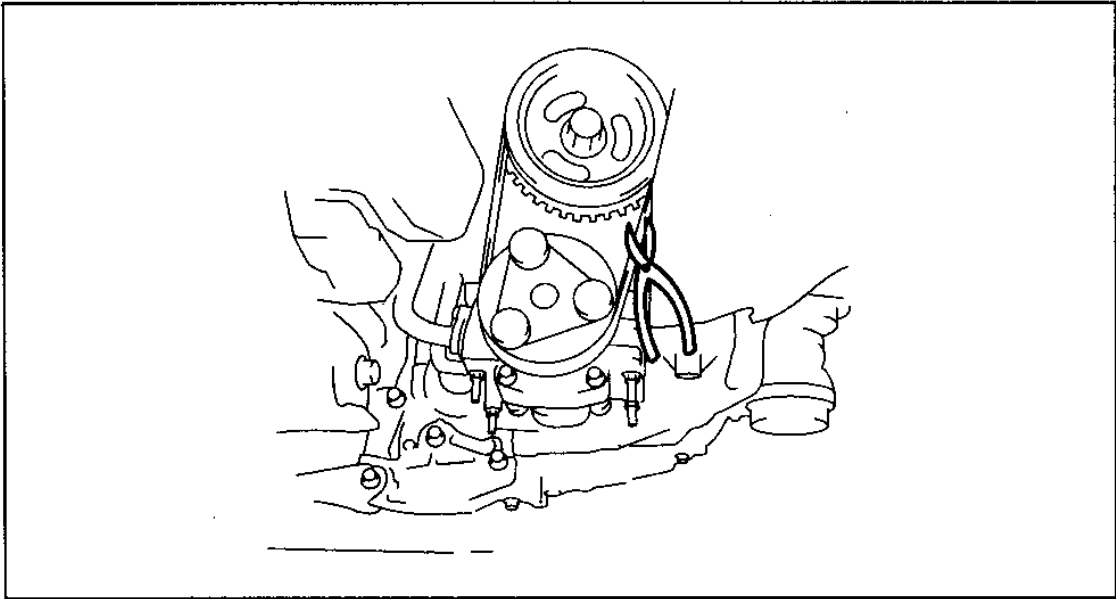
Mechanical (itype_22)

ENGINE LOCATION INDEX [L,F, L3]

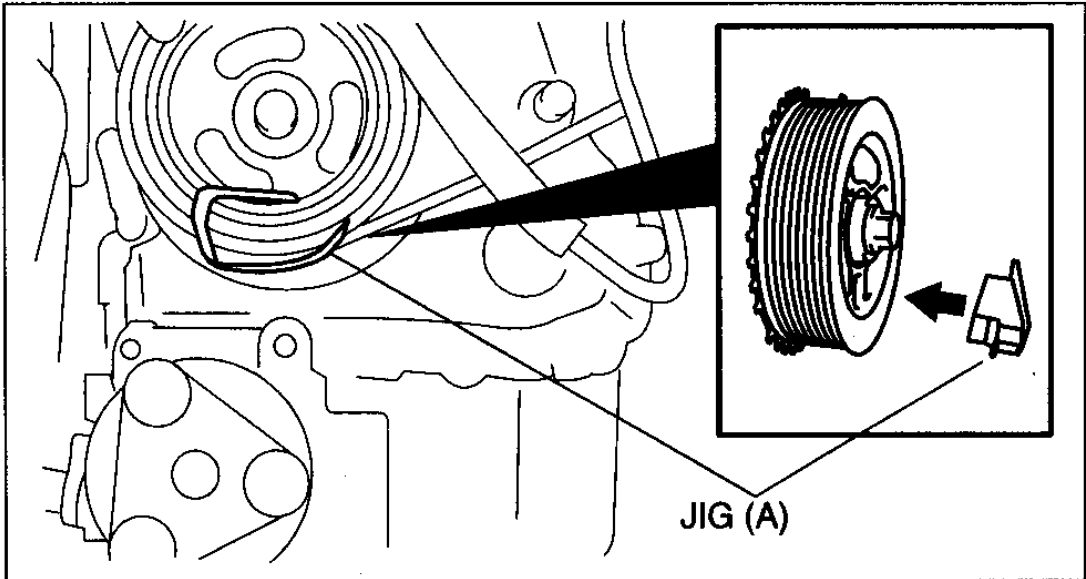


1 Drive belt (See DRIVE BELT INSPECTION [L,F, L3]) (See DRIVE BELT AUTO TENSIONER INSPECTION [L,F, L3])	5 Cylinder head gasket
2 Tappet (See VALVE CLEARANCE INSPECTION [L,F, L3])	6 Front oil seal
3 Engine (See COMPRESSION INSPECTION [L,F, L3])	7 Rear oil seal
4 Timing chain	8 Plug hole plate
	9 Variable valve timing actuator (See VARIABLE VALVE TIMING ACTUATOR INSPECTION [L,F, L3])
	10 Oil control valve (OCV) (See OIL CONTROL VALVE (OCV) INSPECTION [L,F, L3])

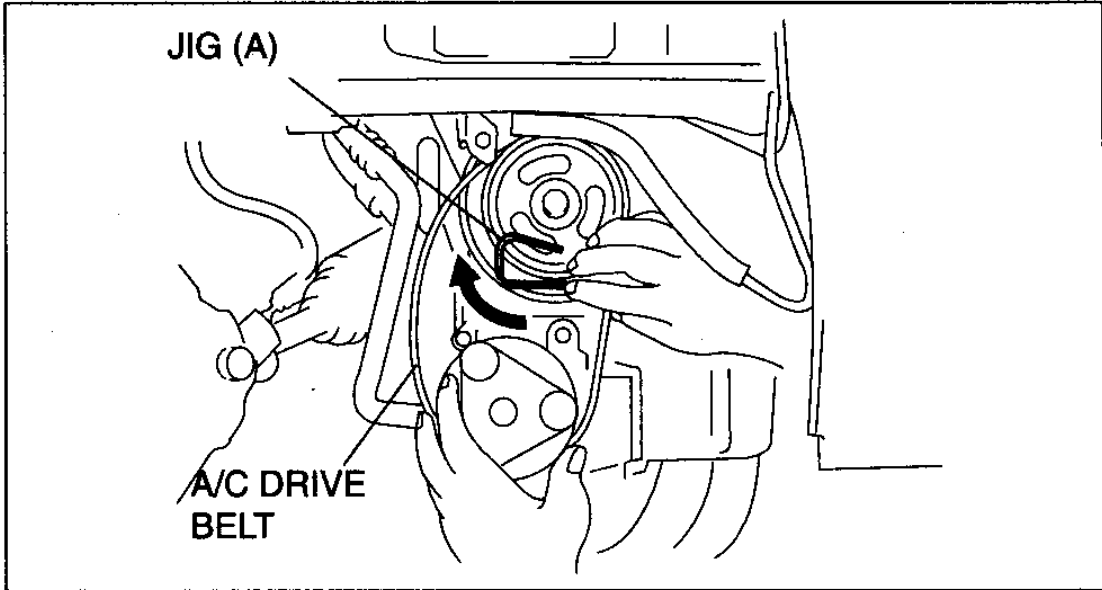
Drive Belt Replacement (Article 1359097)



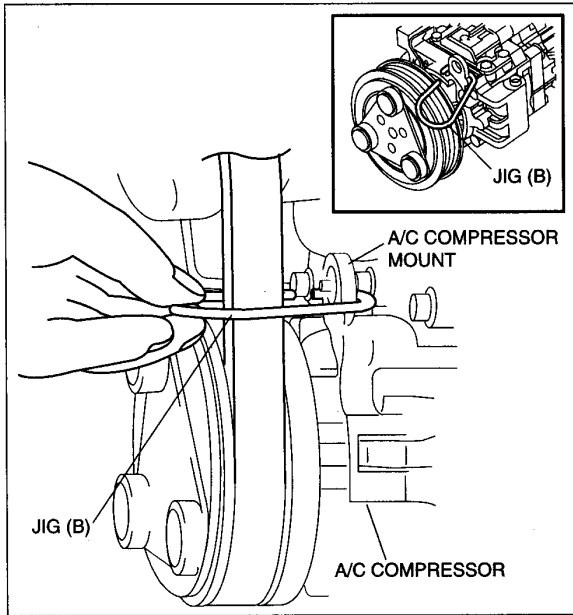
B3E0110W052



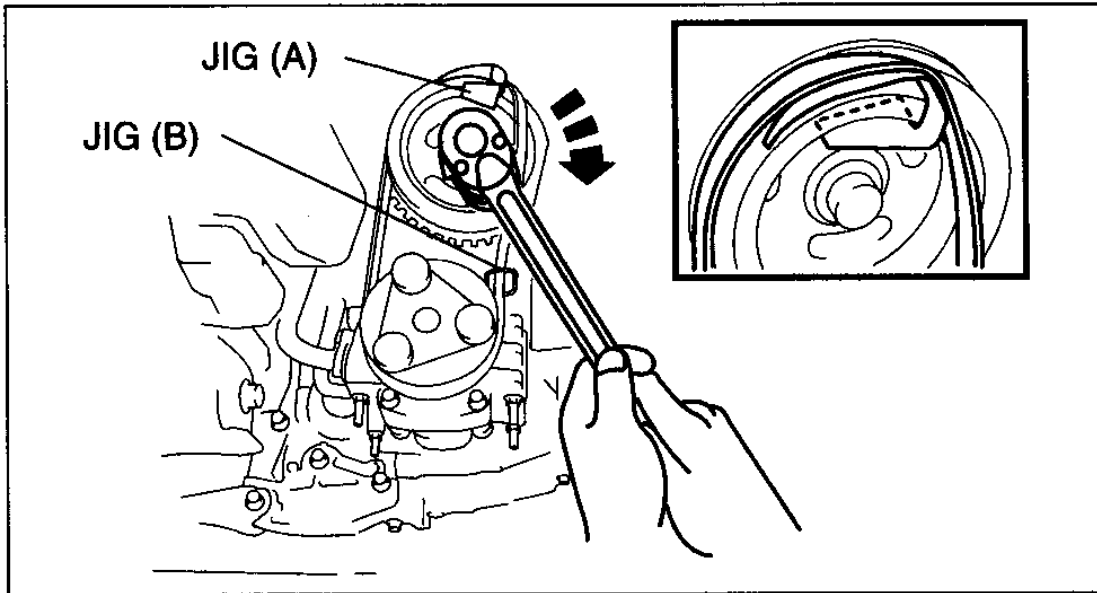
C3U0110W064



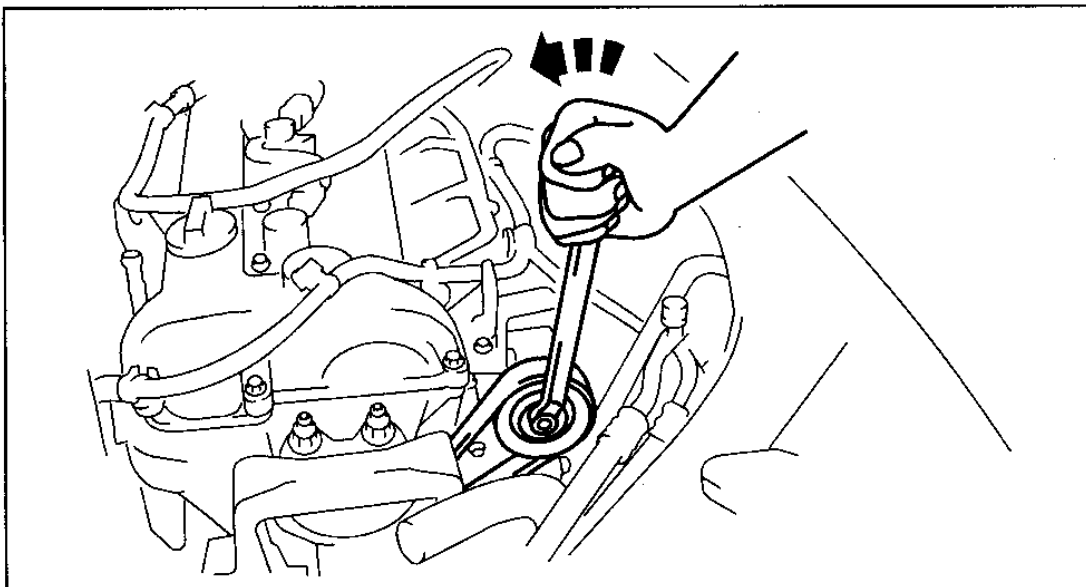
C3U0110W062



C3U0110W065



C3U0110W063



B3E2210W003

All Technical Service Bulletins (itype_100)

Tsbs

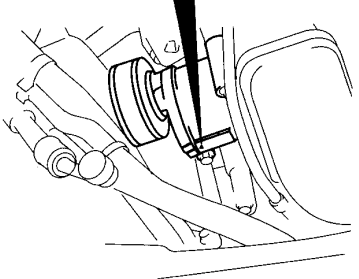
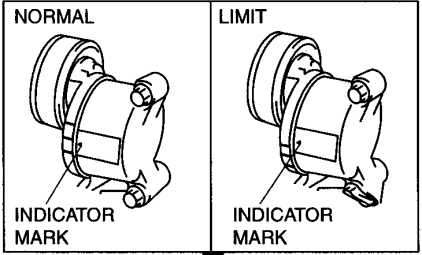
- Engine - Drive Belt Squeal After Driving Through Water (MTIP-08-09-3, 2008/09/01)

Repair Tips (itype_110)

Tsbs

- Engine - Drive Belt Squeal After Driving Through Water (MTIP-08-09-3, 2008/09/01)

Drive Belt Inspection (Article 1359355)



C3U0110W067