

# **Component Procedures: Clutch Disc**

## **Table of Contents**

1. Parts and Labor (itype\_189)
2. Clutch Cover and Disc - Components and Components Location (Article 45232)
3. Clutch Cover and Disc - Repair Procedures (Article 45234)

# Component Procedures: Clutch Disc

## Parts and Labor (itype\_189)

### Parts

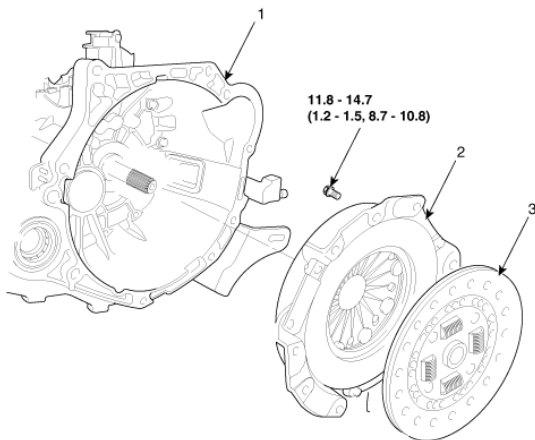
Qualifier	Part #	Name	Price	Note
Manual Transaxle > Clutch & ?	4110032130	Disc	300.18	

### Labor

Operation	Qualifier Path	Skill	Std Hrs	Wty Hrs
Remove & Replace	Manual Transaxle > Clutch & Flywheel > Clutch?	B	5.3	0.0
Remove & Replace	Manual Transaxle > Clutch & Flywheel > Clutch?		0.2	
Remove & Replace	Manual Transaxle > Clutch & Flywheel > Clutch?		0.2	

## Clutch Cover and Disc - Components and Components Location (Article 45232)

- Components



Tightening torque : N.m (kgf.m, lb-ft)

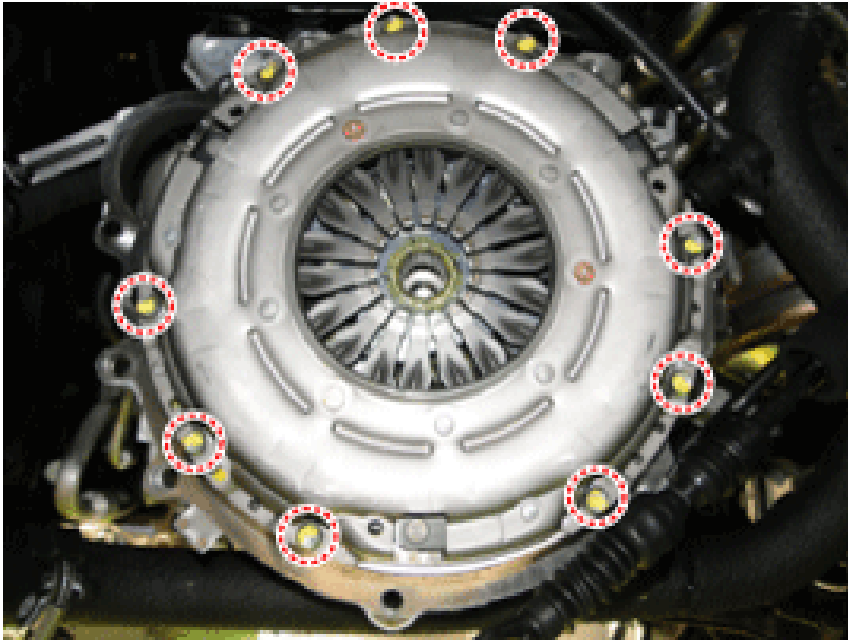
1. Manual transaxle assembly 2. Clutch cover 3. Clutch disc

## Clutch Cover and Disc - Repair Procedures (Article 45234)

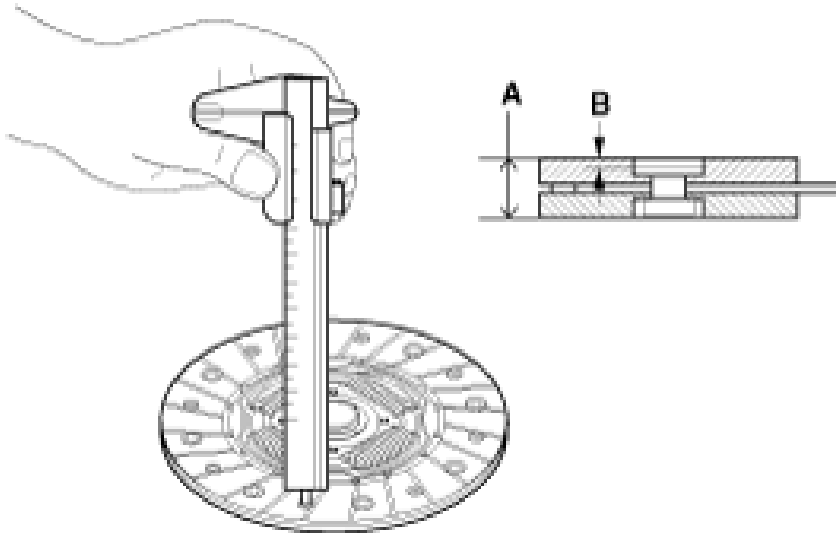
- Removal

- Remove the manual transaxle assembly. (Refer to Manual Transaxle System - "Manual Transaxle")
  - Remove the clutch cover assembly after loosening the bolts. Be careful not to be bent or twist bolts. Loosen bolts in diagonal directions.
- Be careful not to be bent or twist bolts. Loosen bolts in diagonal directions.

# NOTICE



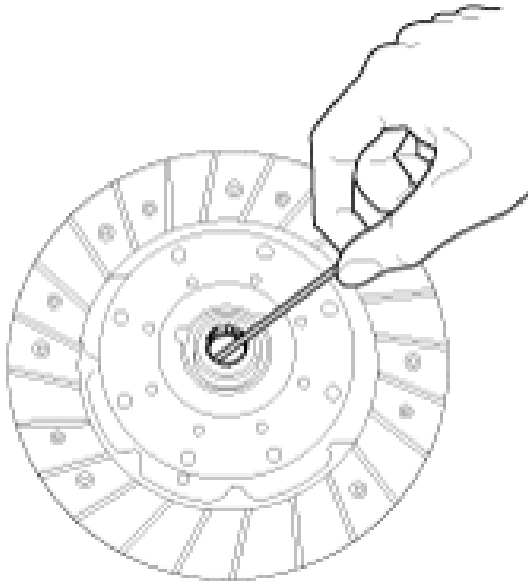
- Inspection
- Inspect diaphragm spring wear which is in contact with a clutch release bearing .
- Check the clutch cover and disc surface for wear or cracks.
- Check the clutch disc lining for slipping or oil marks.
- Measure the depth from a clutch lining surface to a rivet. If the measured value is less than the specification below, replace it. Standard value Clutch disc thickness(A)[when free] :  $8.3 \pm 0.3$  mm ( $0.3268 \pm 0.0118$  in.) Clutch disc rivet depth(B) : 1.1 mm (0.0433 in.) Clutch disc rivet depth (Service standard) : 0.3 mm (0.0118 in.)



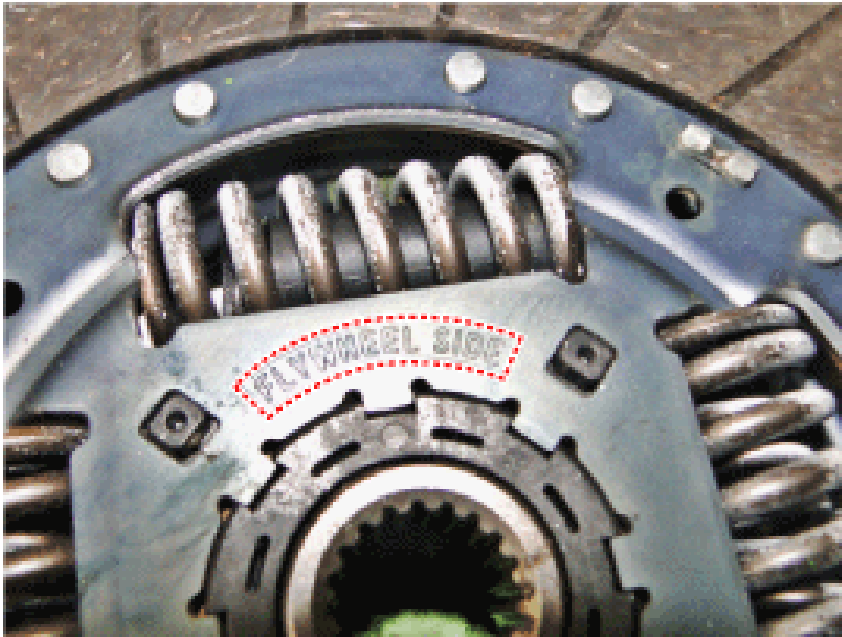
- Installation
- If reinstalling used cover, the cover should be installed with its clutch disc as a set.
- If reinstalling used cover, the cover should be installed with its clutch disc as a set.
- Apply grease on a disc spline part and transaxle input shaft spline part as required. Specified grease: CASMOLY L9508 Amount: 0.2 g When not applying: Excessive wear of splines and bad clutch operation can occur. When excessively applying: Grease can be scattered by centrifugal force which can contaminate the clutch disc. This can cause a loss of friction force causing a slip.
- When not applying: Excessive wear of splines and bad clutch operation can occur. When excessively applying: Grease can be scattered by centrifugal force which can contaminate the clutch disc. This can cause a loss of friction force causing a slip.

# ⚠ CAUTION

- When not applying: Excessive wear of splines and bad clutch operation can occur.
- When excessively applying: Grease can be scattered by centrifugal force which can contaminate the clutch disc. This can cause a loss of friction force causing a slip.



- The ' FLYWHEEL SIDE' marked surface should face the transaxle. Possible problems when the disc is installed in the opposite direction. Transaxle shift error or a strangesound can occur due to clutch separation. The 'FLYWHELL SIDE' marked surface should face the flywheel.
- Possible problems when the disc is installed in the opposite direction. Transaxle shift error or a strangesound can occur due to clutch separation. The 'FLYWHELL SIDE' marked surface should face the flywheel.
- Transaxle shift error or a strangesound can occur due to clutch separation.
- The 'FLYWHELL SIDE' marked surface should face the flywheel.



- Install the clutch disc and the cover with SST (A: 09411-1P000).



- Install the clutch cover bolts. Install the all the components with the specified torques. If not, the clutch torque transaxle may have concerns or the mounting bolt can loosen. When installing the clutch cover assembly, check the below fastening order for each number of bolts and tighten the bolts loosely. Then, fasten the bolts to their proper tightening torque. This can prevent twisting and vibration of the cover, and the lifting of the pressure plate . ■ Fastening order for each number of bolts for installing the clutch cover assembly

Install the all the components with the specified torques. If not, the clutch torque transaxle may have concerns or the mounting bolt can loosen. When installing the clutch cover assembly, check the below fastening order for each number of bolts and tighten the bolts loosely. Then, fasten the bolts to their proper tightening torque. This can prevent twisting and vibration of the cover, and the lifting of the pressure plate . ■ Fastening order for each number of bolts for installing the clutch cover assembly

- Install the all the components with the specified torques. If not, the clutch torque transaxle may have concerns or the mounting bolt can loosen.

- When installing the clutch cover assembly, check the below fastening order for each number of bolts and tighten the bolts loosely. Then, fasten the bolts to their proper tightening torque. This can prevent twisting and vibration of the cover, and the lifting of the pressure plate . ■ Fastening order for each number of bolts for installing the clutch cover assembly

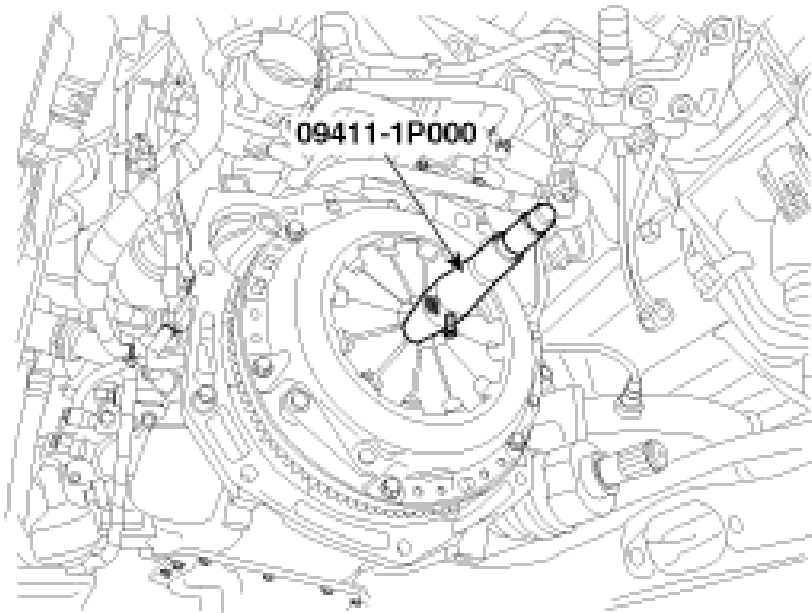


[6 bolts mounting type]



[9 bolts mounting type]

- Remove the clutch disc guide SST (No.: 09411-1P000).



- Install the transaxle assembly. (Refer to Manual Transaxle System - "Manual Transaxle")