

Component Procedures: Clutch Slave Cylinder

Table of Contents

1. Parts and Labor (itype_189)
2. Concentric Slave Cylinder Assembly - Components and Components Location (Article 45250)
3. Concentric Slave Cylinder Assembly - Repair Procedures (Article 45251)

Component Procedures: Clutch Slave Cylinder

Parts and Labor (itype_189)

Parts

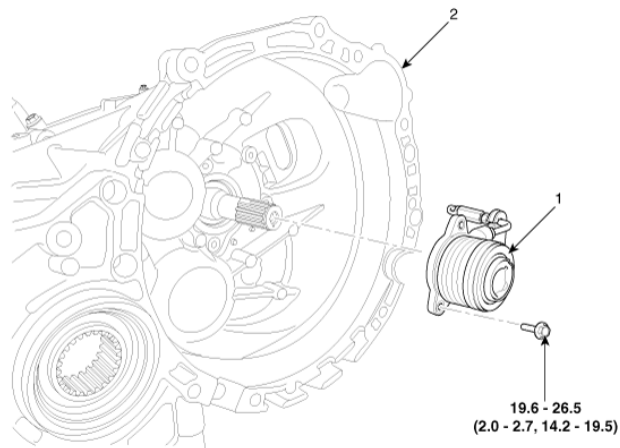
Qualifier	Part #	Name	Price	Note
Manual Transaxle > Hydraulic?	4142132AA1	Slave Cylinder	274.94	

Labor

Operation	Qualifier Path	Skill	Std Hrs	Wty Hrs
Remove & Replace	Manual Transaxle > Hydraulic System > Slave C?	B	0.5	0.0
Overhaul	Manual Transaxle > Hydraulic System > Slave C?	B	0.8	0.0

Concentric Slave Cylinder Assembly - Components and Components Location (Article 45250)

- Components Location



Tightening torque: N.m (kgf.m, lb-ft)

1. Concentric Slave Cylinder assembly (C.S.C) 2. Manual transaxle case

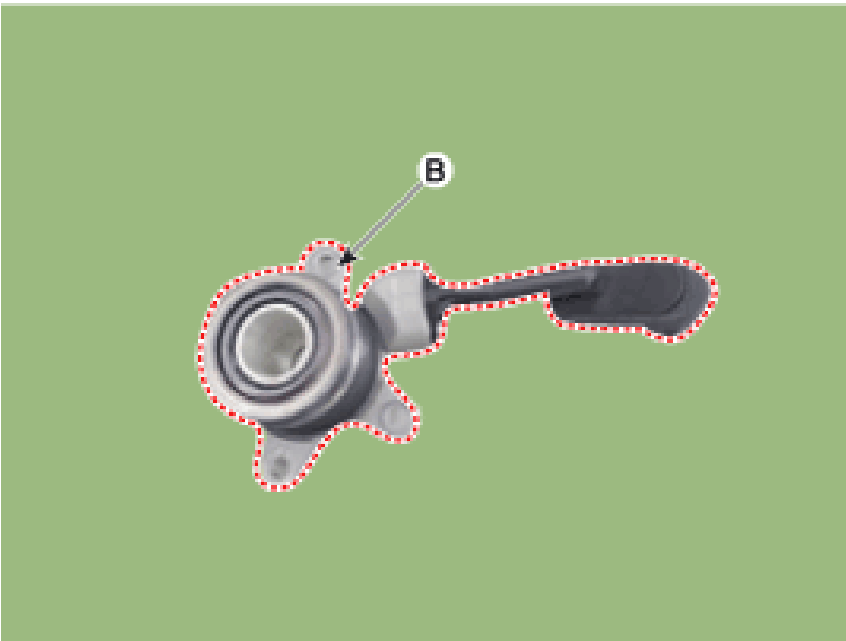
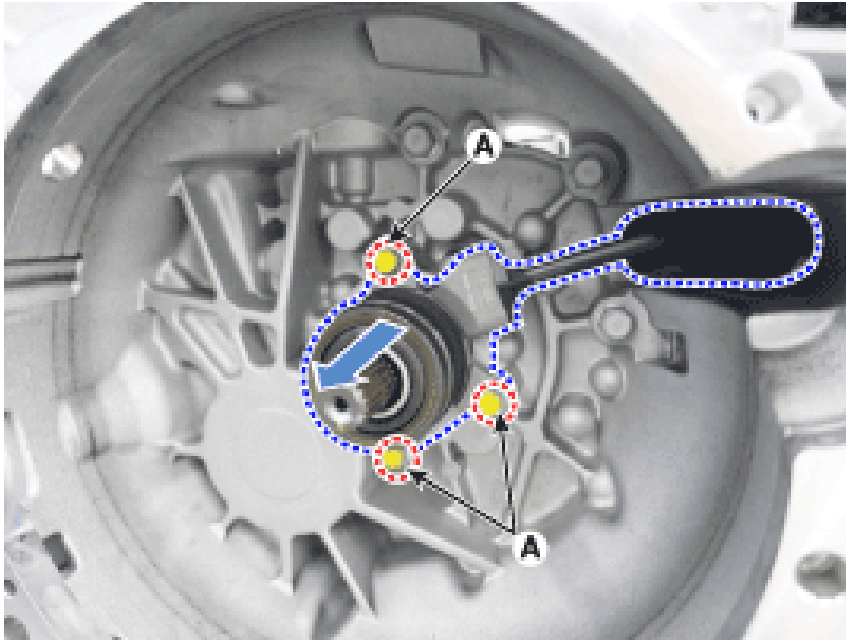
Concentric Slave Cylinder Assembly - Repair Procedures (Article 45251)

- Removal

- Remove the manual transaxle assembly. (Refer to Manual Transaxle System - "Manual Transaxle")

- Remove the concentric slave cylinder assembly (B) from the transaxle case by removing bolts (A). Tightening torque :

19.6 - 26.5 N.m (2.0 - 2.7 kgf.m, 14.2 - 19.5 lb-ft)



- Installation

- To install, reverse the removal procedures. Install the concentric slave cylinder bolts. Not to be bent or twisted, Tighten them in diagonal directions. Cup, Inner surface of body and outer surface of tube guide must be free from flaws. When it is assembled, it must be free from invasive foreign matters and oil leakage. When it is installed, assembly oil must be applied adequately to inner surface of body and outer surface of tube guide. Specified fluid : KLUBER 9R1007

Install the concentric slave cylinder bolts. Not to be bent or twisted, Tighten them in diagonal directions. Cup, Inner surface of body and outer surface of tube guide must be free from flaws. When it is assembled, it must be free from invasive foreign matters and oil leakage.

CAUTION

- Install the concentric slave cylinder bolts. Not to be bent or twisted, Tighten them in diagonal directions.
- Cup, Inner surface of body and outer surface of tube guide must be free from flaws.
- When it is assembled, it must be free from invasive foreign matters and oil leakage.

When it is installed, assembly oil must be applied adequately to inner surface of body and outer surface of tube guide. Specified fluid : KLUBER 9R1007

NOTICE

- When it is installed, assembly oil must be applied adequately to inner surface of body and outer surface of tube guide. Specified fluid : KLUBER 9R1007