

Component Procedures: Power Locks

Table of Contents

1. Power Door Locks - Service Tips (Article 42529)
2. Power Door Locks - Schematic Diagrams (Article 42526)
3. Door Locks (Article 11827)
4. Power Door Lock Module - Components and Components Location (Article 44593)
5. Power Door Locks - Components and Components Location (Article 44592)
6. Power Door Locks - Service Tips (Article 42530)

Component Procedures: Power Locks

Power Door Locks - Service Tips (Article 42529)

Power Door Locks
Service Tips (1)

Circuit Description

Constant power is supplied to the door lock/unlock relay via a 20A fuse. And door lock/unlock relay is controlled by the IPS control module. When user press forward the door lock part (Door Lock) of the power window main switch or passenger power window switch, the IPS control module receives the signal and the magnetizes the door lock relay coil to apply the power to the door lock relay switch. And then door is locked by actuators. On the other hand, when user pulls back the door lock switch (Door Unlock), the IPS control module receives the signal and magnetizes the door unlock relay coil to apply the power to the door unlock relay switch. And then door is unlocked by actuators.

■ **Power Window Main Switch (Door Lock Switch) Inspection**

Check the continuity between terminals from each switch position as shown in the table below.

Position	Terminal	6(5)	5(6)	10(12)
Lock		○		○
Unlock			○	○

■ () : Passenger

■ **Front Door Key Lock Switch Inspection**

Check the continuity between terminals from each switch position while insert key and turn as shown in the table below.

Position	Terminal	4	5	2	3
Front LH Lock		○			○
Front LH Unlock			○	○	○
Front RH Lock		○			○
Front RH Unlock			○	○	○

■ **Rear Door Lock Switch Inspection**

Check the continuity between terminals from each switch position as shown in the table below.

Position	Terminal	2	3
Rear LH Unlock		○	○
Rear RH Unlock		○	○

■ **Door Lock Actuator Inspection**

Apply battery power to each terminal of the door lock actuator and check if it operates normally.

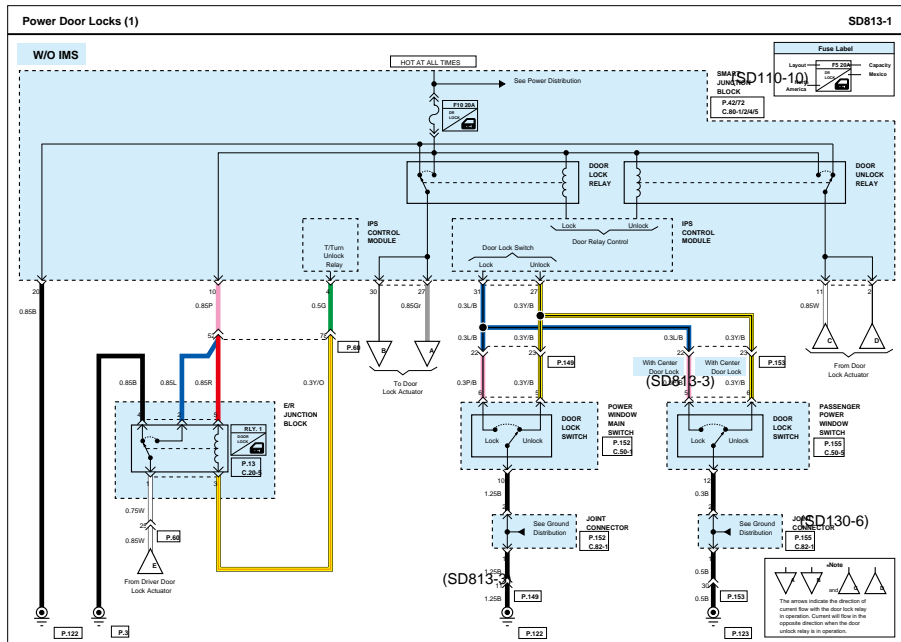
Position	Terminal	6	7
Front LH/ Rear LH Lock		⊕	⊖
Front LH/ Rear LH Unlock		⊖	⊕
Front RH/ Rear RH Lock		⊕	⊖
Front RH/ Rear RH Unlock		⊖	⊕

■ **Two Turn Unlock (RLY. 1)**

From the driver's door, turn the key to the right once to unlock the driver's door and once more within 4 seconds to unlock all doors.

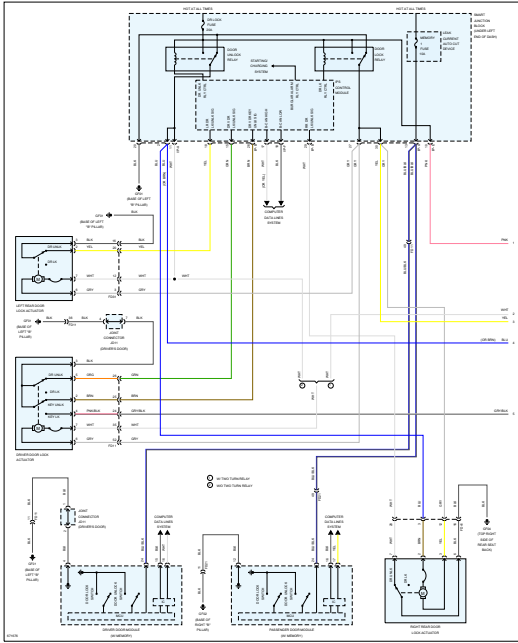
F10

Power Door Locks - Schematic Diagrams (Article 42526)

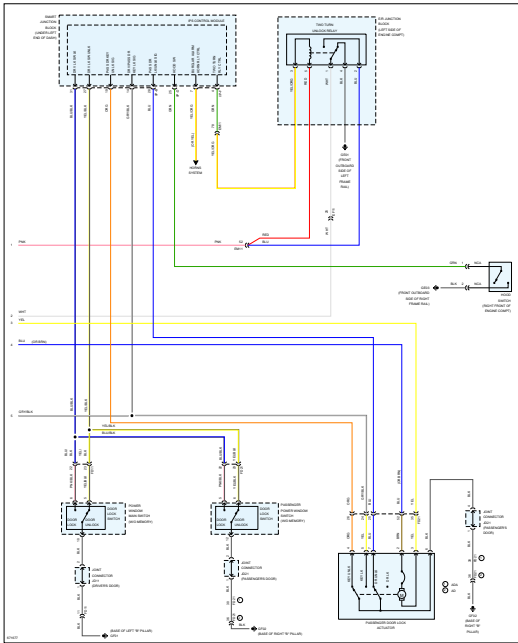


(SD813-3)

(SD130-7)

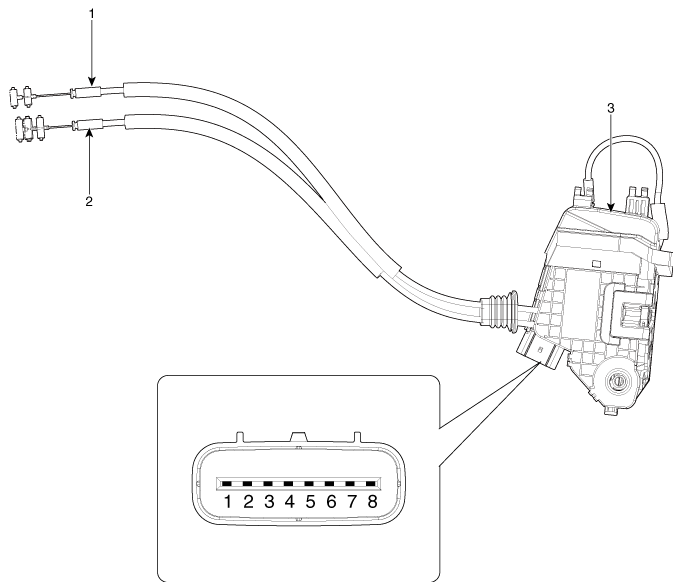


Page 2 of 2



Power Door Lock Module - Components and Components Location (Article 44593)

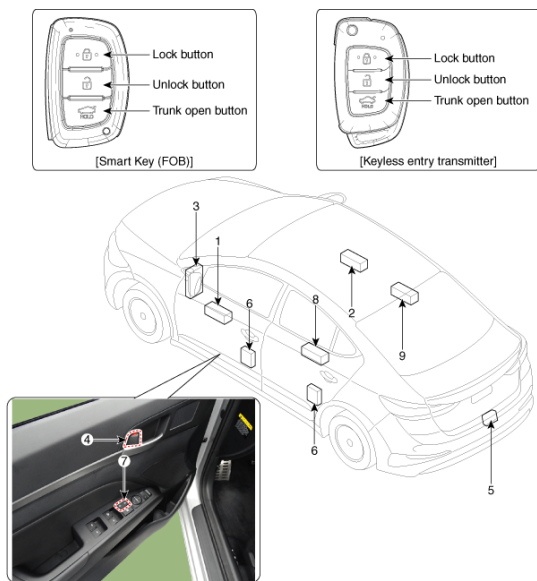
- Components



1. Door lock/unlock knob cable 2. Door inside handle cable 3. Door Latch

Power Door Locks - Components and Components Location (Article 44592)

- Component Location



1. DDM (Driver Door Module) 2. ADM (Assist Door Module) 3. SJB (Smart Junction Block) 4. Door lock knob 5. Trunk lid actuator 6. Door latch module 7. Door lock/ unlock switch 8. RLDM (Rear Left Door Module) 9. RRDM (Rear Right Door Module)

Power Door Locks - Service Tips (Article 42530)

Circuit Description

Constant power is supplied to the door lock/unlock relay via a 20A fuse. And door lock/unlock relay is controlled by the IPS control module. When user press forward the door lock part (Door Lock) of the power window main switch or passenger power window switch, the IPS control module receives the signal and the magnetizes the door lock relay coil to apply the power to the door lock relay switch. And then door is locked by actuators. On the other hand, when user pulls back the door lock switch (Door Unlock), the IPS control module receives the signal and magnetizes the door unlock relay coil to apply the power to the door unlock relay switch. And then door is unlocked by actuators.

Power Window Main Switch (Door Lock Switch) Inspection

Check the continuity between terminals from each switch position as shown in the table below.

Position	Terminal	6(5)	5(6)	10(12)
Lock		○		○
Unlock			○	○

■ () : Passenger

Front Door Key Lock Switch Inspection

Check the continuity between terminals from each switch position while insert key and turn as shown in the table below.

Position	Terminal	4	5	2	3
Front LH	Lock	○			○
	Unlock		○	○	○
Position	Terminal	6	7	4	5
Front RH	Lock	○			○
	Unlock	○	○	○	

Rear Door Lock Switch Inspection

Check the continuity between terminals from each switch position as shown in the table below.

Position	Terminal	2	3
Rear LH	Unlock	○	○
Position	Terminal	7	6
Rear RH	Unlock	○	○

Door Lock Actuator Inspection

Apply battery power to each terminal of the door lock actuator and check if it operates normally.

Position	Terminal	6	7
Front LH/ Rear LH	Lock	⊕	⊖
	Unlock	⊖	⊕
Position	Terminal	3	2
Front RH/ Rear RH	Lock	⊕	⊖
	Unlock	⊖	⊕

Two Turn Unlock (RLY. 1)

From the driver's door, turn the key to the right once to unlock the driver's door and once more within 4 seconds to unlock all doors.