

Component Procedures: Ignition Coil

Table of Contents

1. Parts and Labor (itype_189)
2. Ignition Coil - Description and Operation (Article 44014)
3. Ignition Coil - Schematic Diagrams (Article 44017)
4. Ignition Coil - Repair Procedures (Article 44019)
5. Ignition Coil - Specifications (Article 44015)
6. Ignition Coil - Troubleshooting (Article 44016)

Component Procedures: Ignition Coil

Parts and Labor (itype_189)

Parts

Qualifier	Part #	Name	Price	Note
Ignition System	273002E601	Ignition Coil	138.94	

Labor

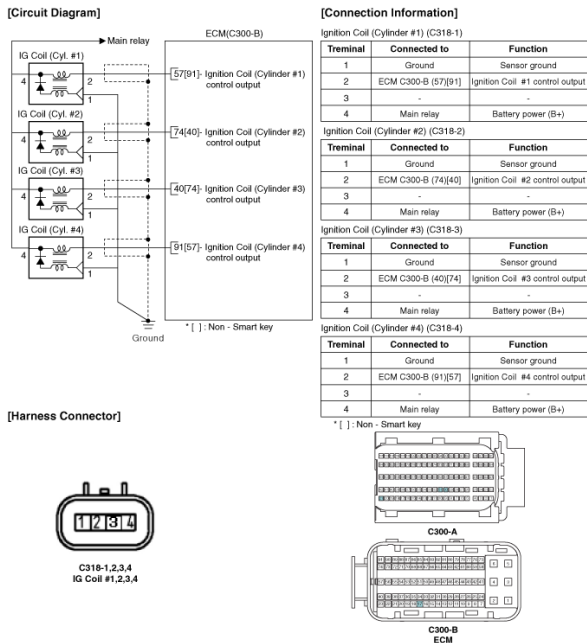
Operation	Qualifier Path	Skill	Std Hrs	Wty Hrs
Remove & Replace	Ignition System > Ignition Coil, R&R > All	B	0.7	0.0
Remove & Replace	Ignition System > Ignition Coil, R&R > One	B	0.4	0.0

Ignition Coil - Description and Operation (Article 44014)

- Description

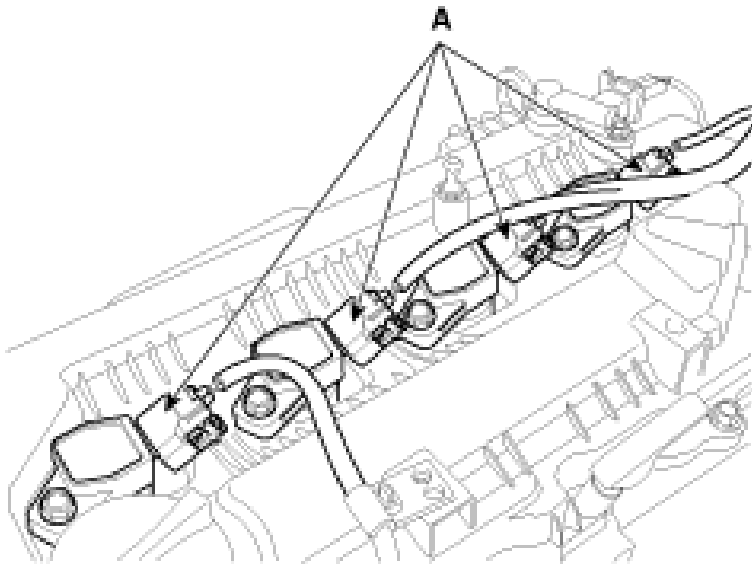
Ignition Coil - Schematic Diagrams (Article 44017)

- Circuit Diagram



Ignition Coil - Repair Procedures (Article 44019)

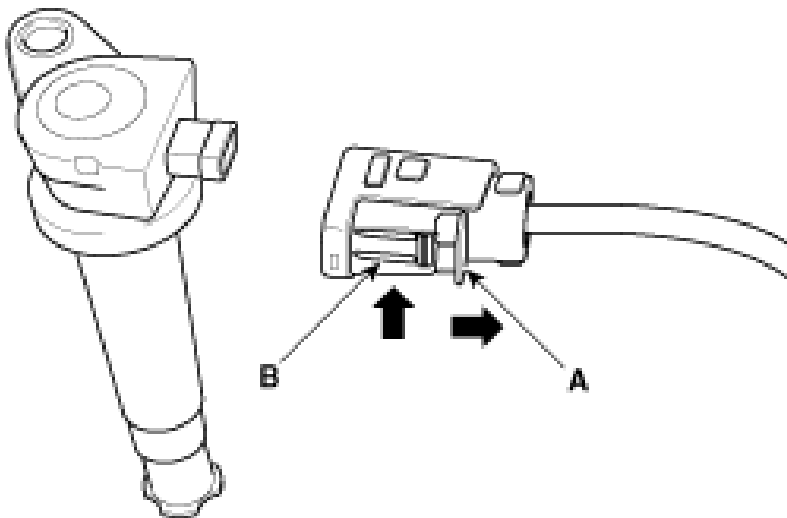
- Removal
- Turn ignition switch OFF and disconnect the negative (-) battery cable.
- Remove the engine cover.
- Disconnect the ignition coil connector (A). When removing the ignition coil connector, pull the lock pin (A) and push the clip (B).



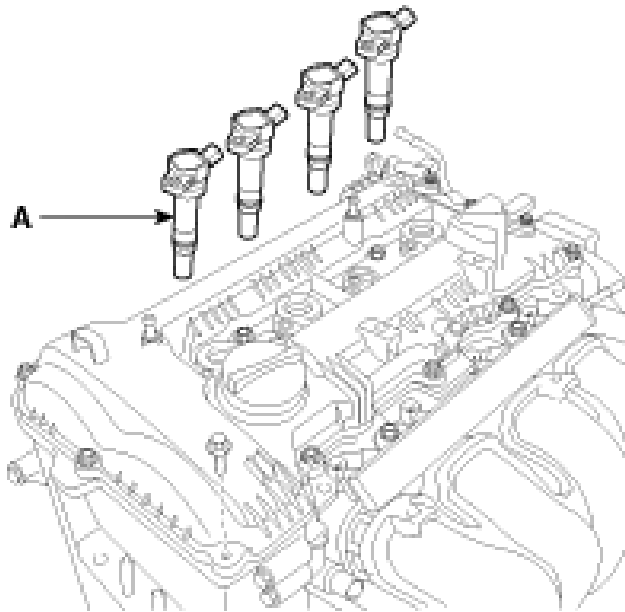
When removing the ignition coil connector, pull the lock pin (A) and push the clip (B).

NOTICE

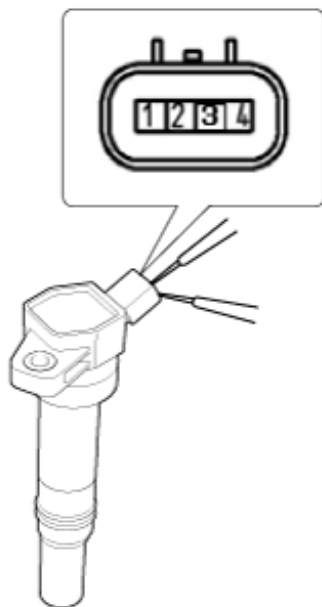
- When removing the ignition coil connector, pull the lock pin (A) and push the clip (B).



- Remove the ignition coil (A).



- Installation
- Install in the reverse order of removal. Ignition coil installation bolts : 9.8 - 11.8 N.m (1.0 - 1.2 kgf.m, 7.2 - 8.7 lb-ft)
- Inspection
- Measure the primary coil resistance between terminals 1 and 2. Standard value : $0.61\Omega \pm 15\%$

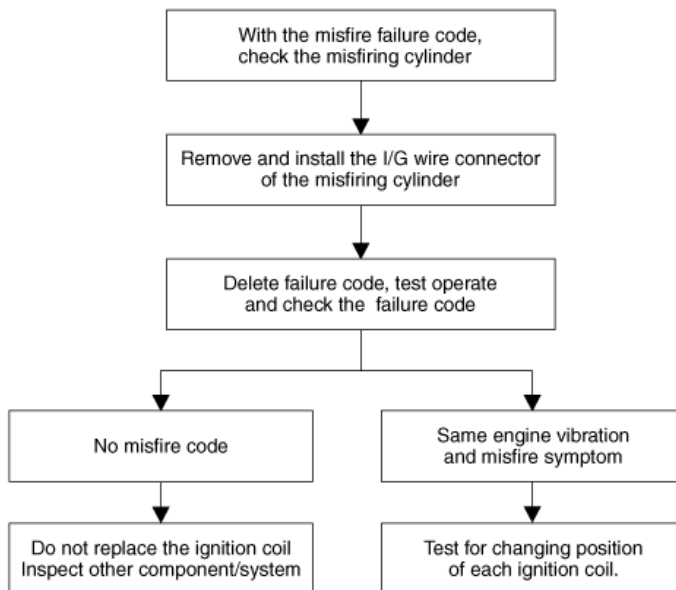
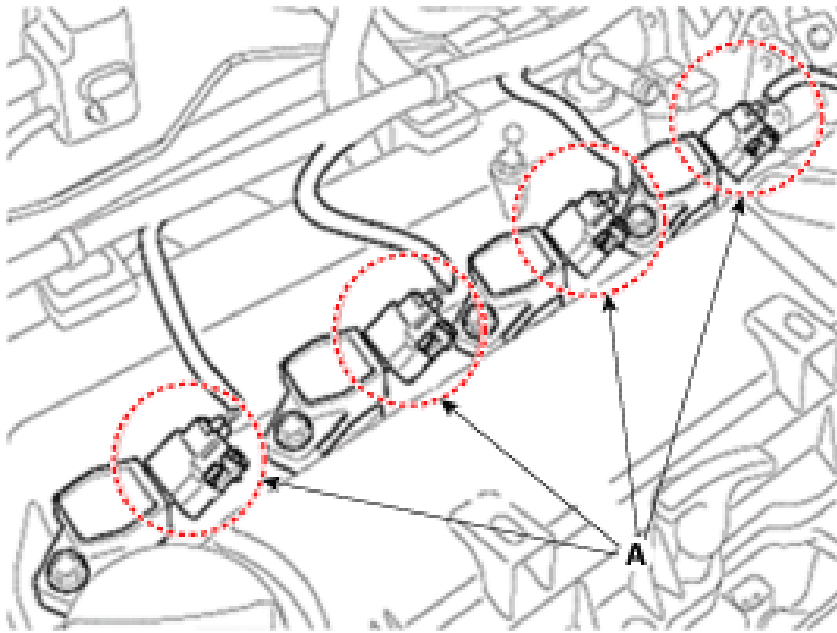


Ignition Coil - Specifications (Article 44015)

- Specification
- Item Specification
- Primary Coil Resistance (Ω) $0.61 \pm 15\%$ [20°C (68°F)]
- Secondary Coil Resistance ($k\Omega$) $7.5 \pm 15\%$ [20°C (68°F)]

Ignition Coil - Troubleshooting (Article 44016)

- Troubleshooting
- Connector assembly status test
- Remove the connector (A) and reinstall it.



Test for changing position of each ignition coil
Do not move with spark plug at the same time (move the ignition coil only)

NOTICE

- Do not move with spark plug at the same time (move the ignition coil only)

