

Component Procedures: Cabin Air Filter / Purifier

Table of Contents

1. Parts and Labor (itype_189)
2. Climate Control Air Filter - Description and Operation (Article 44880)
3. Cluster Ionizer - Description and Operation (Article 44838)
4. Cluster Ionizer - Components and Components Location (Article 44837)
5. Climate Control Air Filter - Repair Procedures (Article 44881)
6. Cluster Ionizer - Repair Procedures (Article 44839)

Component Procedures: Cabin Air Filter / Purifier

Parts and Labor (itype_189)

Parts

| Qualifier | Part # | Name | Price | Note |
|--------------|------------|------------------|-------|------|
| Blower Motor | F2H79AK000 | Cabin Air Filter | 37.77 | |

Labor

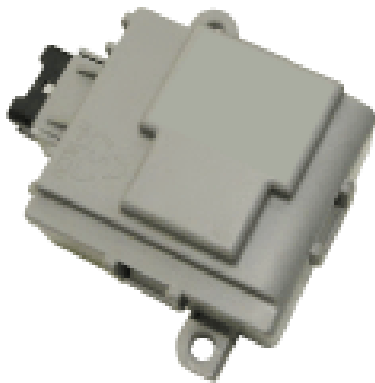
| Operation | Qualifier Path | Skill | Std Hrs | Wty Hrs |
|------------------|--------------------------------------|-------|---------|---------|
| Remove & Replace | Blower Motor > Cabin Air Filter, R&R | B | 0.3 | 0.0 |

Climate Control Air Filter - Description and Operation (Article 44880)

- Description

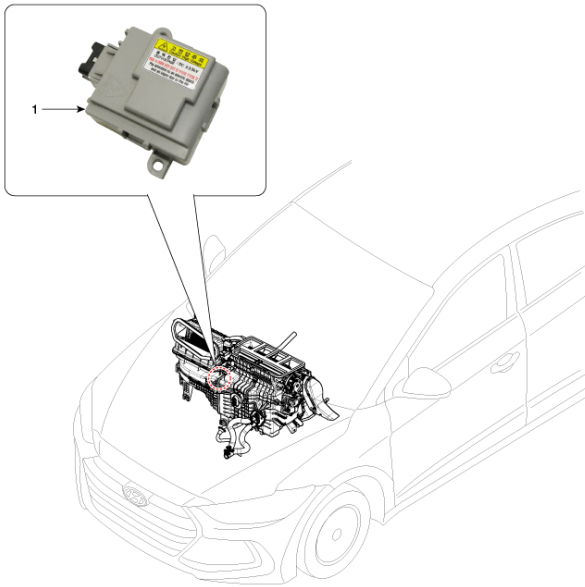
Cluster Ionizer - Description and Operation (Article 44838)

- Description



Cluster Ionizer - Components and Components Location (Article 44837)

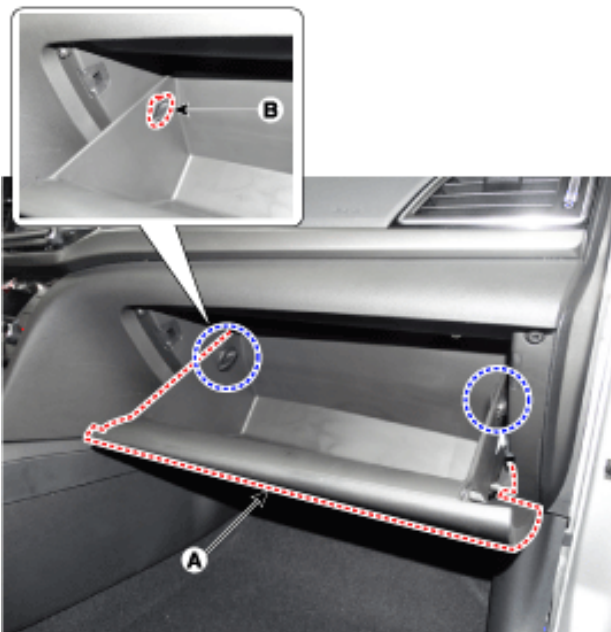
- Components Location



1. Cluster Ionizer

Climate Control Air Filter - Repair Procedures (Article 44881)

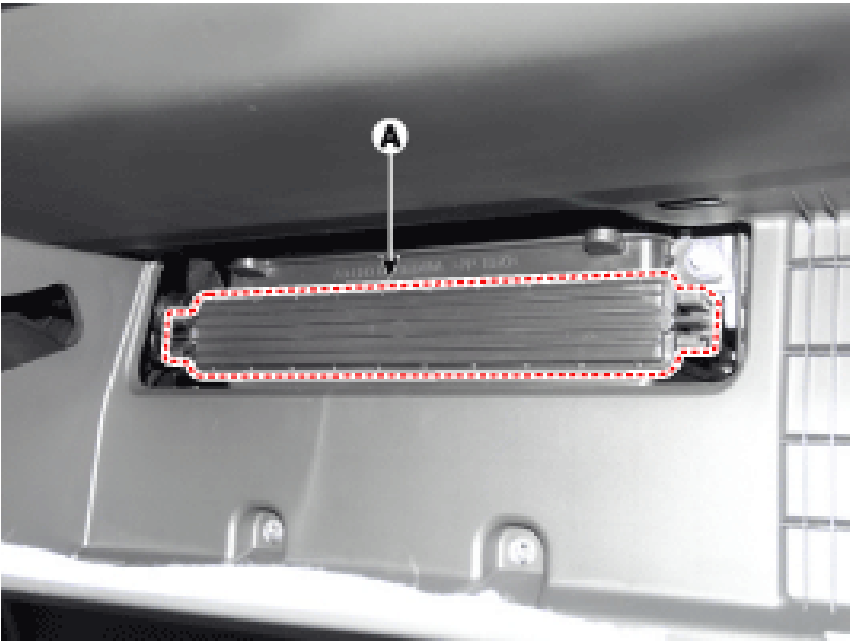
- Replacement
- Remove the stopper (B) from the glove box (A).



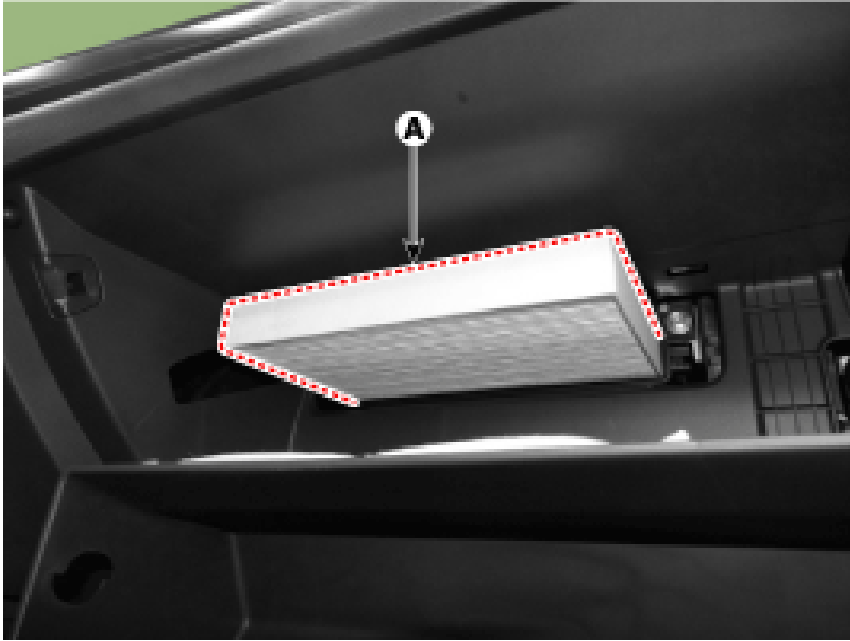
- Disconnect the air damper (A) from the glove box (B).



- Remove the filter cover (A) by pressing the knob.



- Replace the air filter (A) with a new one according to the direction of air filter. To remove the filter easily, press the right side inward then pull out the filter. In case of driving in an air-polluted area or rugged terrain, check and replace the air filter as frequently as possible.



To remove the filter easily, press the right side inward then pull out the filter. In case of driving in an air-polluted area or rugged terrain, check and replace the air filter as frequently as possible.

NOTICE

- To remove the filter easily, press the right side inward then pull out the filter.
- In case of driving in an air-polluted area or rugged terrain, check and replace the air filter as frequently as possible.
- To install, reverse the removal procedure.

Cluster Ionizer - Repair Procedures (Article 44839)

- Inspection
 - Press the MODE switch more than 4 times within 2 seconds while pressing the OFF switch. Display Fail description 00 Normal 51 Cluster ion generator fault * For diagnostic procedure, refer to DTC guide.
- Display Fail description
00 Normal
51 Cluster ion generator fault
- Diagnosis With GDS
 - The heating, ventilation and air conditioning can be quickly diagnosed failed parts with vehicle diagnostic system(GDS). ■ The diagnostic system(GDS) provides the following information. (1) Self diagnosis : Checking the failure code (DTC) and display. (2) Current data : Checking the system input/output data state. (3) Actuation test : Checking the system operation condition. (4) Additional function : Other controlling such as the system option and zero point adjustment.
 - Select the 'Car model' and the system to be checked in order to check the vehicle with the tester.
 - Select the 'Current data' menu to search the current state of the input/output data. The input/output data for the sensors corresponding to the Cluster Ionizer can be checked.

