

Component Procedures: Seat Occupant Sensor

Table of Contents

1. Parts and Labor (itype_189)
2. Occupant Classification System (OCS) - Description and Operation (Article 44915)
3. Occupant Classification System (OCS) - Components and Components Location (Article 44914)
4. Occupant Classification System (OCS) - Repair Procedures (Article 44916)

Component Procedures: Seat Occupant Sensor

Parts and Labor (itype_189)

Labor

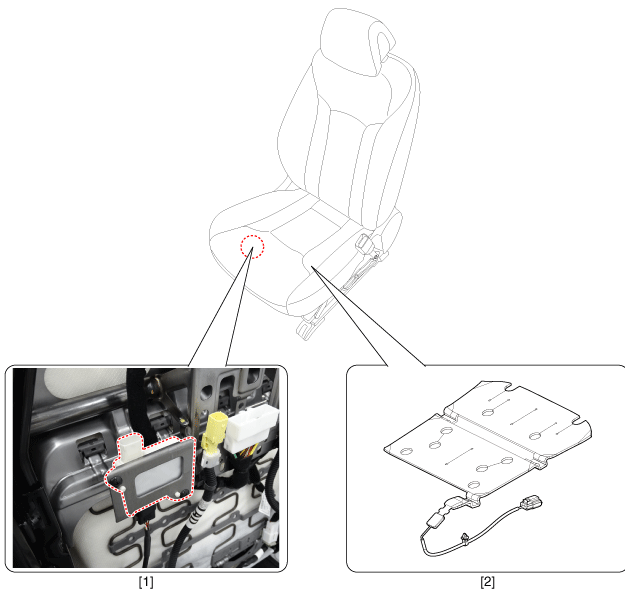
Operation	Qualifier Path	Skill	Std Hrs	Wty Hrs
Remove & Replace	Supplemental Restraint System > Passenger Dis?	B	1.1	0.0

Occupant Classification System (OCS) - Description and Operation (Article 44915)

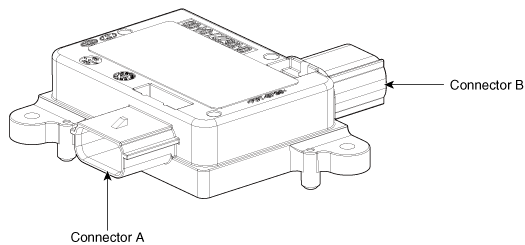
- Description

Occupant Classification System (OCS) - Components and Components Location (Article 44914)

- Components



1. Occupant Classification System (OCS) Unit 2. Occupant Classification System (OCS) Sensor
Occupant Classification System (OCS) Unit



Connector A		Connector B	
Pin	Description	Pin	Description
1	Guard 1	1	C-CAN (High)
2	Sensor 1	2	C-CAN (Low)
3	-	3	Ignition 1
4	Sensor 2	4	Ground
5	Shield ground		
6	Guard 2		

Occupant Classification System (OCS) - Repair Procedures (Article 44916)

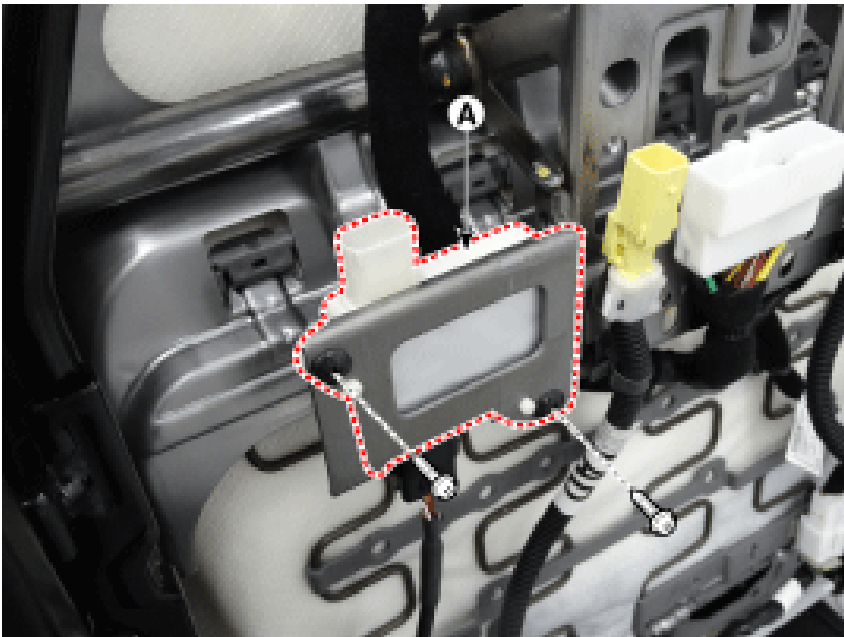
- Removal

Occupant Classification System (OCS) Unit

- Disconnect the battery negative cable, and wait for at least three minutes before beginning work.
- Remove the front passenger seat assembly. (Refer to Body - "Front Seat Assembly")
- Disconnect the occupant classification system unit connector (A).



- Remove the occupant classification system unit (A) after loosening the mounting screws.



Occupant Classification System (OCS) Sensor

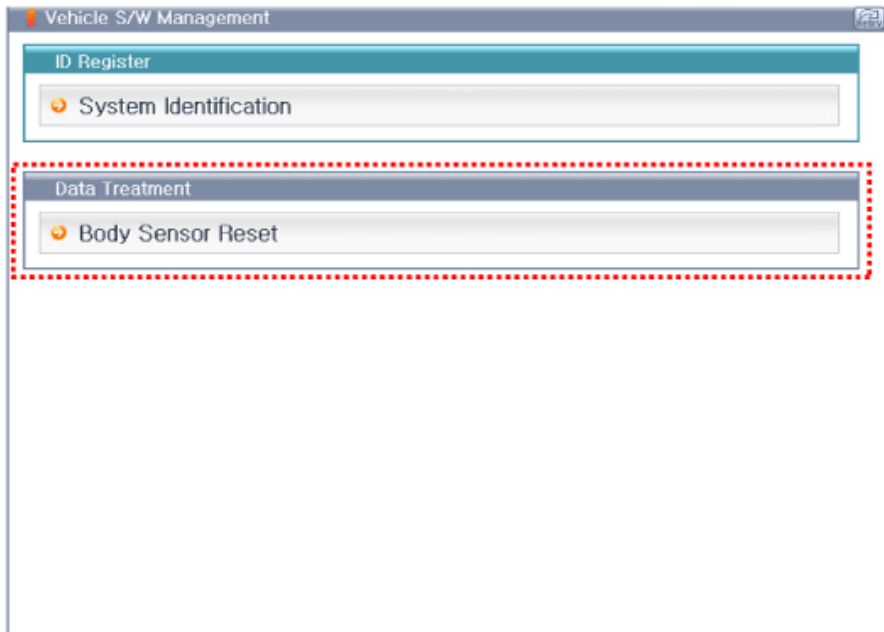
- Remove the front seat cushion assembly.
- Installation
- Install the occupant classification system unit on the Front seat track assembly.
- Connect the occupant classification system unit connector.
- Install the front passenger seat assembly. (Refer to Body - "Front Seat Assembly")
- Reconnect the battery negative cable.
- After installing the occupant classification system, confirm proper system operation. Turn the ignition switch ON the SRS indicator should be turned on for about six seconds and then go off. Telltale lamp will turn on for 4 seconds and be turned off for 3 seconds. After the 7 seconds, it shall remain off if the OCS does not require suppression and the passenger airbag is enabled. Be sure to perform OCS reset with GDS after replacing

OCS unit.

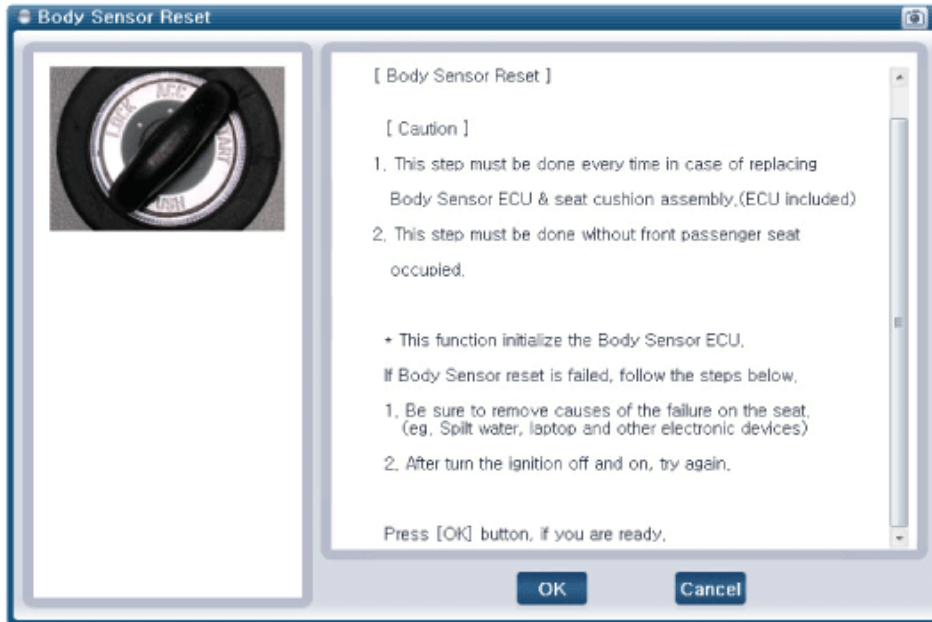
Turn the ignition switch ON the SRS indicator should be turned on for about six seconds and then go off. Telltale lamp will turn on for 4 seconds and be turned off for 3 seconds. After the 7 seconds, it shall remain off if the OCS does not require suppression and the passenger airbag is enabled. Be sure to perform OCS reset with GDS after replacing OCS unit.

NOTICE

- Turn the ignition switch ON the SRS indicator should be turned on for about six seconds and then go off.
- Telltale lamp will turn on for 4 seconds and be turned off for 3 seconds. After the 7 seconds, it shall remain off if the OCS does not require suppression and the passenger airbag is enabled.
- Be sure to perform OCS reset with GDS after replacing OCS unit.
- OCS Reset procedure
- Ignition "OFF", connect GDS.
- Ignition "ON" & Engine "OFF", select Airbag system and "Body Sensor Reset" mode.



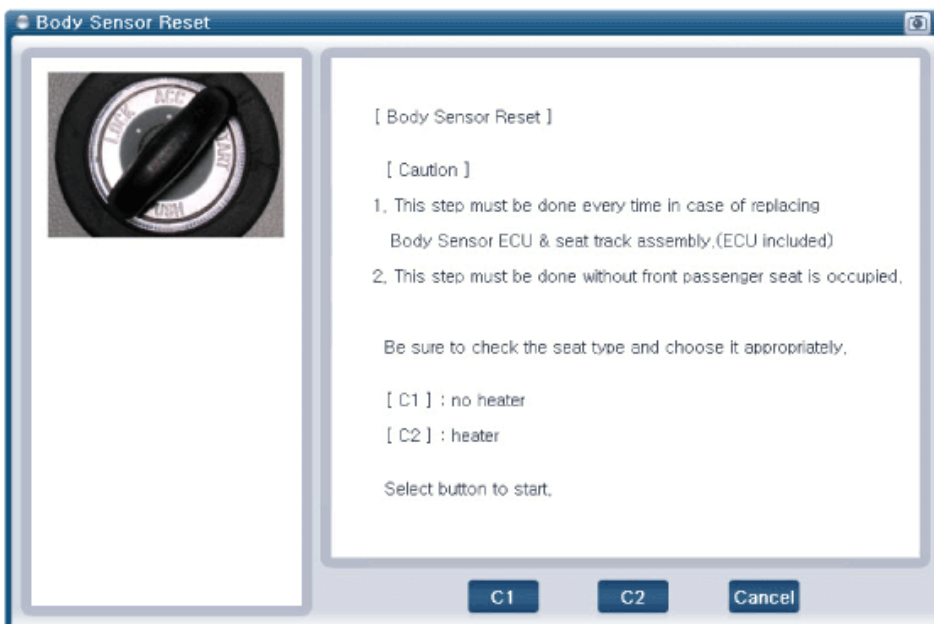
- The GDS will show the two OCS Reset function steps. Erase OCS diagnostic codes. OCS initialization. This Step must be done during front passenger seat empty.
- Erase OCS diagnostic codes.
- OCS initialization. This Step must be done during front passenger seat empty.



This Step must be done during front passenger seat empty.



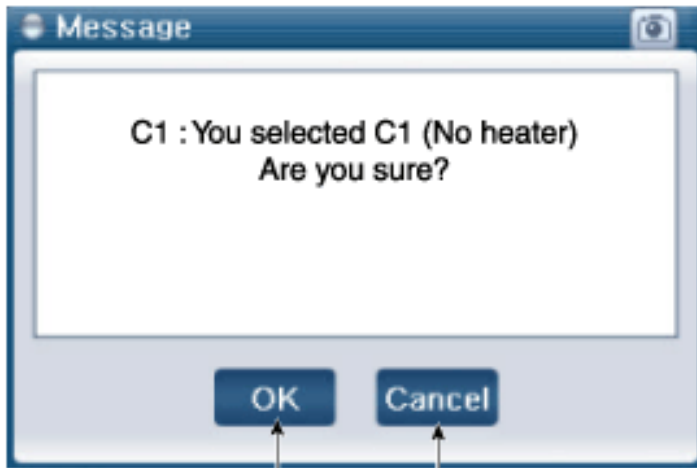
- This Step must be done during front passenger seat empty.
- Select product configuration. C1 : No heater C2 : Heater Before the starting the OCS Rest process, cross check seat correct configuration with actual vehicle. If you see the center console, you can find different buttons per each different seat configuration type. (Refer to the below picture)
- C1 : No heater
- C2 : Heater



Before the starting the OCS Rest process, cross check seat correct configuration with actual vehicle. If you

see the center console, you can find different buttons per each different seat configuration type. (Refer to the below picture)

- Before the starting the OCS Rest process, cross check seat correct configuration with actual vehicle.
- If you see the center console, you can find different buttons per each different seat configuration type. (Refer to the below picture)

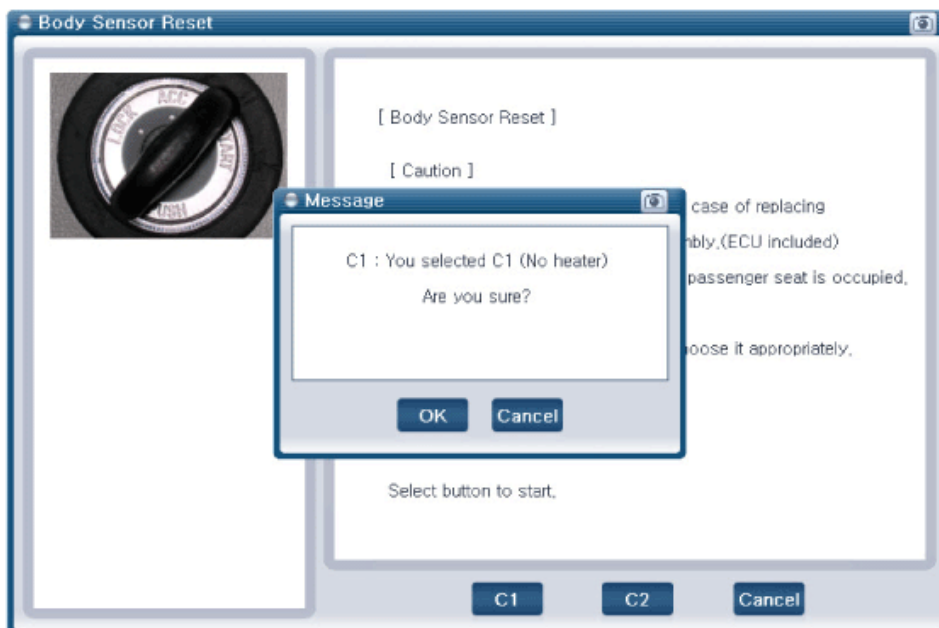


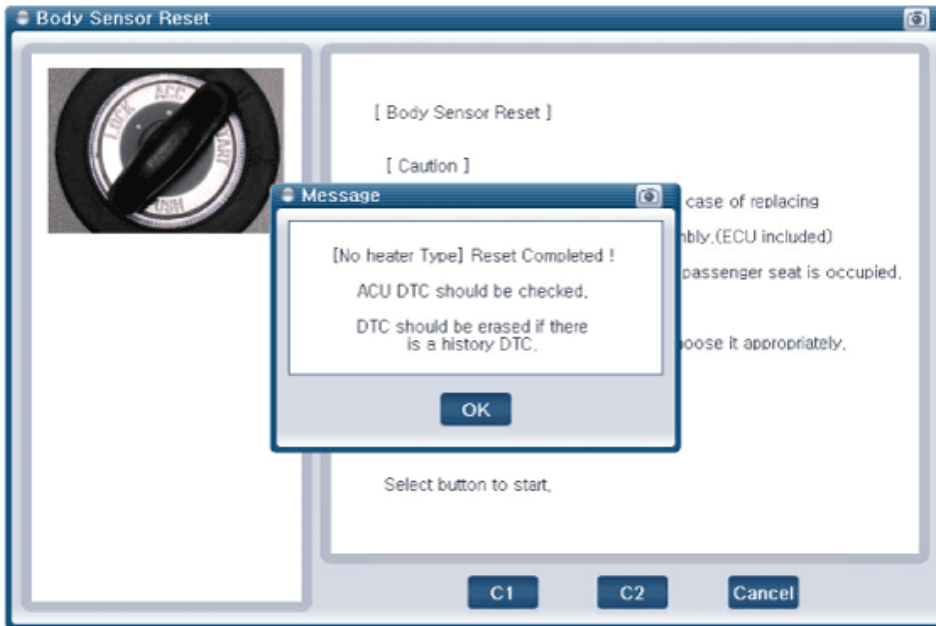
If OK, go next procedure

If cancel, return the procedure back(page 2)

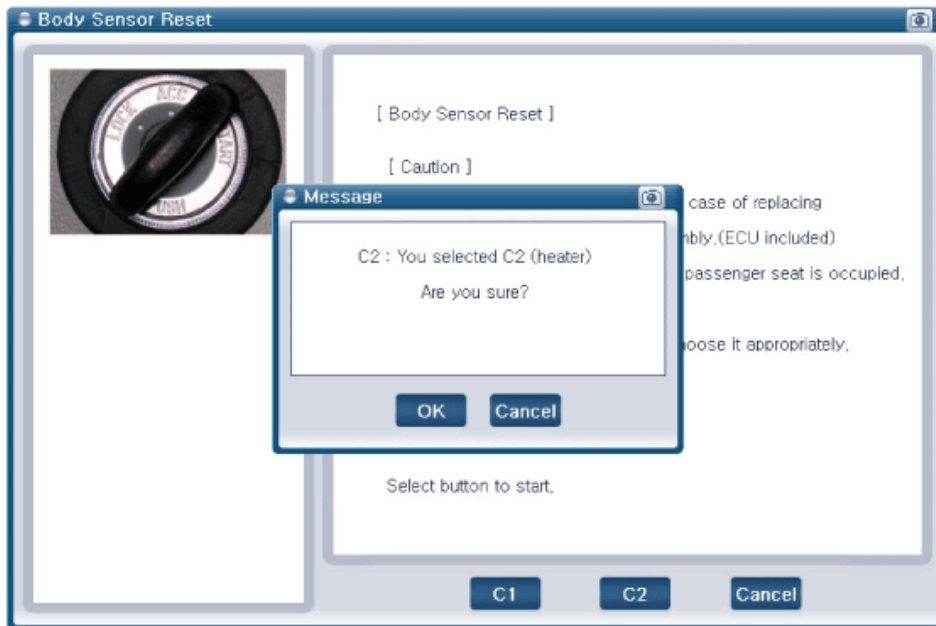
- The OCS initialization procedure will be performed. C1 : No Heater Type Reset C2 : Heater Type Reset (Including Cooling Seat) Erase the SRSCM diagnostic codes after completing the OCS reset. DTC Code Code Name Description B176300 ECU Defect Reset(Calibration setting) is not completed ECU is damaged from physical stress B176400 MAT Defect Mat and ECU are not connected . Mat is damaged from physical stress. B17672F Algo cut-off Too much humidity. B111117 IGN voltage high IGN voltage high. B111216 IGN voltage low IGN voltage low. B160388 CAN bus off CAN Bus is not working. B169787 ACU communication error CAN Bus is not working. ACU is not working.

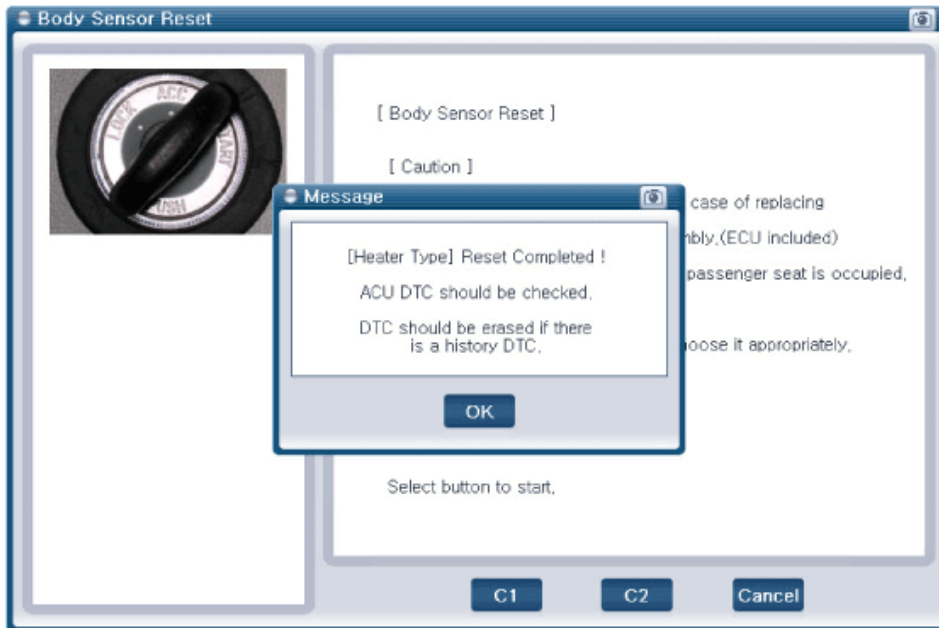
C1 : No Heater Type Reset





C2 : Heater Reset (Including Cooling Seat)





Erase the SRSCM diagnostic codes after completing the OCS reset.

- Erase the SRSCM diagnostic codes after completing the OCS reset.

DTC Code Name Description

B176300 ECU Defect Reset(Calibration setting) is not completed ECU is damaged from physical stress

- Reset(Calibration setting) is not completed

- ECU is damaged from physical stress

B176400 MAT Defect Mat and ECU are not connected . Mat is damaged from physical stress.

- Mat and ECU are not connected .

- Mat is damaged from physical stress.

B17672F Algo cut-off Too much humidity.

- Too much humidity.

B111117 IGN voltage high IGN voltage high.

- IGN voltage high.

B111216 IGN voltage low IGN voltage low.

- IGN voltage low.

B160388 CAN bus off CAN Bus is not working.

- CAN Bus is not working.

B169787 ACU communication error CAN Bus is not working. ACU is not working.

- ACU is not working.