

Component Procedures: Evaporative Emission Control Canister

Table of Contents

1. Parts and Labor (itype_189)
2. Canister - Repair Procedures (Article 44103)

Component Procedures: Evaporative Emission Control Canister

Parts and Labor (itype_189)

Parts

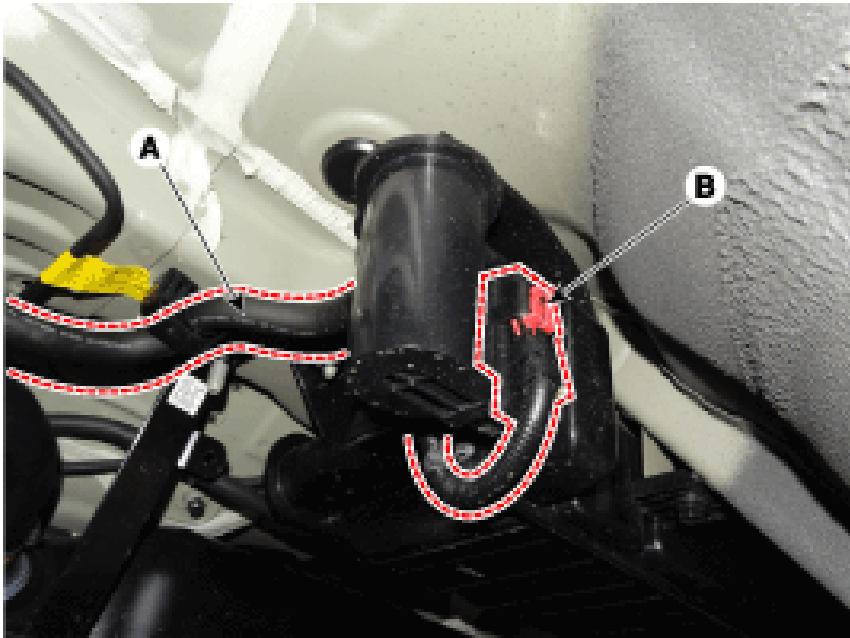
Qualifier	Part #	Name	Price	Note
Vapor Canister > Vapor Canis?	31420F2500	Korea Built	267.79	
Vapor Canister > Vapor Canis?	31420F3500	Us Built	543.32	

Labor

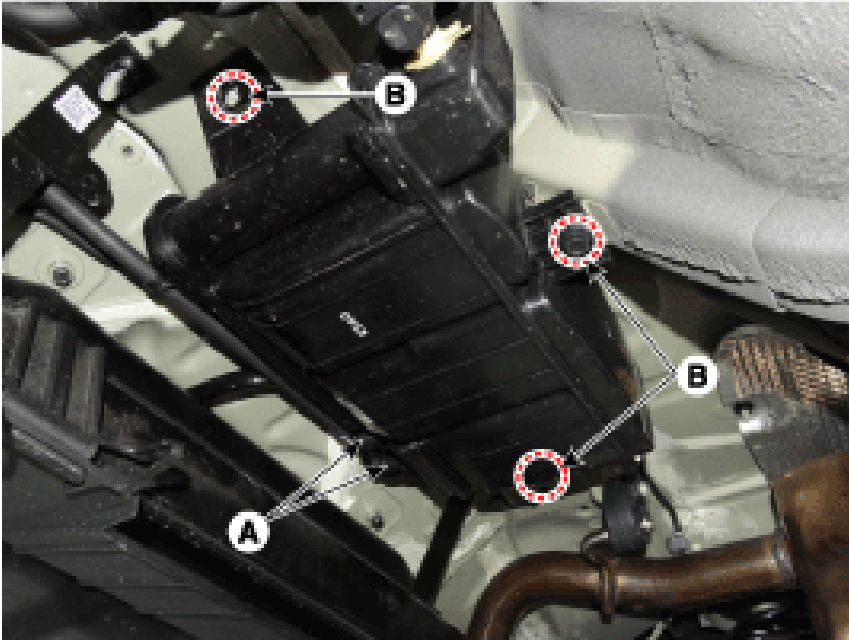
Operation	Qualifier Path	Skill	Std Hrs	Wty Hrs
Remove & Replace	Vapor Canister > Vapor Canister, R&R	B	0.6	0.0

Canister - Repair Procedures (Article 44103)

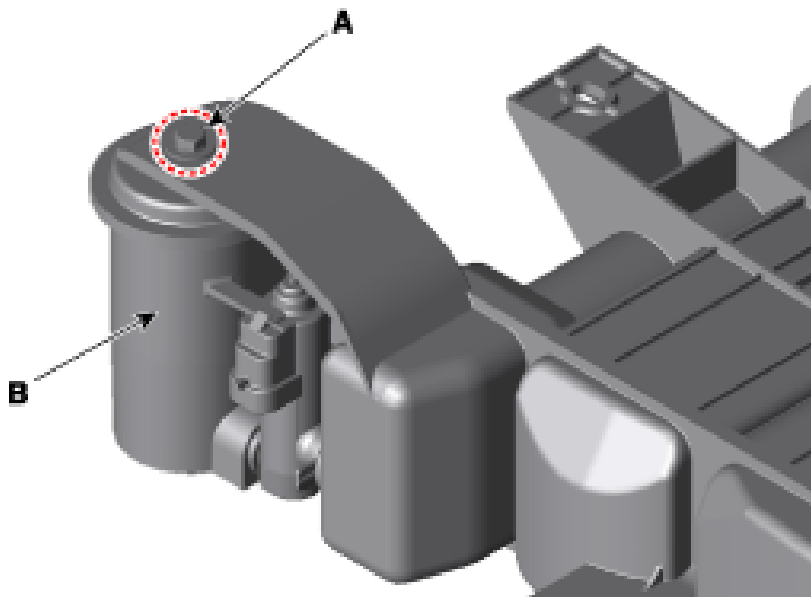
- Removal
- Turn the ignition switch OFF and disconnect the battery negative (-) cable.
- Lift the vehicle.
- Disconnect the ventilation hose (A), and canister close valve extension connector (B).



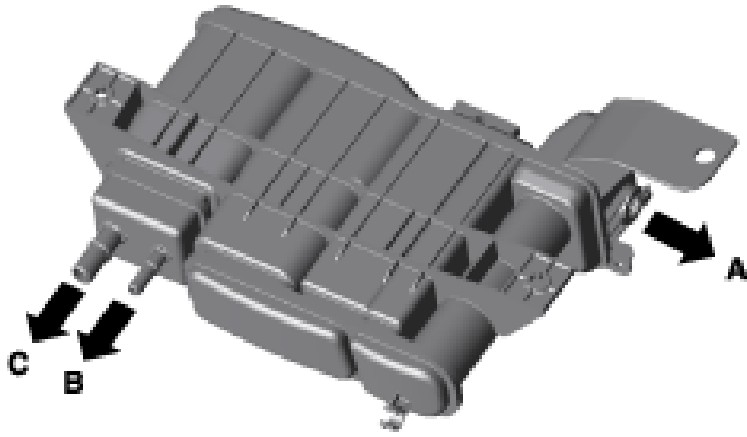
- Disconnect the vapor tube quick-connector (A).
- Remove installation nuts & bolt (B) and then remove the canister assembly.



- Remove the installation bolt (A), and then remove the air filter (B).



- Inspection
- Check for the following items visually. Cracks or leakage of the canister Loose connection, distortion, or damage of the vapor hose/tube A : Canister ↔ Atmosphere B : Canister ↔ Intake Manifold C : Canister ↔ Fuel Tank
- Cracks or leakage of the canister
- Loose connection, distortion, or damage of the vapor hose/tube



- Installation
- Installation is the reverse of removal. Canister installation bolt/nut : 19.6 - 29.4 N.m (2.0 - 3.0 kgf.m, 14.5 - 21.7 lb-ft)