

# Component Procedures: Air Bag

## Table of Contents

1. Parts and Labor (itype\_189)
2. Curtain Airbag (CAB) Module - Description and Operation (Article 44930)
3. Driver Airbag (DAB) Module and Clock Spring - Description and Operation (Article 44919)
4. Knee Airbag (KAB) Module - Description and Operation (Article 44933)
5. Passenger Airbag (PAB) Module - Description and Operation (Article 44924)
6. Side Airbag (SAB) Module - Description and Operation (Article 44927)
7. Curtain Airbag (CAB) Module - Components and Components Location (Article 44929)
8. Driver Airbag (DAB) Module and Clock Spring - Components and Components Location (Article 44917)
9. Knee Airbag (KAB) Module - Components and Components Location (Article 44932)
10. Passenger Airbag (PAB) Module - Components and Components Location (Article 44923)
11. Side Airbag (SAB) Module - Components and Components Location (Article 44926)
12. Airbag Module Disposal - Description and Operation (Article 44936)
13. Curtain Airbag (CAB) Module - Repair Procedures (Article 44931)
14. Driver Airbag (DAB) Module and Clock Spring - Repair Procedures (Article 44921)
15. Knee Airbag (KAB) Module - Repair Procedures (Article 44934)
16. Passenger Airbag (PAB) Module - Repair Procedures (Article 44925)
17. Side Airbag (SAB) Module - Repair Procedures (Article 44928)

# Component Procedures: Air Bag

## Parts and Labor (itype\_189)

### Parts

Qualifier	Part #	Name	Price	Note
Supplemental Restraint System	80100F3000TRY	Driver Inflator Module	688.68	Order By Color.
Supplemental Restraint System	84530F3500	Passenger Inflator Mod?	1351.13	
Supplemental Restraint Syste?	85010F3200	Left	577.71	
Supplemental Restraint Syste?	85020F3200	Right	577.71	
Supplemental Restraint Syste?	56970F2100XUG	Beige	391.84	
Supplemental Restraint Syste?	56970F2100TRY	Black	391.84	
Supplemental Restraint Syste?	56970F2100PKG	Gray	391.84	
Supplemental Restraint Syste?	56970F3000XUG	Beige	929.13	
Supplemental Restraint Syste?	56970F3000TRY	Black	929.13	
Supplemental Restraint Syste?	56970F3000PKG	Gray	929.13	
Supplemental Restraint Syste?	88910F3500	Left	563.39	
Supplemental Restraint Syste?	88920F3500	Right	552.35	

### Labor

Operation	Qualifier Path	Skill	Std Hrs	Wty Hrs
Remove & Replace	Supplemental Restraint System > Driver Inflat?	B	0.4	0.0
Remove & Replace	Supplemental Restraint System > Inflator Curt?	B	3.5	0.0
Remove & Replace	Supplemental Restraint System > Inflator Curt?	B	4.9	0.0
Remove & Replace	Supplemental Restraint System > Passenger Inf?	B	2.8	0.0
Remove & Replace	Supplemental Restraint System > Side Impact I?	B	1.4	0.0

## Curtain Airbag (CAB) Module - Description and Operation (Article 44930)

### - Description

Never attempt to measure the circuit resistance of the airbag module even if you are using the specified tester. If the circuit resistance is measured with a tester, accidental airbag deployment will result in serious personal injury.



- Never attempt to measure the circuit resistance of the airbag module even if you are using the specified tester. If the circuit resistance is measured with a tester, accidental airbag deployment will result in serious personal injury.

## Driver Airbag (DAB) Module and Clock Spring - Description and Operation (Article 44919)

### - Description

- Driver Air Bag ( DAB ) DAB is installed in the steering wheel, and electrically connected to the SRSCM via clock spring . It is deployed during frontal impact to protect the driver.

- Clock Spring Clock spring delivers actuation signal, generated by the sensors installed in the front and right/left sides of a vehicle, to the inflator (gas generator) of the driver air bag module via internal cable. It also delivers actuation signal of the steering wheel remote control switch and horn to relevant systems via internal cable.

Never attempt to measure the circuit resistance of the airbag module (squib) even if you are using the specified tester. If the circuit resistance is measured with a tester, accidental airbag deployment will result in serious personal injury.



- Never attempt to measure the circuit resistance of the airbag module (squib) even if you are using the specified tester. If the circuit resistance is measured with a tester, accidental airbag deployment will result in serious personal injury.

### **Knee Airbag (KAB) Module - Description and Operation (Article 44933)**

- Description

Never attempt to measure the circuit resistance of the airbag module (squib) even if you are using the specified tester. If the circuit resistance is measured with a tester, accidental airbag deployment will result in serious personal injury.

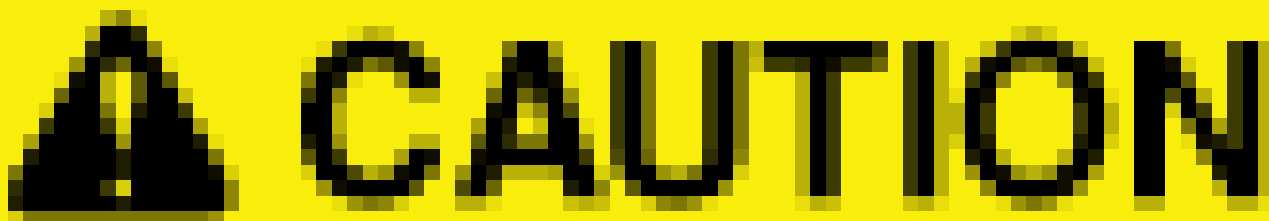


- Never attempt to measure the circuit resistance of the airbag module (squib) even if you are using the specified tester. If the circuit resistance is measured with a tester, accidental airbag deployment will result in serious personal injury.

### **Passenger Airbag (PAB) Module - Description and Operation (Article 44924)**

- Description

Never attempt to measure the circuit resistance of the airbag module (squib) even if you are using a specified tester. If the circuit resistance is measured with a tester, accidental airbag deployment will result in serious personal injury.



- Never attempt to measure the circuit resistance of the airbag module (squib) even if you are using a specified tester. If the circuit resistance is measured with a tester, accidental airbag deployment will result in serious personal injury.

### **Side Airbag (SAB) Module - Description and Operation (Article 44927)**

- Description

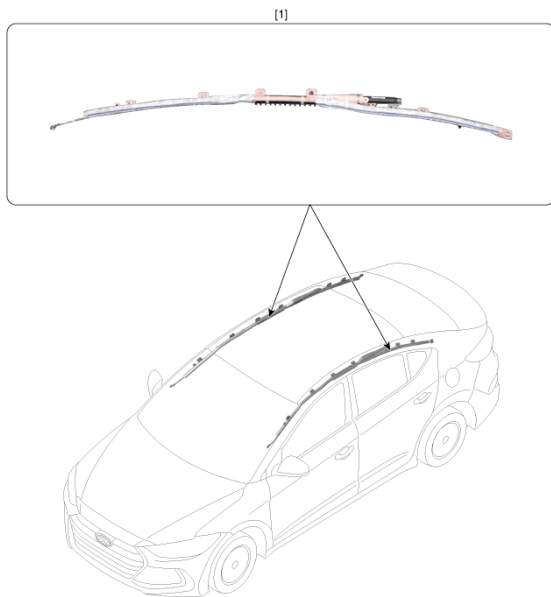
Never attempt to measure the circuit resistance of the airbag module (squib) even if you are using the specified tester. If the circuit resistance is measured with a tester, accidental airbag deployment will result in serious personal injury.

# ⚠ CAUTION

- Never attempt to measure the circuit resistance of the airbag module (squib) even if you are using the specified tester. If the circuit resistance is measured with a tester, accidental airbag deployment will result in serious personal injury.

## **Curtain Airbag (CAB) Module - Components and Components Location (Article 44929)**

- Components



1. Curtain Air Bag (CAB)

## **Driver Airbag (DAB) Module and Clock Spring - Components and Components Location (Article 44917)**

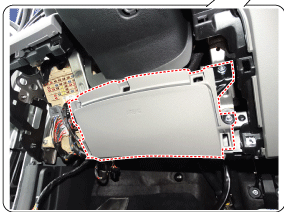
- Components



1. Driver Air Bag ( DAB ) 2. Steering Wheel 3. Clock Spring

## Knee Airbag (KAB) Module - Components and Components Location (Article 44932)

- Components



[1]

1. Knee Airbag (KAB)

## Passenger Airbag (PAB) Module - Components and Components Location (Article 44923)

- Components



1. Passenger Air Bag ( PAB )

**Side Airbag (SAB) Module - Components and Components Location (Article 44926)**

- Components



1. Side Air Bag (SAB)

**Airbag Module Disposal - Description and Operation (Article 44936)**

- Airbag Disposal

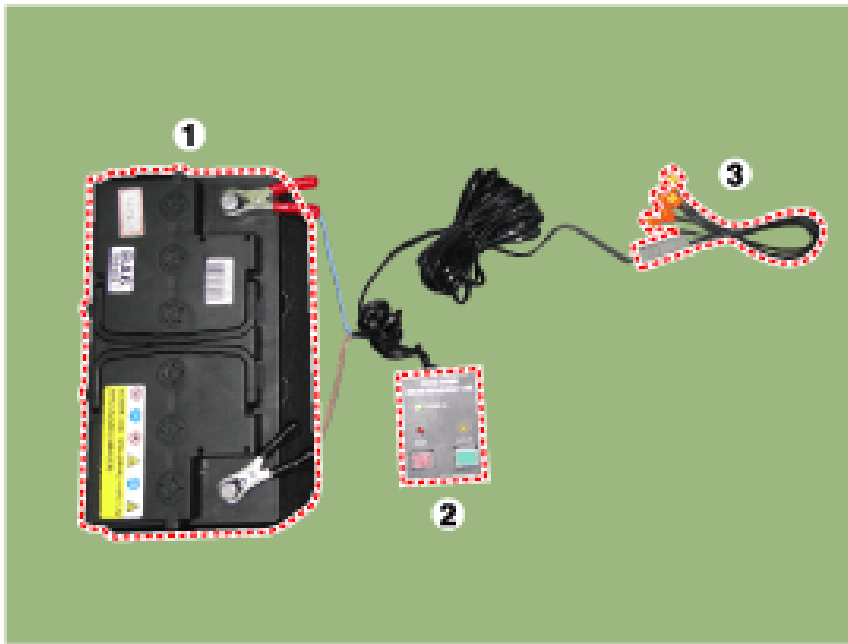
Upon deployment, the explosion will create a loud noise, so you have to do it in a proper place not to disturb others. When you deploy an airbag, use a specially designated tool and select a place where there is no electric noise. When operating the airbag deployment tool, you must be at least 5 meters away from the airbag. Upon deployment, the airbag gives off an intense heat. So wait for 30 minutes or so before touching it. Make sure to use gloves and safety goggles when you deal with the deployed airbag. Do not spread water over the deployed airbag. Always wash your hands after the deployment work is completed.

# CAUTION

- Upon deployment, the explosion will create a loud noise, so you have to do it in a proper place not to disturb others.
- When you deploy an airbag, use a specially designated tool and select a place where there is no electric noise.
- When operating the airbag deployment tool, you must be at least 5 meters away from the airbag.
- Upon deployment, the airbag gives off an intense heat. So wait for 30 minutes or so before touching it.
- Make sure to use gloves and safety goggles when you deal with the deployed airbag.
- Do not spread water over the deployed airbag.
- Always wash your hands after the deployment work is completed.

## Deploying Airbags in the Vehicle

- Turn the ignition switch OFF, and disconnect the battery negative cable and wait at least three minutes.
- Confirm that each airbag or side airbag is securely mounted.
- Confirm that the special tool is functioning properly by following the check procedure. Disconnect the 2P connector between the airbag and wire harness. Install the SST For the driver airbag, separate the 2-pin connector from it and connect the deployment adapter to reattach it on the steering wheel.
- Disconnect the 2P connector between the airbag and wire harness.
- Install the SST For the driver airbag, separate the 2-pin connector from it and connect the deployment adapter to reattach it on the steering wheel.
- For the driver airbag, separate the 2-pin connector from it and connect the deployment adapter to reattach it on the steering wheel.
- Locate the airbag deployment tool at a place at least 5 meters away from the airbag.
- After connecting the deployment adapter with the deployment tool (0957A-34100A), connect it to the external battery for deployment. Battery (12V) Deployment tool (0957A-34100A) Deployment adapter DAB , PAB , CAB, BPT , EFD(0957A-AL140) KAB(0957A-AL150) SAB(0957A-AL160)
- Battery (12V)
- Deployment tool (0957A-34100A)
- Deployment adapter DAB , PAB , CAB, BPT , EFD(0957A-AL140) KAB(0957A-AL150) SAB(0957A-AL160)
- DAB , PAB , CAB, BPT , EFD(0957A-AL140)
- KAB(0957A-AL150)
- SAB(0957A-AL160)



- Switch on the deployment tool to proceed with deployment. If the battery is connected, the POWER ON(1) light will be on. Press and hold READY (2) until it is on, and then press DEPLOY (3) to deploy the airbag. Upon deployment, the airbag will create a loud noise and you can see it suddenly expand and contract slowly.
- If the battery is connected, the POWER ON(1) light will be on.
- Press and hold READY (2) until it is on, and then press DEPLOY (3) to deploy the airbag. Upon deployment, the airbag will create a loud noise and you can see it suddenly expand and contract slowly.



Upon deployment, the airbag will create a loud noise and you can see it suddenly expand and contract slowly.

# NOTICE

- Upon deployment, the airbag will create a loud noise and you can see it suddenly expand and contract slowly.

- Dispose of the complete airbag. No parts can be reused. Place it in a sturdy plastic bag and seal it securely.



#### Deploying the Airbag Out of the Vehicle

- Place the airbag deployment module face upward on a flat surface outdoor. If the airbag deployment module were face downward, the airbag will pop up and cause damage to people around it.  
If the airbag deployment module were face downward, the airbag will pop up and cause damage to people around it.



- If the airbag deployment module were face downward, the airbag will pop up and cause damage to people around it.

- Get ready to deploy the airbag as follows : Separate the 2-pin connector of the airbag from the vehicle.

Connect the deployment adapter. For the driver airbag, separate the 2-pin connector from it and connect the deployment adapter to reattach it on the steering wheel.

- Separate the 2-pin connector of the airbag from the vehicle.

- Connect the deployment adapter. For the driver airbag, separate the 2-pin connector from it and connect the deployment adapter to reattach it on the steering wheel.

- After connecting the deployment adapter (0957A-AL140, 0957A-AL150, 0957A-AL160) with the deployment tool

(0957A-34100A), connect it to the external battery (12V) for deployment. Battery (12V) Airbag Deploy

(0957A-34100A) Deployment adapter DAB, PAB, CAB, BPT, EFD (0957A-AL140) KAB (0957A-AL150) SAB (0957A-AL160)

When EFD are deployed, broken parts are exploded and scattered. EFD (Emergency Fastening Device) must be

placed in the piled up 5 tires to avoid exploded broken parts. Technicians should wear an eye protector and

extremely be cautions of exploded broken parts.

- Airbag Deploy (0957A-34100A)

- Deployment adapter DAB, PAB, CAB, BPT, EFD (0957A-AL140) KAB (0957A-AL150) SAB (0957A-AL160) When EFD are

deployed, broken parts are exploded and scattered. EFD (Emergency Fastening Device) must be placed in the

piled up 5 tires to avoid exploded broken parts. Technicians should wear an eye protector and extremely be

cautions of exploded broken parts.

- DAB, PAB, CAB, BPT, EFD (0957A-AL140)

- KAB (0957A-AL150)

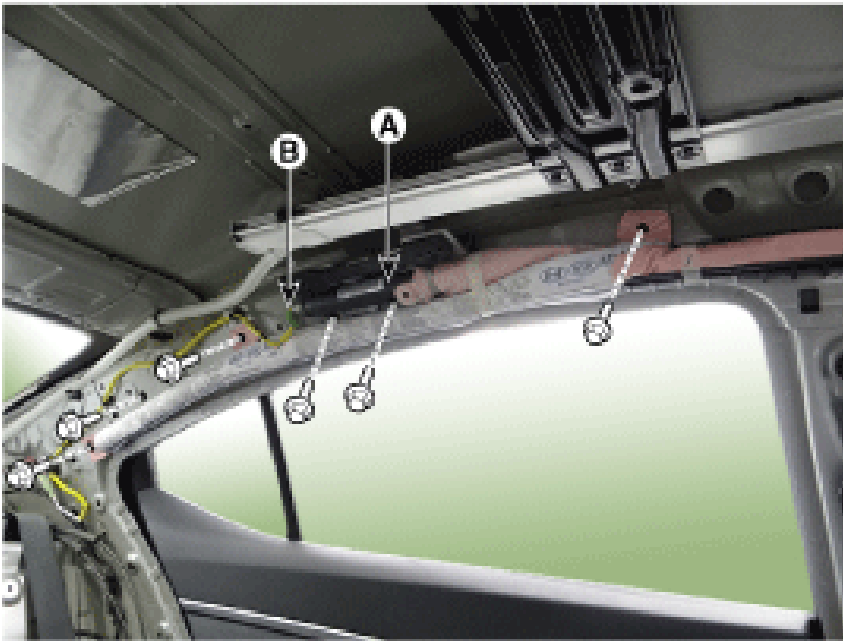
- SAB (0957A-AL160)

When EFD are deployed, broken parts are exploded and scattered. EFD (Emergency Fastening Device) must be placed in the piled up 5 tires to avoid exploded broken parts. Technicians should wear an eye protector and extremely be cautions of exploded broken parts.

- When EFD are deployed, broken parts are exploded and scattered.
  - EFD (Emergency Fastening Device) must be placed in the piled up 5 tires to avoid exploded broken parts.
  - Technicians should wear an eye protector and extremely be cautions of exploded broken parts.
  - Switch on the deployment tool to proceed with deployment. If the battery is connected, the POWER ON(1) light will be on. Press and hold READY (2) until it is on, and then press DEPLOY (3) to deploy the airbag.
  - Press and hold READY (2) until it is on, and then press DEPLOY (3) to deploy the airbag.
- Disposal of Damaged Airbag (Not Deployed Airbag)
- If installed airbags in a vehicle, follow the removal procedure of damaged airbag.
  - If the removed parts have a lead wire, make a short circuit by twisting together the two airbag inflator wires.
  - Package the airbag in exactly the same packing that the new replacement part come in.
  - Mark the outside of the box "DAMAGED AIRBAG NOT DEPLOYED" so it does not get confused with your parts stock.

### **Curtain Airbag (CAB) Module - Repair Procedures (Article 44931)**

- Removal
- Disconnect the battery negative cable and wait for at least 3 minutes before beginning work.
- Remove the roof trim.
- Remove the curtain airbag (A) after disconnecting the curtain airbag harness connector (B) and loosening the mounting bolts.





- Installation

- Remove the ignition key from the vehicle.
  - Disconnect the battery negative cable and wait for at least three minutes.
  - Tighten the curtain airbag mounting bolts and nuts. Tightening torque : Bolt : 7.8 - 11.8 N.m (0.8 - 1.2 kgf.m, 5.8 - 8.7 lb-ft) Never twist the airbag module during installation. If the airbag module is twisted, the airbag module may operate abnormally.
- Never twist the airbag module during installation. If the airbag module is twisted, the airbag module may operate abnormally.



- Never twist the airbag module during installation. If the airbag module is twisted, the airbag module may operate abnormally.
- Connect the curtain airbag connector.
- Install the roof trim.
- Reconnect the battery negative cable.
- After installing the curtain airbag (CAB), confirm proper system operation: Turn the ignition switch ON; the SRS indicator light should be turned on for about six seconds and then go off.
- Turn the ignition switch ON; the SRS indicator light should be turned on for about six seconds and then go off.

**Driver Airbag (DAB) Module and Clock Spring - Repair Procedures (Article 44921)**

- Removal

- Disconnect the battery negative cable and wait for at least three minutes before beginning work.
- Remove the driver airbag module. [Without Paddle Shift] Putting in a flat tool (Ø5mm) into the guide hole and then press the spring. [With Paddle Shift] Putting in a flat tool (Ø5mm) into the guide hole(A) and then rotate it. After inserting the tool, press the DAB fixed pin in the direction of the arrow as illustration below.

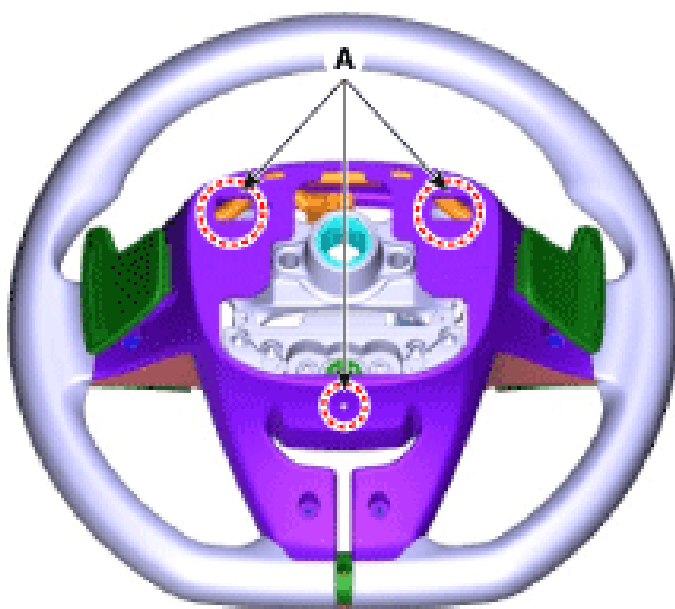
[Without Paddle Shift]

- Putting in a flat tool (Ø5mm) into the guide hole and then press the spring.

**Image not available at the time of publish.**

[With Paddle Shift]

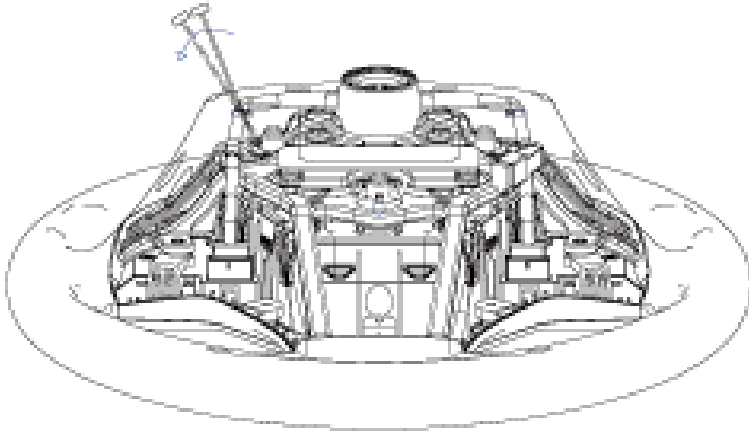
- Putting in a flat tool ( $\varnothing 5\text{mm}$ ) into the guide hole(A) and then rotate it.



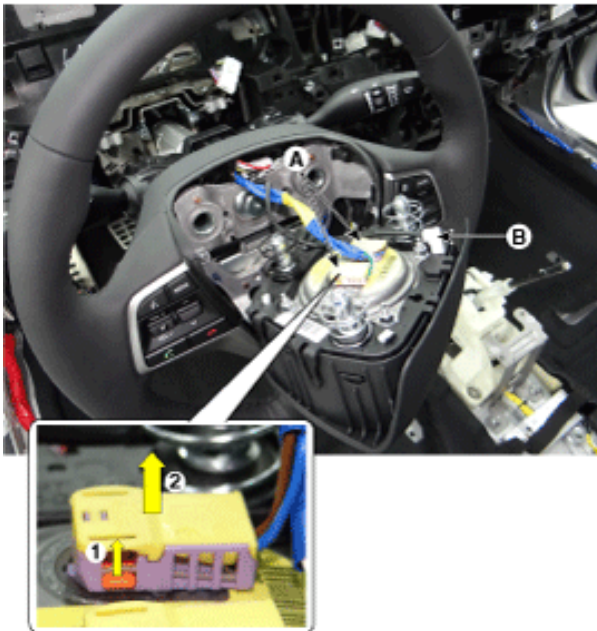
After inserting the tool, press the DAB fixed pin in the direction of the arrow as illustration below.



- After inserting the tool, press the DAB fixed pin in the direction of the arrow as illustration below.



- Release the connector locking pin, then disconnect the driver airbag module connector (A) and horn connector (B). The removed airbag module should be stored in a clean, dry place with the pad cover facing up.

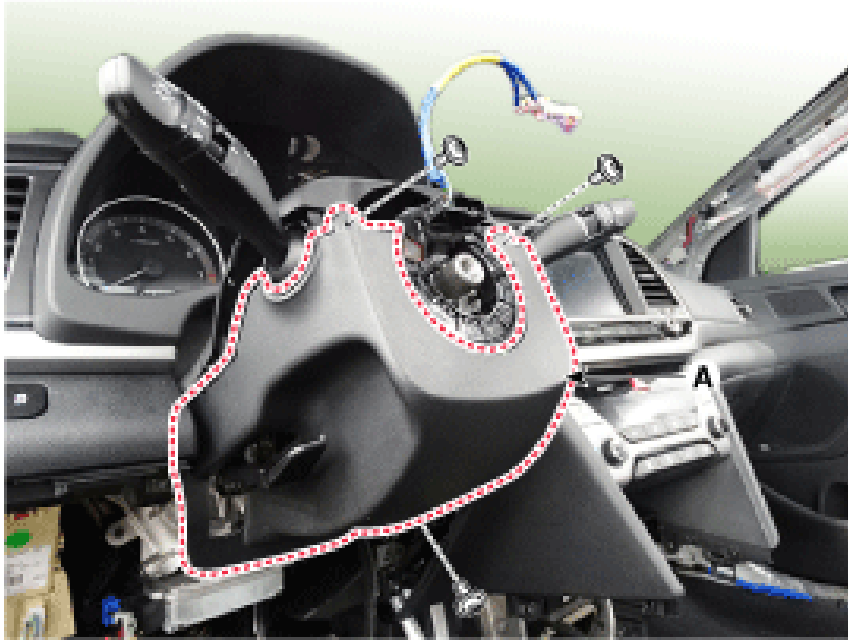


The removed airbag module should be stored in a clean, dry place with the pad cover facing up.

- The removed airbag module should be stored in a clean, dry place with the pad cover facing up.
- Remove the steering wheel. (Refer to Steering System - "Steering Wheel")
- Using a screwdriver or remover, separate the steering column shroud upper panel (A) from the steering column shroud lower panel.



- Remove the steering column shroud lower panel (A) after loosening the screws.



- Remove the clock spring (A) after disconnecting the clock spring connectors (B).

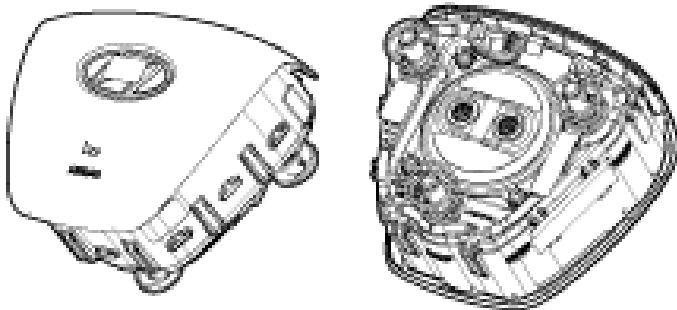


- Inspection

#### Driver Airbag (DAB)

Never attempt to measure the circuit resistance of the airbag module (squib) even if you are using the specified tester. If the circuit resistance is measured with a tester, accidental airbag deployment will result in serious personal injury.

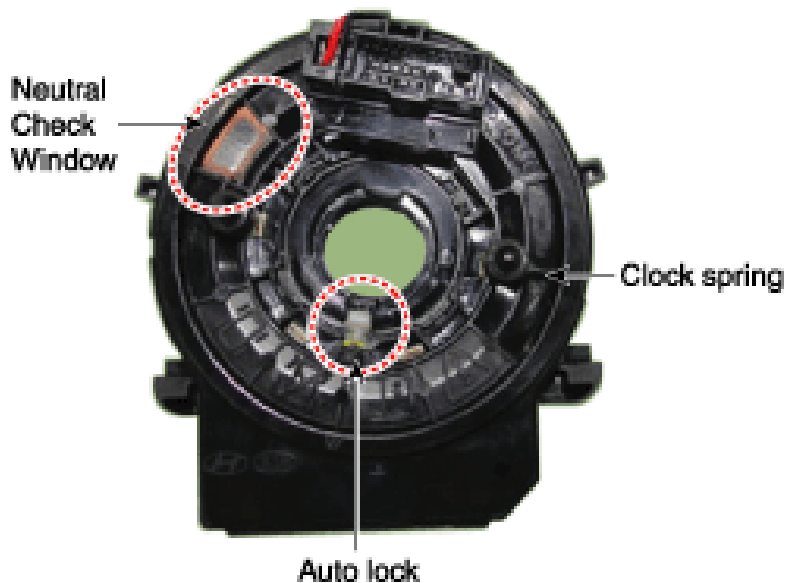
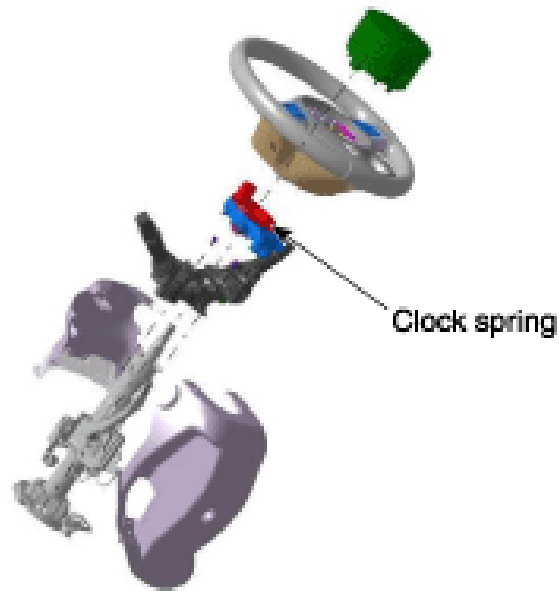
- Never attempt to measure the circuit resistance of the airbag module (squib) even if you are using the specified tester. If the circuit resistance is measured with a tester, accidental airbag deployment will result in serious personal injury.
- Check pad cover for dents, cracks or deformities.
- Check the airbag module for denting, cracking or deformation.
- Check hooks and connectors for damage, terminals for deformities, and harness for binds.
- Check airbag inflator case for dents, cracks or deformities.



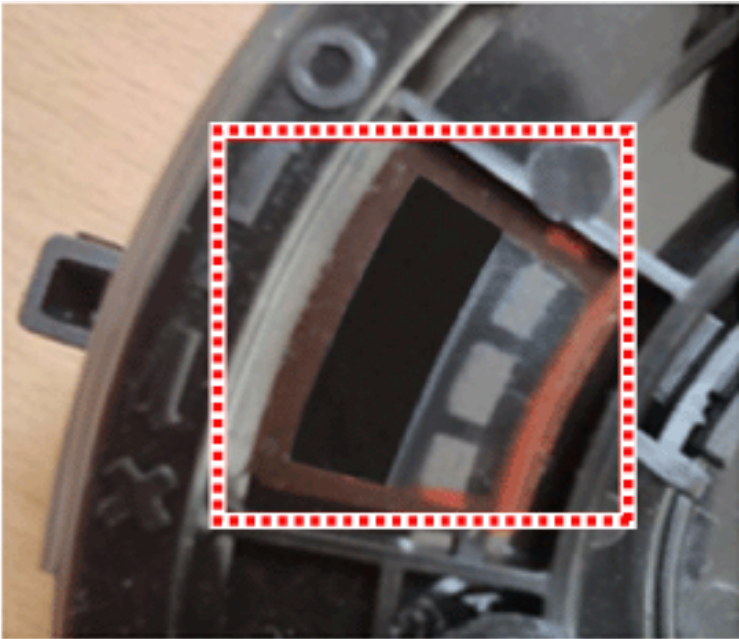
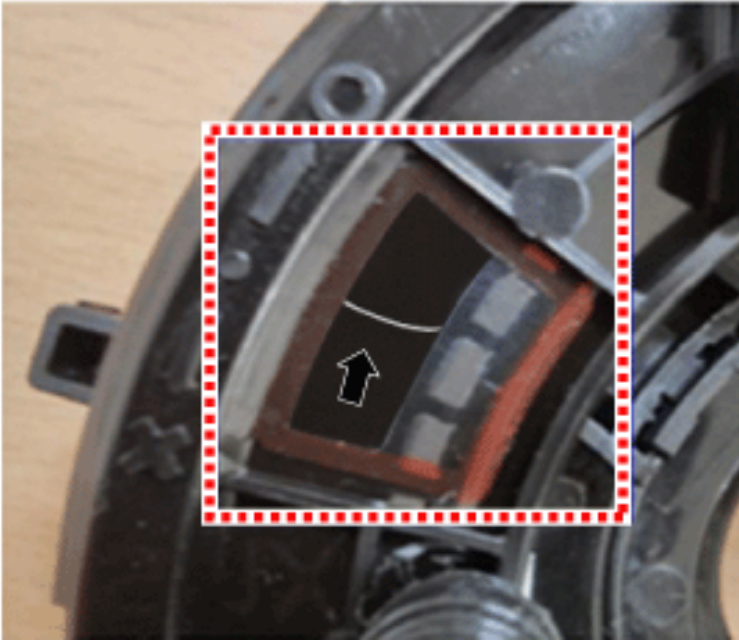
- Install the airbag module to the steering wheel to check for fit or alignment with the wheel.

#### Clock Spring

- If, as a result of the following checks, even one abnormal point is discovered, replace the clock spring with a new one.
- Check connectors and protective tube for damage, and terminals for deformities.



- Installation
- Set the front tires straight-ahead.
- Turn the ignition switch OFF.
- Disconnect the battery negative cable from the battery and wait for at least three minutes before beginning the work.
- Connect the clock spring harness connector and horn harness connector to the clock spring.
- Factory setting for the clock spring is neutral. If white cable is visible through the product's 10 O' Clock Neutral Check Window, then the spring is at neutral. If white cable is not visible through the product's 10 O' Clock Neutral Check Window, then manually adjust the setting to neutral. Neutral Check Window : Normal Neutral Check Window : Fault White cable is visible through 10 O' Clock Neutral Check Window White cable is not visible through 10 O' Clock Neutral Check Window
- If white cable is visible through the product's 10 O' Clock Neutral Check Window, then the spring is at neutral.
- If white cable is not visible through the product's 10 O' Clock Neutral Check Window, then manually adjust the setting to neutral. Neutral Check Window : Normal Neutral Check Window : Fault



White cable is visible through 10 O' Clock Neutral Check Window White cable is not visible through 10 O' Clock Neutral Check Window

- Clock spring manual neutral setting procedure. Press the Auto Lock at 6 O' Clock and turn clockwise 3 rotations. Press the Auto Lock at 6 O' Clock and turn counter-clockwise 3 rotations. If white cable is visible through the 10 O' Clock Neutral Check Window, then the spring is set to neutral.

- Press the Auto Lock at 6 O' Clock and turn clockwise 3 rotations.



- Press the Auto Lock at 6 O' Clock and turn counter-clockwise 3 rotations.
- If white cable is visible through the 10 O' Clock Neutral Check Window, then the spring is set to neutral.



- Install the steering wheel column shroud and the steering wheel. (Refer to Steering System - "Steering Column and Shaft")
- Connect the Driver Airbag (DAB) module connector and horn connector, and then install the Driver Airbag (DAB) module on the steering wheel. When install the Driver Airbag (DAB) module, Fix the horn wire and DAB inflator wire tightly with wire clip (A).
- When install the Driver Airbag (DAB) module, Fix the horn wire and DAB inflator wire tightly with wire clip (A).

# NOTICE

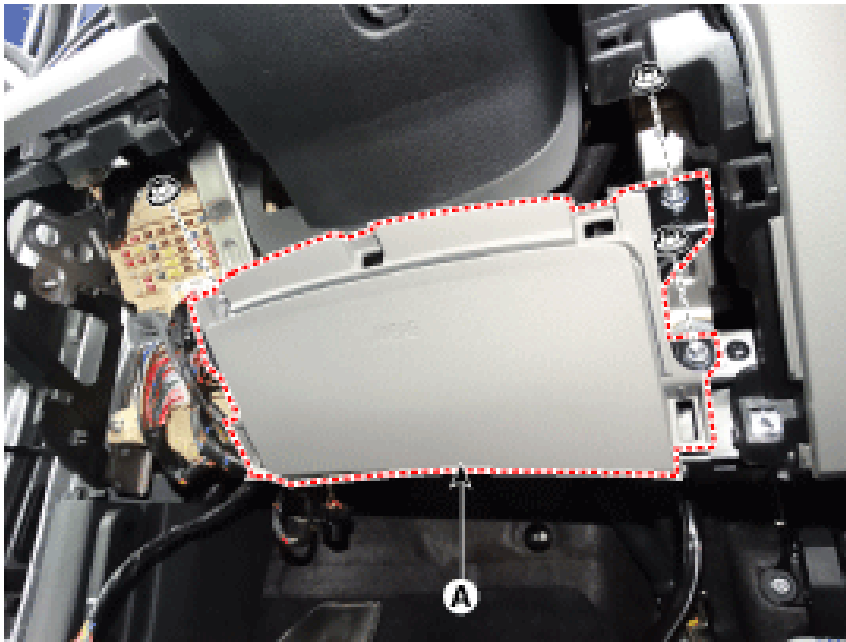
- When install the Driver Airbag (DAB) module, Fix the horn wire and DAB inflator wire tightly with wire clip (A).



- Connect the battery negative cable.
- After installing the airbag, confirm proper system operation : Turn the ignition switch ON; the SRS indicator light should be turned on for about six seconds and then go off. Make sure horn button works.
- Turn the ignition switch ON; the SRS indicator light should be turned on for about six seconds and then go off.
- Make sure horn button works.

## **Knee Airbag (KAB) Module - Repair Procedures (Article 44934)**

- Removal
- Disconnect the battery negative cable and wait for at least 3 minutes before beginning work.
- Remove the crash pad lower panel. (Refer to Body - "Crash Pad Lower Panel")
- Remove the knee airbag module (A) after loosening the mounting nuts.



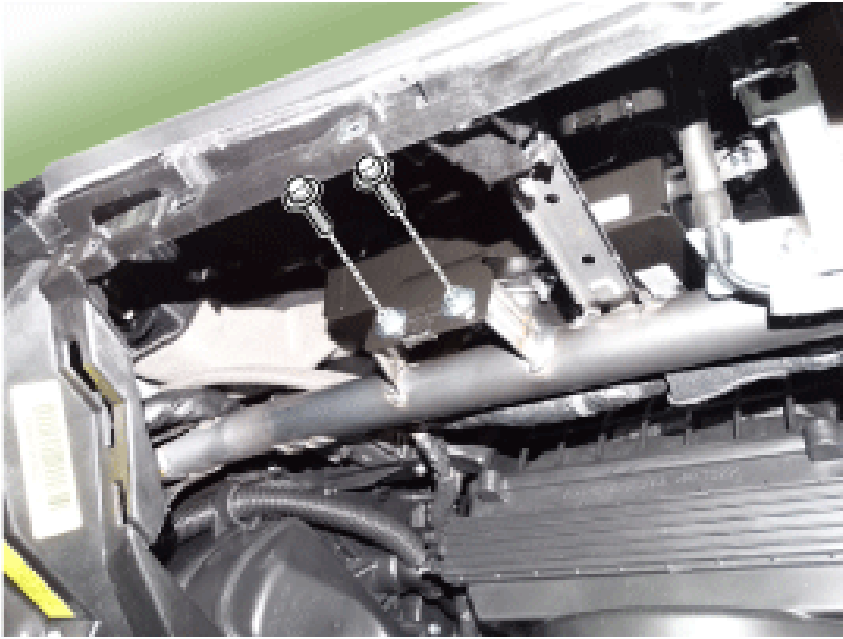
- Disconnect the knee airbag module connector (A).



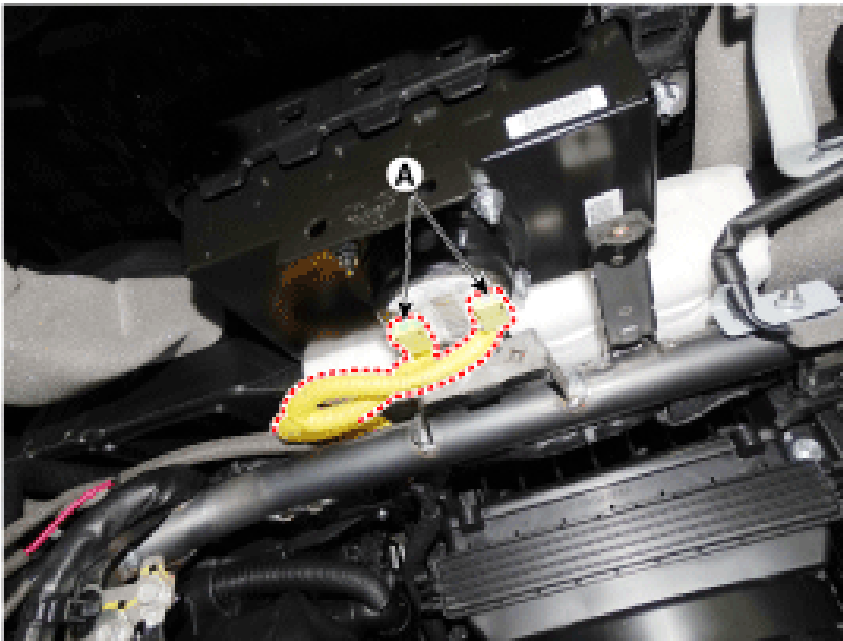
- Installation
- Remove the ignition key from the vehicle.
- Disconnect the battery negative cable and wait for at least three minutes.
- Install the knee airbag module after connect the knee airbag module connector. Tightening torque : Bolt : 7.8 - 11.8 N.m (0.8 - 1.2 kgf.m, 5.8 - 8.7 lb-ft)
- Install the crash pad lower panel.
- Reconnect the battery negative cable.
- After installing the knee airbag (KAB), confirm proper system operation : Turn the ignition switch ON; the SRS indicator light should be turned on for about six seconds and then go off.
- Turn the ignition switch ON; the SRS indicator light should be turned on for about six seconds and then go off.

### **Passenger Airbag (PAB) Module - Repair Procedures (Article 44925)**

- Removal
- Disconnect the battery negative cable and wait for at least three minutes before beginning work.
- Remove the glove box housing. (Refer to Body - "Glove Box Upper Cover Assembly")
- Remove the passenger airbag mounting bolts.



- Disconnect the passenger airbag connector (A).



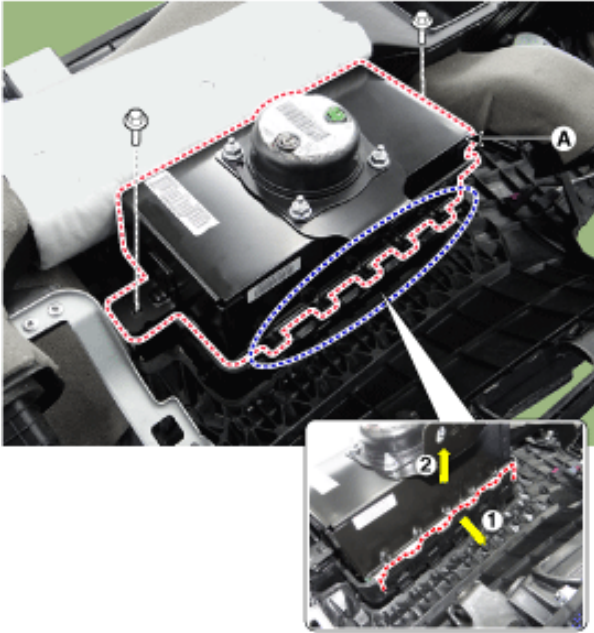
- Remove the crash pad. (Refer to Body - "Main Crash Pad Assembly") Replace the crash pad which that has been damaged after the PAB has been deployed.

Replace the crash pad which that has been damaged after the PAB has been deployed.

# NOTICE

- Replace the crash pad which that has been damaged after the PAB has been deployed.

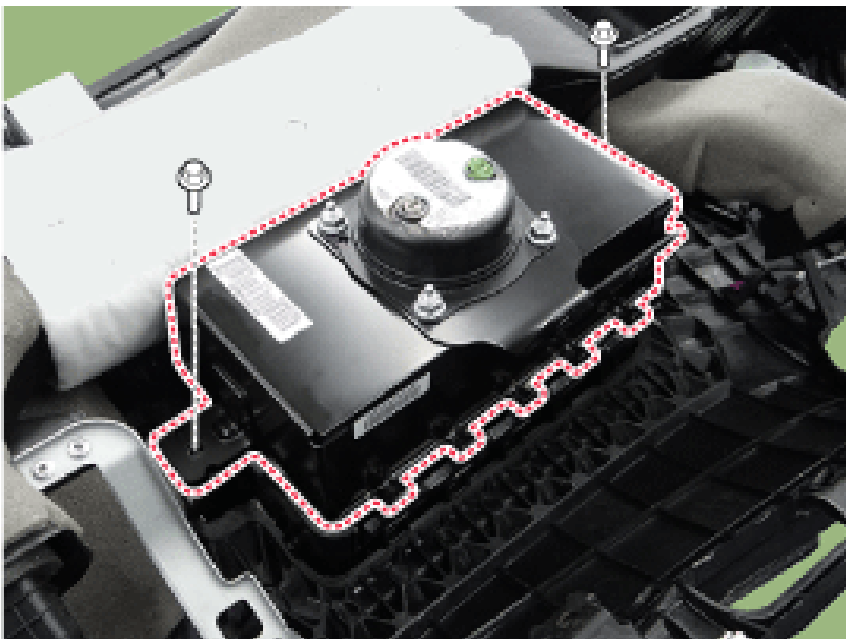
- Remove the passenger airbag (A) from the crash pad after loosening the mounting bolts. The removed airbag module should be stored in a clean, dry place with the airbag cushion up.



The removed airbag module should be stored in a clean, dry place with the airbag cushion up.

# ⚠ CAUTION

- The removed airbag module should be stored in a clean, dry place with the airbag cushion up.
- Installation
- Remove the ignition key from the vehicle.
- Disconnect the battery negative cable from battery and wait for at least three minutes before beginning work.
- Place the passenger airbag on the crash pad and tighten the passenger airbag mounting bolts. Tightening torque : 4.0 - 6.0 N.m (0.4 - 0.6 kgf.m, 2.9 - 4.4 lb-ft)



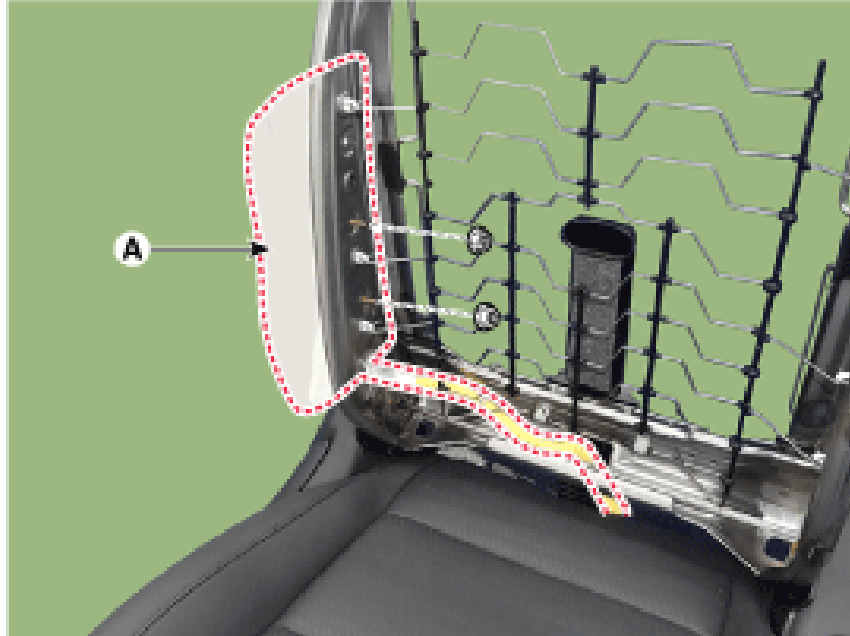
- Install the crash pad. (Refer to Body - "Main Crash Pad Assembly")
- Connect the passenger airbag harness connector to the SRS main harness connector (A).
- Tighten the passenger airbag crash pad mounting bolts. Tightening torque : 7.8 - 11.8 N.m (0.8 - 1.2 kgf.m, 5.8 - 8.7 lb-ft)
- Install the glove box. (Refer to Body - "Crash Pad Center Panel")
- Connect the battery negative cable.
- After installing the passenger airbag (PAB), confirm proper system operation : Turn the ignition switch ON; the SRS indicator light should be turned on for about six seconds and then go off.
- Turn the ignition switch ON; the SRS indicator light should be turned on for about six seconds and then go off.

### Side Airbag (SAB) Module - Repair Procedures (Article 44928)

- Removal
- Disconnect the negative battery terminal. After disconnecting the cables, wait at least 3 minutes. After disconnecting the cables, wait at least 3 minutes.



- After disconnecting the cables, wait at least 3 minutes.
- Remove the front seat assembly. (Refer to Body - "Front Seat Assembly")
- Remove the front seat back cover. (Refer to Body - "Front Seat Back Cover")
- Remove the side airbag (A) after loosening the side airbag mounting nuts.



- Installation
- Be sure to install the harness wires so they will not pinch or interfere with other parts.
- Be sure to install the harness wires so they will not pinch or interfere with other parts.
- Do not open the lid of the side airbag cover. Make sure that the airbag assembly cover is installed properly. Improper installation may prevent the proper deployment.

# NOTICE

- Do not open the lid of the side airbag cover.
- Make sure that the airbag assembly cover is installed properly. Improper installation may prevent the proper deployment.
- Remove the ignition key from the vehicle.
- Disconnect the battery negative cable and wait for at least three minutes.
- Place a side airbag on the side airbag (A) frame and tighten the side airbag mounting nuts.
- Install the front seat back cover. (Refer to Body - "Front Seat Back Cover")
- Install the front seat assembly. (Refer to Body - "Front Seat Assembly")
- Recline and slide the front seat forward fully, make sure the harness wires are not pinched or interfere with other parts.
- Reconnect the battery negative cable.
- After installing the side airbag (SAB), confirm proper system operation : Turn the ignition switch ON; the SRS indicator light should be turned on for about six seconds and then go off.
- Turn the ignition switch ON; the SRS indicator light should be turned on for about six seconds and then go off.