

Component Procedures: Oil Pan

Table of Contents

1. Parts and Labor (itype_189)
2. Oil Pan - Components and Components Location (Article 45384)
3. Oil Pan - Repair Procedures (Article 45385)

Component Procedures: Oil Pan

Parts and Labor (itype_189)

Parts

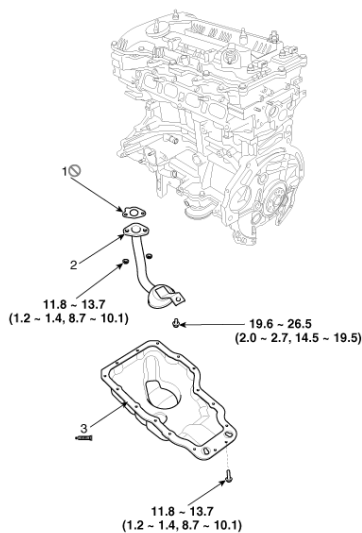
Qualifier	Part #	Name	Price	Note
Oil Pan > Oil Pan	215102E040	30 - Oil Pan	127.61	

Labor

Operation	Qualifier Path	Skill	Std Hrs	Wty Hrs
Remove & Replace	Oil Pan > Oil Pan Gasket, R&R	B	1.5	0.0
Remove & Replace	Oil Pan > Oil Pan, R&R	B	1.5	0.0

Oil Pan - Components and Components Location (Article 45384)

- Components



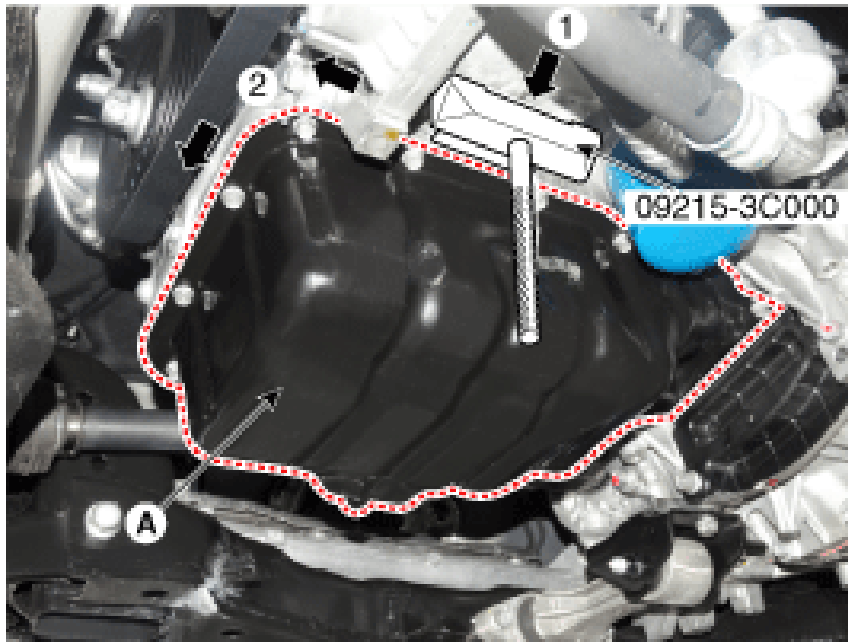
Tightening torque : N.m (kgf.m, lb-ft)

1. Oil screen gasket 2. Oil screen 3. Oil pan

Oil Pan - Repair Procedures (Article 45385)

- Removal

- Remove the engine room under cover . (Refer to Engine and Transaxle Assembly - "Engine Room Under Cover")
- Drain engine oil. (Refer to Lubrication System - "Engine Oil")
- Remove the oil pan (A). Unfasten the bolts. Insert the blade of SST (09215-3C000) between the lower crankcase and the oil pan. Separate the applied sealer and remove the oil pan. Loosen one oil pan bolt near each corner of the oil pan leaving the bolts held in by about 2 threads. Then remove all other pan bolts. Insert the SST between the oil pan and the lower crankcase by tapping it with a plastic hammer in the direction of ① arrow. After tapping the SST with a plastic hammer along the direction of ② arrow around more than 2/3 edge of the oil pan, remove it from the lower crankcase. Do not turn over the SST abruptly without tapping. It is result in damage of the SST. Be careful not to damage the contact surfaces of the lower crankcase and the oil pan.
- Unfasten the bolts.
- Insert the blade of SST (09215-3C000) between the lower crankcase and the oil pan. Separate the applied sealer and remove the oil pan.



Loosen one oil pan bolt near each corner of the oil pan leaving the bolts held in by about 2 threads. Then remove all other pan bolts.

NOTICE

- Loosen one oil pan bolt near each corner of the oil pan leaving the bolts held in by about 2 threads. Then remove all other pan bolts.

Insert the SST between the oil pan and the lower crankcase by tapping it with a plastic hammer in the direction of ① arrow. After tapping the SST with a plastic hammer along the direction of ② arrow around more than 2/3 edge of the oil pan, remove it from the lower crankcase. Do not turn over the SST abruptly without tapping. It is result in damage of the SST. Be careful not to damage the contact surfaces of the lower crankcase and the oil pan.

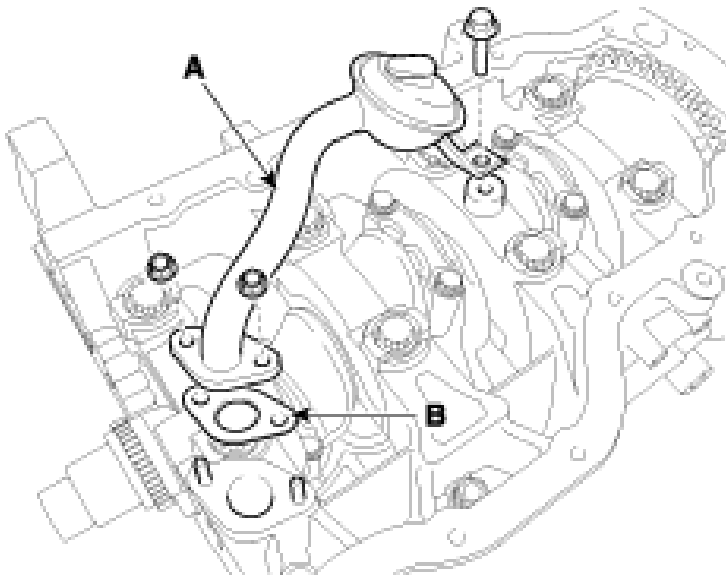
- Insert the SST between the oil pan and the lower crankcase by tapping it with a plastic hammer in the direction of ① arrow.

- After tapping the SST with a plastic hammer along the direction of ② arrow around more than 2/3 edge of the oil pan, remove it from the lower crankcase.

- Do not turn over the SST abruptly without tapping. It is result in damage of the SST.

- Be careful not to damage the contact surfaces of the lower crankcase and the oil pan.

- Remove the oil screen (A) with the gasket (B).



- Installation

- Install the oil screen (A) with a new gasket (B). Tightening torque Bolt : 19.6 - 26.5 N.m (2.0 - 2.7 kgf.m, 14.5 - 19.5 lb-ft) Nuts : 11.8 - 13.7 N.m (1.2 - 1.4 kgf.m, 8.7 - 10.1 lb-ft)

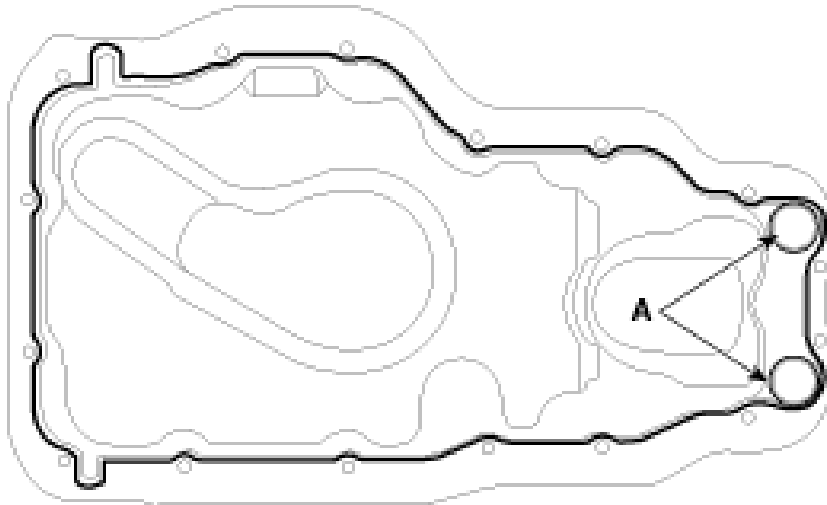
- Install the oil pan. Using a gasket scraper, remove all the old packing material from the gasket surfaces. The sealant locations on the oil pan and the lower crankcase must be free of harmful foreign materials, oil, dust and moisture. Spraying cleaner on the surface and wiping with a clean duster. After applying liquid sealant on the oil pan, assemble it within 5 minutes after sealant was applied. Continuous bead of sealant should be applied to prevent any path of oil leakage. Bead width Whole section : 4.0 - 5.0 mm (0.16 - 0.20 in.) Section A : 1.5 - 2.5 mm (0.06 - 0.10 in.) Sealant : Threebond 1217H (Hyundai Gray RTV) When applying sealant gasket, sealant must not be protruded into the inside of oil pan. If the sealant is applied to the bottom surface of the lower crankcase, it should be the same position as the oil pan. Install the oil pan (A). Uniformly tighten the bolts in several passes. Tightening torque : 11.8 - 13.7 N.m (1.2 - 1.4 kgf.m, 8.7 - 10.1 lb-ft) After assembly, wait at least 30 minutes before filling the engine with oil. Always use a new drain plug gasket.

- Using a gasket scraper, remove all the old packing material from the gasket surfaces.

- The sealant locations on the oil pan and the lower crankcase must be free of harmful foreign materials, oil, dust and moisture. Spraying cleaner on the surface and wiping with a clean duster.

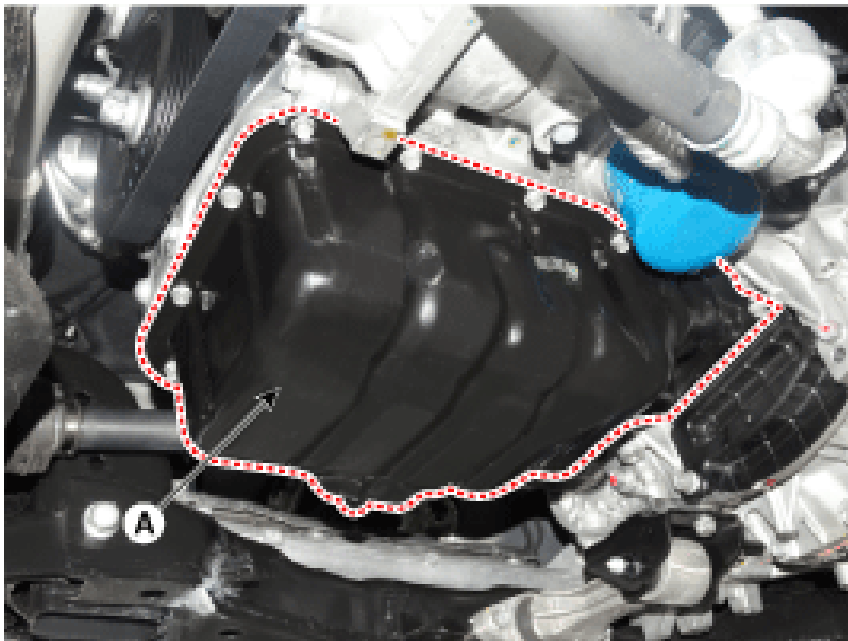
- After applying liquid sealant on the oil pan, assemble it within 5 minutes after sealant was applied.

Continuous bead of sealant should be applied to prevent any path of oil leakage. Bead width Whole section : 4.0 - 5.0 mm (0.16 - 0.20 in.) Section A : 1.5 - 2.5 mm (0.06 - 0.10 in.) Sealant : Threebond 1217H (Hyundai Gray RTV) When applying sealant gasket, sealant must not be protruded into the inside of oil pan. If the sealant is applied to the bottom surface of the lower crankcase, it should be the same position as the oil pan.



When applying sealant gasket, sealant must not be protruded into the inside of oil pan. If the sealant is applied to the bottom surface of the lower crankcase, it should be the same position as the oil pan.

- When applying sealant gasket, sealant must not be protruded into the inside of oil pan.
- If the sealant is applied to the bottom surface of the lower crankcase, it should be the same position as the oil pan.
- Install the oil pan (A). Uniformly tighten the bolts in several passes. Tightening torque : 11.8 - 13.7 N.m (1.2 - 1.4 kgf.m, 8.7 - 10.1 lb-ft) After assembly, wait at least 30 minutes before filling the engine with oil. Always use a new drain plug gasket.



After assembly, wait at least 30 minutes before filling the engine with oil.

- After assembly, wait at least 30 minutes before filling the engine with oil.
- Always use a new drain plug gasket.
- Always use a new drain plug gasket.
- Refill engine with engine oil.