

# **Component Procedures: Front Door Panel**

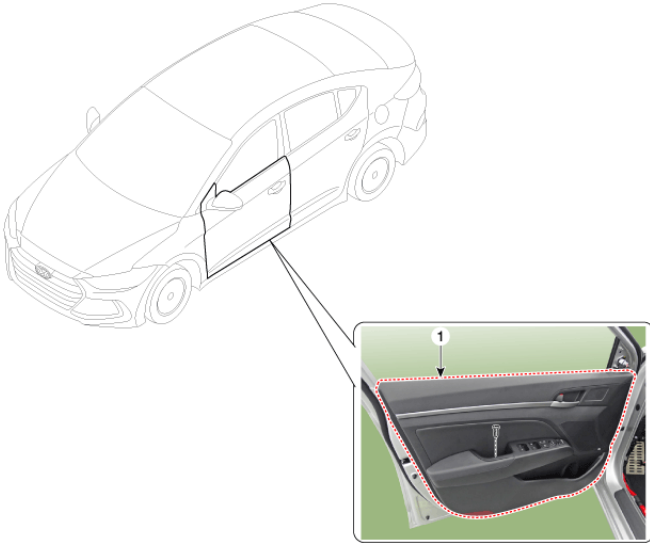
## **Table of Contents**

1. Front Door Trim - Components and Components Location (Article 45141)
2. Front Door Trim - Repair Procedures (Article 45142)

## Component Procedures: Front Door Panel

### Front Door Trim - Components and Components Location (Article 45141)

- Component Location



1. Front door trim

### Front Door Trim - Repair Procedures (Article 45142)

- Replacement

Put on gloves to prevent hand injuries.



- Put on gloves to prevent hand injuries.

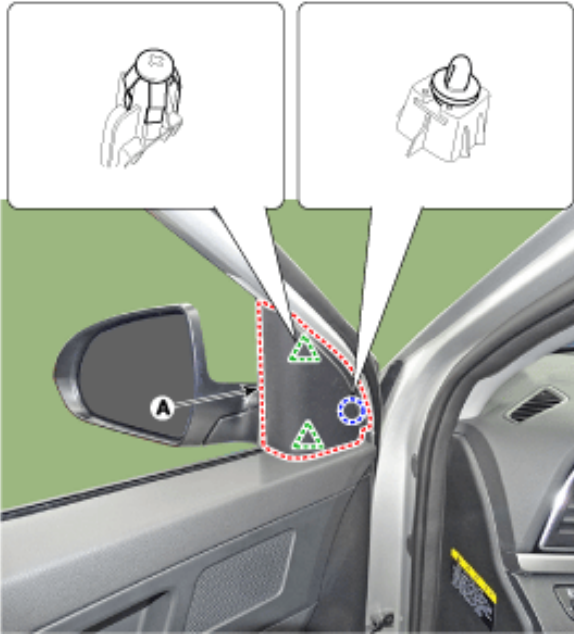
When removing with a flat-tip screwdriver or remover, wrap protective tape around the tools to prevent damage to components. Be careful not to scratch the door trim and other parts.



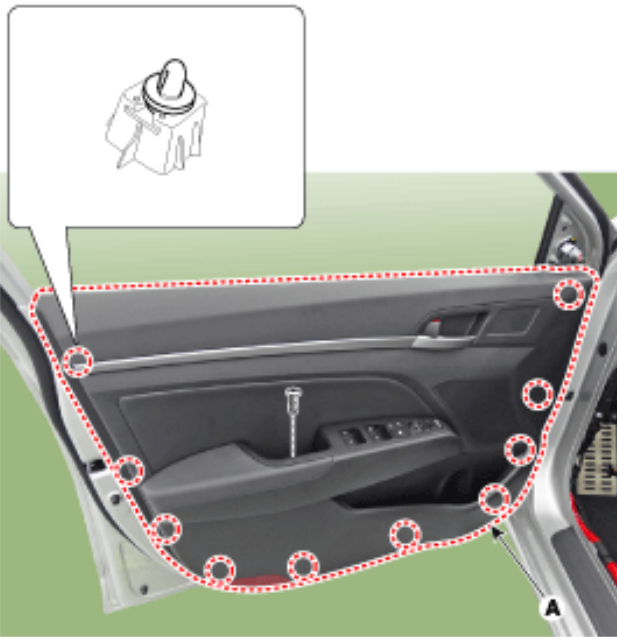
- When removing with a flat-tip screwdriver or remover, wrap protective tape around the tools to prevent damage to components.

- Be careful not to scratch the door trim and other parts.

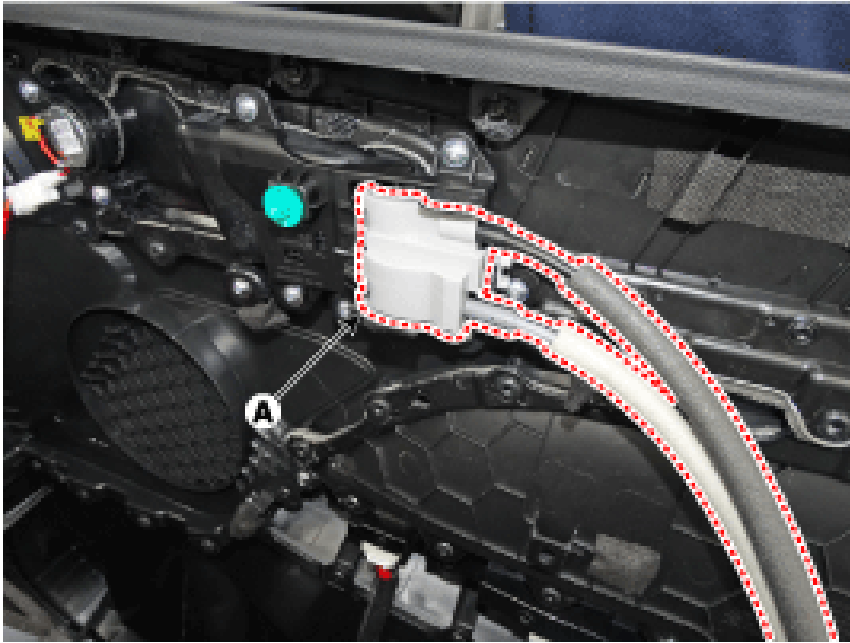
- Using a screwdriver or remover, remove the front door quadrant inner cover (A).



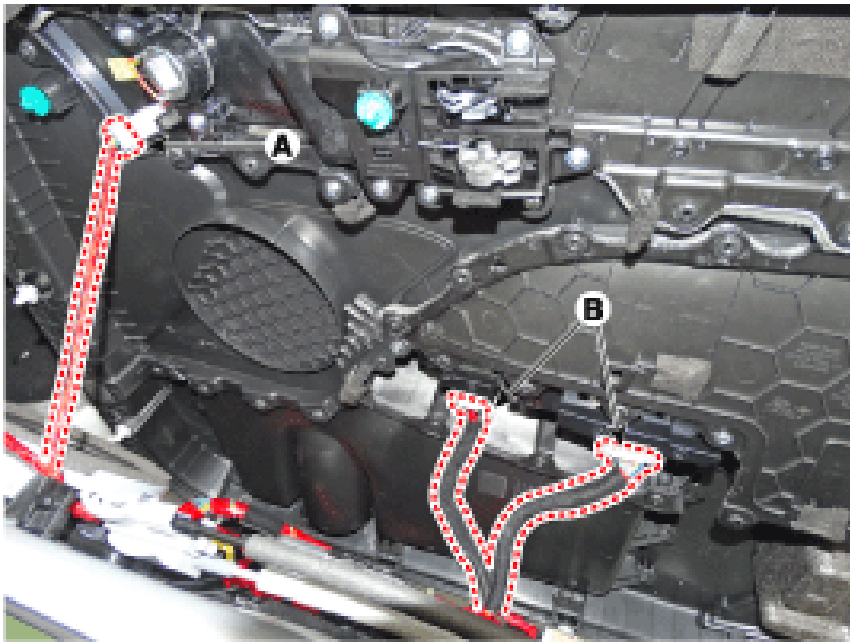
- After loosening the mounting screws, remove the lower part of the front door trim (A) using a flat-tip screwdriver.



- Remove the front door inside handle cage (A).



- Disconnect the front door lamp connector (A) and power window switch connector (B).



- To install, reverse the removal procedure. Make sure the connector is connected properly. Make sure the door locks / unlocks and opens / closes properly. Replace any damaged clips (or pin-type retainers). Make sure the glass is operated properly.

Make sure the connector is connected properly. Make sure the door locks / unlocks and opens / closes properly. Replace any damaged clips (or pin-type retainers). Make sure the glass is operated properly.



# Information

- Make sure the connector is connected properly.
- Make sure the door locks / unlocks and opens / closes properly.

- Replace any damaged clips (or pin-type retainers).
- Make sure the glass is operated properly.