

Component Procedures: Thermostat Housing

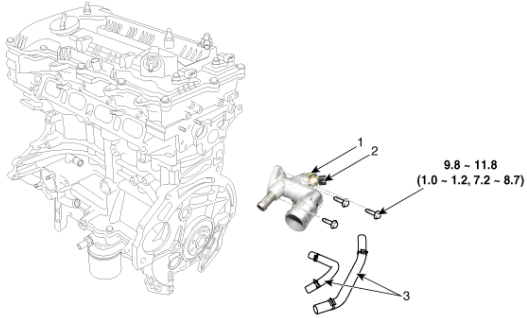
Table of Contents

1. Water Temperature Control Assembly - Components and Components Location (Article 45370)
2. Water Temperature Control Assembly - Repair Procedures (Article 45371)

Component Procedures: Thermostat Housing

Water Temperature Control Assembly - Components and Components Location (Article 45370)

- Components

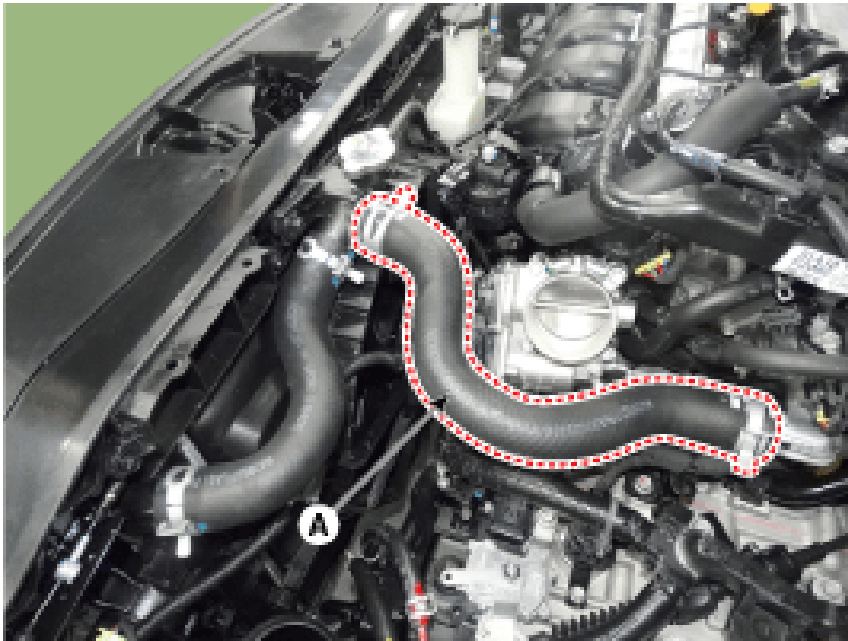


Tightening torque : N.m (kgf.m, lb-ft)

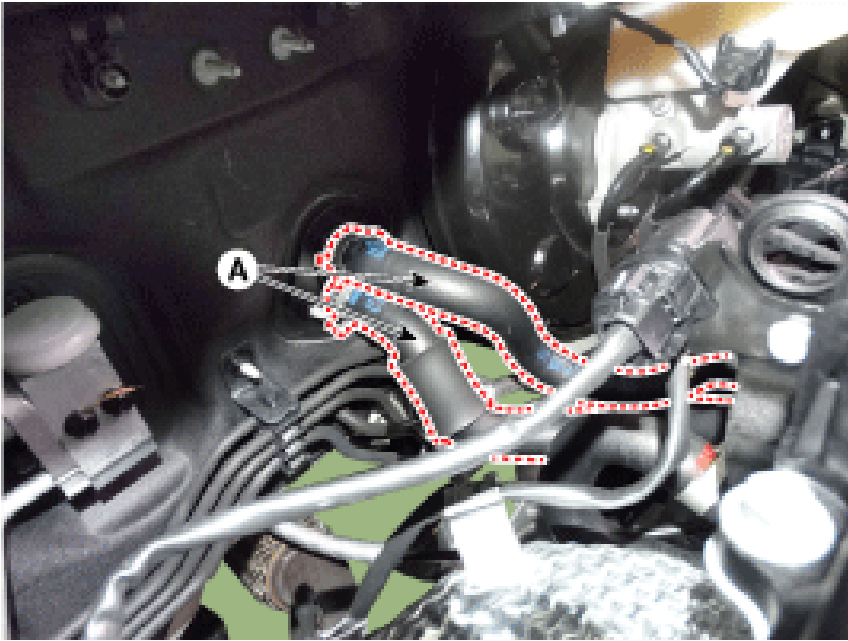
1. Water temperature control assembly 2. Engine coolant temperature sensor 3. Throttle body coolant hose (if equipped)

Water Temperature Control Assembly - Repair Procedures (Article 45371)

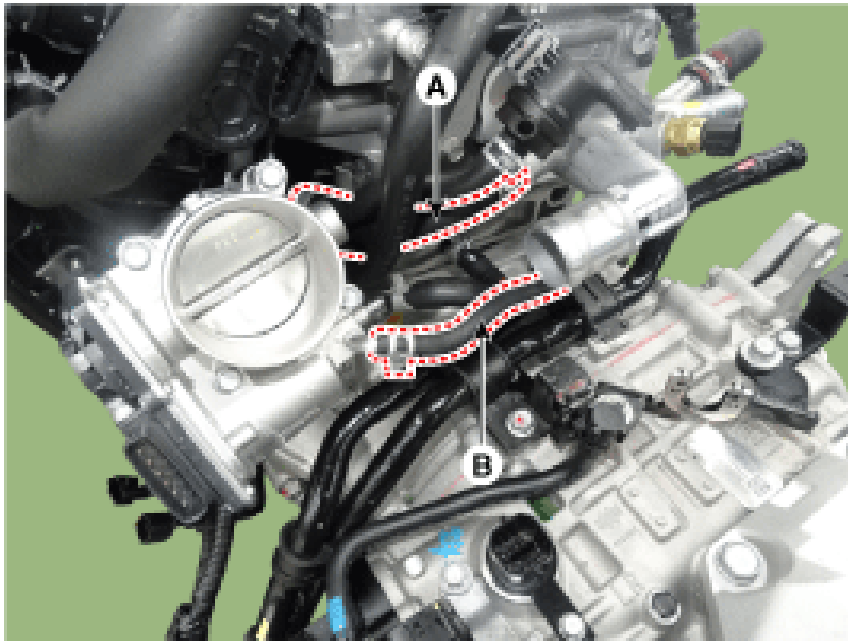
- Removal and Installation
- Remove the engine cover . (Refer to Engine and Transaxle Assembly - "Engine Cover")
- Drain the engine coolant so its level is below water temperature control assembly. (Refer to Cooling System - "Coolant")
- Remove the air duct and air cleaner assembly . (Refer to Intake and Exhaust System - "Air Cleaner")
- Disconnect the radiator upper hose (A).



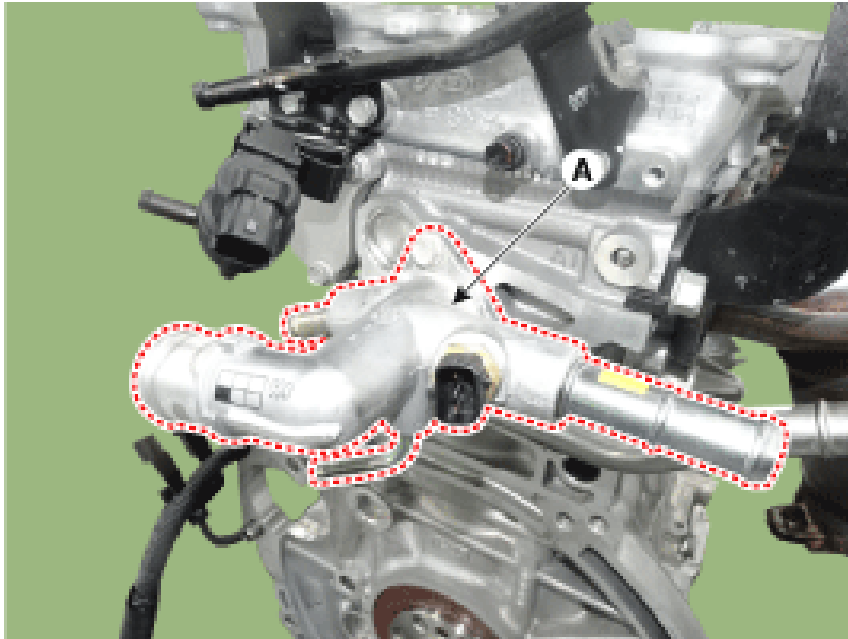
- Disconnect the heater hose s (A).



- Disconnect the bypass hose (A) and the throttle body coolant hose (B) (if equipped).



- Remove the water temperature control assembly (A) with the O-ring . Tightening torque: 9.8 - 11.8 N.m (1.0 - 1.2 kgf.m, 7.2 - 8.7 lb-ft) Install a new O-ring. Clean surface on the O-ring and install the O-ring after wetting with water.



Install a new O-ring. Clean surface on the O-ring and install the O-ring after wetting with water.

NOTICE

- Install a new O-ring.
- Clean surface on the O-ring and install the O-ring after wetting with water.
- Install in the reverse order of removal.
- Fill the engine coolant. (Refer to Cooling System - "Coolant")
- Start engine and check for leaks.